

Product datasheet for TP305473M

RASA1 (NM_002890) Human Recombinant Protein

Product data:

Product Type:	Recombinant Proteins
Description:	Recombinant protein of human RAS p21 protein activator (GTPase activating protein) 1 (RASA1), transcript variant 1, 100 µg
Species:	Human
Expression Host:	HEK293T
Expression cDNA Clone or AA Sequence:	>RC205473 protein sequence Red=Cloning site Green=Tags(s)

MMAAEAGSEEGGPVTAGAGGGGAAAGSSAYPAVCRVKIPAALPVAAPYPGLVETGVAGTLGGGAALGSE
FLGAGSVAGALGGAGLTGGGTAAGVAGAAAAGVAGAAVAGPSGDMALTKLPTSLLAETLPGGGFPPLPPP
PYLPPLGAGLGTVDEGDSLDPGEYEEEEVAIPLTAPPTNQWYHGKLDRTIAEERLRQAGKSGSYLIRES
RRPGSFVLSFLSQMNWNHFRIIAMCGDYIIGRRFSSLSDLIGYSHVSCLLKGEKLLYPVAPPEPVED
RRRVRAILPYTKVPDDEISFLKGD MFIVHNELEDGMMWVTNLRTDEQGLIVEDLVEEVGREEDPHEGKI
WFHGKISKQEAYNLLMTVGVQVCSFLVRPSDNTPGDYSLYFRTNENIQRFKICPTPNNQFMMGGRYNSIG
DIIDHYRKEQIVEGYLKEPVPMDQEQVLNDTVDGKEIYNTIRRTKDAFYKNIVKKGYLLKKGKGRW
KNLYFILEGSDAQLIYFESEKRATKPKGLIDLVSVCVYVHDSLFRPNCFQIWWQHFSEEHYIFYFAGE
TPEQAEDWMKGLQAFCNLRKSSPGTSNKRLRQVSSLVHLHIEEAHKLPVKHFTNPYCNILNSVQVAKTHA
REGQNPVWSEEFVFDLPPDINRFEITLSNKT KSKDPDILFMRCQLSRLQKGHATDEWFLSSHIPLKG
IEPGLRVRARYSMEKIMPEEEYSEFKELILQKELHVYALSHVCGQDRLLASILLRIFLHEKLESLLL
CTLNDREISMEDEATTLFRATTLASTLMEQYMKATATQFVHHALKDSILKIMESKQSCELSPSKLEKNE
VNTNLTHLLNISELVEKIFMASEILPPTLRYYIGCLQKSVQHKWPTNTTMRTRVWVSGFVFLRLICPAIL
NPRMFNIISDPSPIAARTLILVAKSVQNLANLVEFGAKEPYMEGVNPFIKSNKHRMIMFLDELGNVPEL
PDTTEHSRTDLSRDLAALHEICVAHSDELRTLSNERGAQQHVLKLLAITELLQQKQNYTKTNDVR

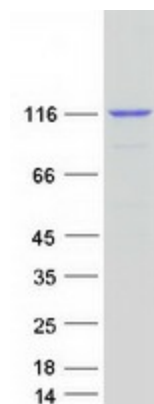
SGPTRTRPLEQKLISEEDLAANDILDYKDDDDKV

Tag:	C-Myc/DDK
Predicted MW:	116.2 kDa
Concentration:	>0.05 µg/µL as determined by microplate BCA method
Purity:	> 80% as determined by SDS-PAGE and Coomassie blue staining
Buffer:	25 mM Tris-HCl, 100 mM glycine, pH 7.3, 10% glycerol



[View online »](#)

Preparation:	Recombinant protein was captured through anti-DDK affinity column followed by conventional chromatography steps.
Note:	For testing in cell culture applications, please filter before use. Note that you may experience some loss of protein during the filtration process.
Storage:	Store at -80°C.
Stability:	Stable for 12 months from the date of receipt of the product under proper storage and handling conditions. Avoid repeated freeze-thaw cycles.
RefSeq:	NP_002881
Locus ID:	5921
UniProt ID:	P20936 , Q59GK3
RefSeq Size:	4402
Cytogenetics:	5q14.3
RefSeq ORF:	3141
Synonyms:	CM-AVM; CMAVM; CMAVM1; GAP; p120; p120GAP; p120RASGAP; PKWS; RASA; RASGAP
Summary:	<p>The protein encoded by this gene is located in the cytoplasm and is part of the GAP1 family of GTPase-activating proteins. The gene product stimulates the GTPase activity of normal RAS p21 but not its oncogenic counterpart. Acting as a suppressor of RAS function, the protein enhances the weak intrinsic GTPase activity of RAS proteins resulting in the inactive GDP-bound form of RAS, thereby allowing control of cellular proliferation and differentiation. Mutations leading to changes in the binding sites of either protein are associated with basal cell carcinomas. Mutations also have been associated with hereditary capillary malformations (CM) with or without arteriovenous malformations (AVM) and Parkes Weber syndrome. Alternative splicing results in two isoforms where the shorter isoform, lacking the N-terminal hydrophobic region but retaining the same activity, appears to be abundantly expressed in placental but not adult tissues. [provided by RefSeq, May 2012]</p>
Protein Families:	Druggable Genome
Protein Pathways:	Axon guidance, MAPK signaling pathway

Product images:

Coomassie blue staining of purified RASA1 protein (Cat# [TP305473]). The protein was produced from HEK293T cells transfected with RASA1 cDNA clone (Cat# [RC205473]) using MegaTran 2.0 (Cat# [TT210002]).