

Product datasheet for **TP304083**

SMOC1 (NM_001034852) Human Recombinant Protein

Product data:

Product Type:	Recombinant Proteins
Description:	Recombinant protein of human SPARC related modular calcium binding 1 (SMOC1), transcript variant 1, 20 µg
Species:	Human
Expression Host:	HEK293T
Expression cDNA Clone or AA Sequence:	>RC204083 protein sequence Red =Cloning site Green =Tags(s)

MLPARCARLLTPHLLLVQLSPARGHRTTGPRFLISDRDPQCNLHCSRTQPKPICASDGRSYESMCEYQ
RAKCRDPTLGVVHRGRCKDAGQSKCLERAQALEQAKKPQEAQVFPCEGEGDSFTQVQCHTYTGYCWCVT
PDGKPISSVQNKTPVCSGSVTDKPLSQGNSGRKDDGSKPTPTMETQPVFDGDEITAPTLWKHLVIKD
SKLNNTNIRNSEKVVYSCDQERQSALEEAQQNPREGIWIPECAPGGLYKPVQCHQSTGYCWCVLVDTGRPL
PGTSTRYVMPSCESDARAKTTEADDPFKDRELPGCPEGKKMEFITSLLDALTTDMVQAINSAAPTGGGRF
SEPDPSHTLEERVVHWYFSQLDSNSSNDINKREMKPKFKRYVKKKAKPKKCARRFTDYCDLNKDKVISLPE
LKGCLGVSKEVGRLV

TRTRPLEQKLISEEDLAANDILDYKDDDDKV

Tag:	C-Myc/DDK
Predicted MW:	48.1 kDa
Concentration:	>0.05 µg/µL as determined by microplate BCA method
Purity:	> 80% as determined by SDS-PAGE and Coomassie blue staining
Buffer:	25 mM Tris-HCl, 100 mM glycine, pH 7.3, 10% glycerol
Preparation:	Recombinant protein was captured through anti-DDK affinity column followed by conventional chromatography steps.
Note:	For testing in cell culture applications, please filter before use. Note that you may experience some loss of protein during the filtration process.
Storage:	Store at -80°C.
Stability:	Stable for 12 months from the date of receipt of the product under proper storage and handling conditions. Avoid repeated freeze-thaw cycles.



[View online »](#)

RefSeq: [NP_001030024](#)

Locus ID: 64093

UniProt ID: [Q9H4F8](#)

RefSeq Size: 3716

Cytogenetics: 14q24.2

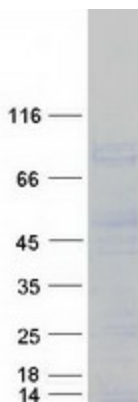
RefSeq ORF: 1305

Synonyms: OAS

Summary: This gene encodes a multi-domain secreted protein that may have a critical role in ocular and limb development. Mutations in this gene are associated with microphthalmia and limb anomalies. Alternatively spliced transcript variants encoding different isoforms have been found for this gene. [provided by RefSeq, Mar 2011]

Protein Families: Secreted Protein

Product images:



Coomassie blue staining of purified SMOC1 protein (Cat# TP304083). The protein was produced from HEK293T cells transfected with SMOC1 cDNA clone (Cat# [RC204083]) using MegaTran 2.0 (Cat# [TT210002]).