

## Product datasheet for TP304037

### TLE 1 (TLE1) (NM\_005077) Human Recombinant Protein

#### Product data:

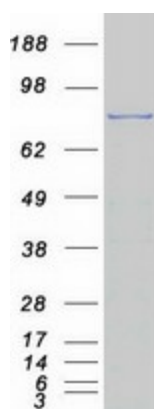
<b>Product Type:</b>	Recombinant Proteins
<b>Description:</b>	Recombinant protein of human transducin-like enhancer of split 1 (E(sp1) homolog, Drosophila) (TLE1), 20 µg
<b>Species:</b>	Human
<b>Expression Host:</b>	HEK293T
<b>Expression cDNA Clone or AA Sequence:</b>	>RC204037 protein sequence <b>Red</b> =Cloning site <b>Green</b> =Tags(s)
	<p>MFPQSRHPTPHQAAGQPFFKFTIPESLDRIKEEFQLQAQYHSLKLECEKLASEKTEMQRHYVMYYEMSYG  LNIEMHKQTEIAKRLNTICAQVIPFLSQEHQQQVAQAVERAKQVTMAELNAIIGQQQLQAQHLSHGHGPP  VPLTPHPSGLQPPGIPPLGGSAGLLALSSALSGQSHLAIKDDKKHHDAAEHHRDREPGTNSLLVPDSLGRG  TDKRRNGPEFSNDIKKRKVDDKSSHYSDGDKSDNLLVDVSNEDPSSPRASPAHSPRENGIDKNRLLK  KDASSSPASTASSASSTSLKSKEMSLHEKASTPVLKSSSTPTPRSDMPTPGTSATPGLRPLGLGKPPAIDPL  VNQAAAGLRTPLAVPGYPAPFGMVPHAGMNGELTSPGAAYASLHNMSPPQMSAAAAAAVAVYGRSPMVG  FDPPPMMRVPTIPPNLGIPGGKPAYSFHVTADGQMQPVPFPDALIGPGIPRHRQINTLNHGVEVCAV  TISNPTRHVYTTGGKGCVKVWDISHPGNKSPVSQLDCLNRDNYIRSKLLPDGCTLIVGGEASTLSIWDLA  APTPRIKAELTSSAPACYALAIKSPDSKVCFCSSDGNIAVWDLHNQTLVRQFQGHDTGASCIDISNDGK  LWTGGLDNTVRSWDLREGRQLQHDFTSQIFSLGYCPTGEWLAVGMESSNVEVLHVNKPKDKYQLHLHESC  VLSLKFAYCGKWFVSTGKDNLLNAWRTPYGASIFQSKESSVLSCDISVDDKYIVTGSGDKKATVYEVY</p> <p><b>TRTRPLEQKLISEEDLAANDILDYKDDDDKV</b></p>
<b>Tag:</b>	C-Myc/DDK
<b>Predicted MW:</b>	83 kDa
<b>Concentration:</b>	>0.05 µg/µL as determined by microplate BCA method
<b>Purity:</b>	> 80% as determined by SDS-PAGE and Coomassie blue staining
<b>Buffer:</b>	25 mM Tris-HCl, 100 mM glycine, pH 7.3, 10% glycerol
<b>Preparation:</b>	Recombinant protein was captured through anti-DDK affinity column followed by conventional chromatography steps.
<b>Note:</b>	For testing in cell culture applications, please filter before use. Note that you may experience some loss of protein during the filtration process.



[View online »](#)

<b>Storage:</b>	Store at -80°C.
<b>Stability:</b>	Stable for 12 months from the date of receipt of the product under proper storage and handling conditions. Avoid repeated freeze-thaw cycles.
<b>RefSeq:</b>	<a href="#">NP_005068</a>
<b>Locus ID:</b>	7088
<b>UniProt ID:</b>	<a href="#">Q04724</a> , <a href="#">Q59EF7</a>
<b>RefSeq Size:</b>	3283
<b>Cytogenetics:</b>	9q21.32
<b>RefSeq ORF:</b>	2310
<b>Synonyms:</b>	ESG; ESG1; GRG1
<b>Summary:</b>	Transcriptional corepressor that binds to a number of transcription factors. Inhibits NF-kappa-B-regulated gene expression. Inhibits the transcriptional activation mediated by FOXA2, and by CTNNB1 and TCF family members in Wnt signaling. The effects of full-length TLE family members may be modulated by association with dominant-negative AES. Unusual function as coactivator for ESRRG.[UniProtKB/Swiss-Prot Function]
<b>Protein Families:</b>	Transcription Factors

### Product images:



Coomassie blue staining of purified TLE1 protein (Cat# TP304037). The protein was produced from HEK293T cells transfected with TLE1 cDNA clone (Cat# [RC204037]) using MegaTran 2.0 (Cat# [TT210002]).