

## Product datasheet for TP303769

### CHI3L1 (NM\_001276) Human Recombinant Protein

#### Product data:

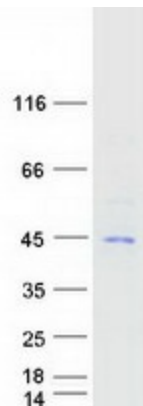
Product Type:	Recombinant Proteins
Description:	Recombinant protein of human chitinase 3-like 1 (cartilage glycoprotein-39) (CHI3L1), 20 µg
Species:	Human
Expression Host:	HEK293T
Expression cDNA Clone or AA Sequence:	>RC203769 protein sequence <b>Red</b> =Cloning site <b>Green</b> =Tags(s)
	<p>MGVKASQTGFVVLVLLQCCSAYKLVVCYYTWSWSQYREGDGSCFPDALDRFLCTHIIYSFANISNDHIDTWE WNDVTLYGMLNTLKNRNPNLKTLTLLSVGGWNFGSQRFSKIASNTQSRRTFIKSVPPFLRTHGFDGLDLAWL YPGRRDKQHFTTLIKEMKAEFIKEAQP GKKQLLLSAALSAGKVTIDSSYDIAKISQHLDFISIMTYDFHG AWRGTTGHHSPFRGQEDASPDFSNTDYAVGYMLRLGAPASKLVMGIPTFGRSFTLASSETGVGAPISG PGIPGRFTKEAGTLAYYEICDFLRGATVHRILGQQVPYATKGNQWVGYYDDQESVSKVQYLKDRQLAGAM VWALDLDDFQGSFCGQDLRFPLTNAIKDALAAT</p> <p><b>TRTRPLEQKLISEEDLAANDILDYKDDDDKV</b></p>
Tag:	C-Myc/DDK
Predicted MW:	42.4 kDa
Concentration:	>0.05 µg/µL as determined by microplate BCA method
Purity:	> 80% as determined by SDS-PAGE and Coomassie blue staining
Buffer:	25 mM Tris-HCl, 100 mM glycine, pH 7.3, 10% glycerol
Bioactivity:	Binding assay (PMID: <a href="#">25688078</a> )
Preparation:	Recombinant protein was captured through anti-DDK affinity column followed by conventional chromatography steps.
Note:	For testing in cell culture applications, please filter before use. Note that you may experience some loss of protein during the filtration process.
Storage:	Store at -80°C.
Stability:	Stable for 12 months from the date of receipt of the product under proper storage and handling conditions. Avoid repeated freeze-thaw cycles.
RefSeq:	<a href="#">NP_001267</a>



[View online »](#)

Locus ID:	1116
UniProt ID:	<a href="#">P36222</a> , <a href="#">A0A024R969</a>
RefSeq Size:	1867
Cytogenetics:	1q32.1
RefSeq ORF:	1149
Synonyms:	ASRT7; CGP-39; GP-39; GP39; HC-gp39; HCGP-3P; hCGP-39; YK-40; YKL-40; YKL40; YYL-40
Summary:	Chitinases catalyze the hydrolysis of chitin, which is an abundant glycopolymer found in insect exoskeletons and fungal cell walls. The glycoside hydrolase 18 family of chitinases includes eight human family members. This gene encodes a glycoprotein member of the glycosyl hydrolase 18 family. The protein lacks chitinase activity and is secreted by activated macrophages, chondrocytes, neutrophils and synovial cells. The protein is thought to play a role in the process of inflammation and tissue remodeling. [provided by RefSeq, Sep 2009]
Protein Families:	Secreted Protein

### Product images:



Coomassie blue staining of purified CHI3L1 protein (Cat# TP303769). The protein was produced from HEK293T cells transfected with CHI3L1 cDNA clone (Cat# [RC203769]) using MegaTran 2.0 (Cat# [TT210002]).