

## Product datasheet for **TP302399**

### SSH3 (NM\_017857) Human Recombinant Protein

#### Product data:

Product Type:	Recombinant Proteins
Description:	Recombinant protein of human slingshot homolog 3 (Drosophila) (SSH3), 20 µg
Species:	Human
Expression Host:	HEK293T
Expression cDNA	>RC202399 protein sequence
Clone or AA Sequence:	Red=Cloning site Green=Tags(s)

MALVTVSRSPPGSGASTPVGPWDQAVQRRSRLQRRQSFVAVLRGAVLGLQDGGDNDDAAEASSEPTKAPS  
EEELHGDQTDGFGQGSQPQKQEEQRQHLLHLMVQLLRPQDDIRLAAQLEAPRPPRLRYLLVSTREGEGLS  
QDETVLLGVDFPDSSSPSCTLGLVLPWSDTQVYLDGDDGGFSVTSGGQSRIFKPISIQTMWATLQVLHQA  
CEAALGSGSLVPGGSALTWASHYQERLNSEQSCLNEWAMADLESLRPPSAEPGGSSESEQMEQAIRAELW  
KVLVDVSDLESVTSKEIRQAELRLGLPLQYRDFIDNQMLLLVAQRDRASRIFPHLYLGSEWNAANLEEL  
QRNRVTHILNMAREIDNFYPERFTYHNVRLWDEESAQLLPHWKETHRFIEAARAQGTHVLVHCKMGVSRS  
AATVLAYAMKQYECQSLEQALRHVQELRPIARPNGFLRQLQIYQGILTASRQSHVWEQKVGGSPEEHPA  
PEVSTPFPLPPEPEGGEGEEKVVGMEESQAAPKEEPGPRPRINLRGVMRSISLLEPSLELESTSETSDMP  
EVFSSHESSHEEPLQFPFQLARTKGGQQVDRGPQPALKSRQSVVTLQGSAAVANRTQAFQEQQEQGGQGGQ  
GEPICISSTPRFRKVVQRASVHDSGEEGEA

TRTRPLEQKLISEEDLAANDILDYKDDDDKV

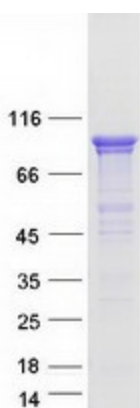
Tag:	C-Myc/DDK
Predicted MW:	72.8 kDa
Concentration:	>0.05 µg/µL as determined by microplate BCA method
Purity:	> 80% as determined by SDS-PAGE and Coomassie blue staining
Buffer:	25 mM Tris-HCl, 100 mM glycine, pH 7.3, 10% glycerol
Preparation:	Recombinant protein was captured through anti-DDK affinity column followed by conventional chromatography steps.
Note:	For testing in cell culture applications, please filter before use. Note that you may experience some loss of protein during the filtration process.
Storage:	Store at -80°C.



[View online »](#)

<b>Stability:</b>	Stable for 12 months from the date of receipt of the product under proper storage and handling conditions. Avoid repeated freeze-thaw cycles.
<b>RefSeq:</b>	<a href="#">NP_060327</a>
<b>Locus ID:</b>	54961
<b>UniProt ID:</b>	<a href="#">Q8TE77</a> , <a href="#">A0A024R5J4</a>
<b>RefSeq Size:</b>	2894
<b>Cytogenetics:</b>	11q13.2
<b>RefSeq ORF:</b>	1977
<b>Synonyms:</b>	SSH3L
<b>Summary:</b>	The ADF (actin-depolymerizing factor)/cofilin family (see MIM 601442) is composed of stimulus-responsive mediators of actin dynamics. ADF/cofilin proteins are inactivated by kinases such as LIM domain kinase-1 (LIMK1; MIM 601329). The SSH family appears to play a role in actin dynamics by reactivating ADF/cofilin proteins in vivo (Niwa et al., 2002 [PubMed 11832213]). [supplied by OMIM, Mar 2008]
<b>Protein Families:</b>	Druggable Genome, Phosphatase
<b>Protein Pathways:</b>	Regulation of actin cytoskeleton

### Product images:



Coomassie blue staining of purified SSH3 protein (Cat# TP302399). The protein was produced from HEK293T cells transfected with SSH3 cDNA clone (Cat# [RC202399]) using MegaTran 2.0 (Cat# [TT210002]).