

Product datasheet for **TP302079M**

IL1 beta (IL1B) (NM_000576) Human Recombinant Protein

Product data:

Product Type: Recombinant Proteins

Description: Recombinant protein of human interleukin 1, beta (IL1B), 100 µg

Species: Human

Expression Host: HEK293T

**Expression cDNA Clone
or AA Sequence:** >RC202079 protein sequence
Red=Cloning site **Green**=Tags(s)

MAEVP ELASEMMAYYS GNEDDLFFEADGPKQMKCSFQDL DLCPLDGGIQLRISDHHYSGFRQAASVVA
MDKLRKMLVPCPQTFQENDLSTFFPFIFEEPIFFDTWDNEAYVHDAPVRS LNCTLRDSQQKSLVMSGPY
ELKALHLQGQDMEQQVFSMSFVQGEESNDKIPVALGLKEKNLYLSCVLKDDKPTLQLESVDPKNYPKKK
MEKRFVFNKIEINNKLEFESAQFPNWIYSTSQAENMPVFLGGTKGGQDITDFTMQFVSS

TRTRPLEQKLISEEDLAANDILDYKDDDDKV

Tag: C-Myc/DDK

Predicted MW: 30.6 kDa

Concentration: >0.05 µg/µL as determined by microplate BCA method

Purity: > 80% as determined by SDS-PAGE and Coomassie blue staining

Buffer: 25 mM Tris-HCl, 100 mM glycine, pH 7.3, 10% glycerol

Preparation: Recombinant protein was captured through anti-DDK affinity column followed by conventional chromatography steps.

Note: For testing in cell culture applications, please filter before use. Note that you may experience some loss of protein during the filtration process.

Storage: Store at -80°C.

Stability: Stable for 12 months from the date of receipt of the product under proper storage and handling conditions. Avoid repeated freeze-thaw cycles.

RefSeq: [NP_000567](#)

Locus ID: 3553

UniProt ID: [P01584](#)



[View online >](#)

RefSeq Size: 1498

Cytogenetics: 2q14.1

RefSeq ORF: 807

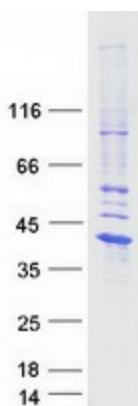
Synonyms: IL-1; IL1-BETA; IL1beta; IL1F2

Summary: The protein encoded by this gene is a member of the interleukin 1 cytokine family. This cytokine is produced by activated macrophages as a proprotein, which is proteolytically processed to its active form by caspase 1 (CASP1/ICE). This cytokine is an important mediator of the inflammatory response, and is involved in a variety of cellular activities, including cell proliferation, differentiation, and apoptosis. The induction of cyclooxygenase-2 (PTGS2/COX2) by this cytokine in the central nervous system (CNS) is found to contribute to inflammatory pain hypersensitivity. Similarly, IL-1B has been implicated in human osteoarthritis pathogenesis. Patients with severe Coronavirus Disease 2019 (COVID-19) present elevated levels of pro-inflammatory cytokines such as IL-1B in bronchial alveolar lavage fluid samples. The lung damage induced by the Severe acute respiratory syndrome coronavirus 2 (SARS-CoV-2) is to a large extent, a result of the inflammatory response promoted by cytokines such as IL-1B. This gene and eight other interleukin 1 family genes form a cytokine gene cluster on chromosome 2. [provided by RefSeq, Jul 2020]

Protein Families: Druggable Genome, Secreted Protein

Protein Pathways: Alzheimer's disease, Apoptosis, Cytokine-cytokine receptor interaction, Cytosolic DNA-sensing pathway, Graft-versus-host disease, Hematopoietic cell lineage, MAPK signaling pathway, NOD-like receptor signaling pathway, Prion diseases, Toll-like receptor signaling pathway, Type I diabetes mellitus

Product images:



Coomassie blue staining of purified IL1B protein (Cat# [TP302079]). The protein was produced from HEK293T cells transfected with IL1B cDNA clone (Cat# [RC202079]) using MegaTran 2.0 (Cat# [TT210002]).