

## Product datasheet for **TP301803**

### PGP9.5 (UCHL1) (NM\_004181) Human Recombinant Protein

#### Product data:

**Product Type:** Recombinant Proteins

**Description:** Recombinant protein of human ubiquitin carboxyl-terminal esterase L1 (ubiquitin thiolesterase) (UCHL1), 20 µg

**Species:** Human

**Expression Host:** HEK293T

**Expression cDNA Clone or AA Sequence:** >RC201803 protein sequence  
**Red**=Cloning site **Green**=Tags(s)

MQLKPMEINPEMLNKVLSRLGVAGQWRFVDVLGLEEESLGSPAPACALLLFPPLTAQHENFRKKQIEEL  
KGQEVSPKVYFMKQTIGNSCGTIGLIHAVANNQDKLGFEDGSVLKQFLSETEKMSPEDRAKCFEKNEAIQ  
AAHDAVAQEGQCRVDDKVNFFHILFNNVDGHLIELDGRMPFPVNHGASSEDLLKDAAKVCREFTEREQ  
EVRFSAVALCKAA

**TRTRPLEQKLISEEDLAANDILDYKDDDDKV**

**Tag:** C-Myc/DDK

**Predicted MW:** 24.6 kDa

**Concentration:** >0.1 µg/µL as determined by microplate BCA method

**Purity:** > 80% as determined by SDS-PAGE and Coomassie blue staining

**Buffer:** 25 mM Tris-HCl, 100 mM glycine, pH 7.3, 10% glycerol

**Preparation:** Recombinant protein was captured through anti-DDK affinity column followed by conventional chromatography steps.

**Note:** For testing in cell culture applications, please filter before use. Note that you may experience some loss of protein during the filtration process.

**Storage:** Store at -80°C.

**Stability:** Stable for 12 months from the date of receipt of the product under proper storage and handling conditions. Avoid repeated freeze-thaw cycles.

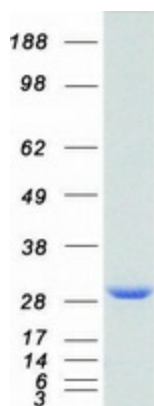
**RefSeq:** [NP\\_004172](#)

**Locus ID:** 7345



[View online »](#)

UniProt ID:	<a href="#">P09936</a> , <a href="#">V9HW74</a>
RefSeq Size:	1141
Cytogenetics:	4p13
RefSeq ORF:	669
Synonyms:	HEL-117; HEL-S-53; NDGOA; PARK5; PGP 9.5; PGP9.5; PGP95; SPG79; Uch-L1
Summary:	The protein encoded by this gene belongs to the peptidase C12 family. This enzyme is a thiol protease that hydrolyzes a peptide bond at the C-terminal glycine of ubiquitin. This gene is specifically expressed in the neurons and in cells of the diffuse neuroendocrine system. Mutations in this gene may be associated with Parkinson disease.[provided by RefSeq, Sep 2009]
Protein Families:	Druggable Genome, Protease
Protein Pathways:	Parkinson's disease

**Product images:**

Coomassie blue staining of purified UCHL1 protein (Cat# TP301803). The protein was produced from HEK293T cells transfected with UCHL1 cDNA clone (Cat# [RC201803]) using MegaTran 2.0 (Cat# [TT210002]).