

## Product datasheet for **TP301486**

### ERLEC1 (NM\_015701) Human Recombinant Protein

#### Product data:

Product Type:	Recombinant Proteins
Description:	Recombinant protein of human chromosome 2 open reading frame 30 (C2orf30), transcript variant 1, 20 µg
Species:	Human
Expression Host:	HEK293T
Expression cDNA Clone or AA Sequence:	>RC201486 protein sequence <b>Red</b> =Cloning site <b>Green</b> =Tags(s)
	<p>MEEGGGGVRSVLPGGPVLLVLCGLLEASGGGRALPQLSDDIPFRVNWPGTTEFLPTTGVLTKEDNYVIMT TAHKEKYKCILPLVTSGDEEEKDYKGNPRELLEPLFKQSSCSYRIESYWTYEVCHGKHIRQYHEEKET GQKINIHEYLGMLAKNLLFEKEREAEKEKSNEIPTKNIQEQMTPYYPVGMGNGTPCSLKQNRPRSST VMYICHPEKHEILSVAEVTTCYEVWILTPLLCSHPKYRFRASPVNDIFCQSLPGSPFKPLTLRQLEQQ EEILRVPFRRNKEEDLQSTKEERFPPIHKSIAIGSQPVLTVGTTTHISKLTDQLIKEFLSGSYCFRGGVG WWKYEFYCYGKHVHQYHEDKDSGKTSVVVGTWNQEEHIEWAKKNTARAYHLQDDGTQTVRMVSHFYGNQDI CDITDKPRQVTVKLKCKESDSPHAVTVYMLEPHSCQYILGVESPVICKILTADENGLLSLPN</p> <p><b>TRTRPLEQKLISEEDLAANDILDYKDDDDKV</b></p>
Tag:	C-Myc/DDK
Predicted MW:	54.7 kDa
Concentration:	>0.05 µg/µL as determined by microplate BCA method
Purity:	> 80% as determined by SDS-PAGE and Coomassie blue staining
Buffer:	25 mM Tris-HCl, 100 mM glycine, pH 7.3, 10% glycerol
Preparation:	Recombinant protein was captured through anti-DDK affinity column followed by conventional chromatography steps.
Note:	For testing in cell culture applications, please filter before use. Note that you may experience some loss of protein during the filtration process.
Storage:	Store at -80°C.
Stability:	Stable for 12 months from the date of receipt of the product under proper storage and handling conditions. Avoid repeated freeze-thaw cycles.



[View online »](#)

RefSeq: [NP\\_056516](#)

Locus ID: 27248

UniProt ID: [Q96DZ1](#), [V9HWD3](#)

RefSeq Size: 2605

Cytogenetics: 2p16.2

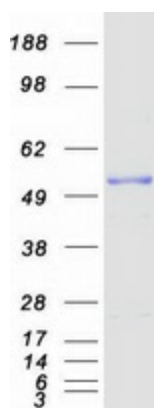
RefSeq ORF: 1449

Synonyms: C2orf30; CIM; CL24936; CL25084; HEL117; XTP3-B; XTP3TPB

**Summary:** This gene encodes a resident endoplasmic reticulum (ER) protein that functions in N-glycan recognition. This protein is thought to be involved in ER-associated degradation via its interaction with the membrane-associated ubiquitin ligase complex. It also functions as a regulator of multiple cellular stress-response pathways in a manner that promotes metastatic cell survival. Alternative splicing results in multiple transcript variants. A related pseudogene has been identified on chromosome 21. [provided by RefSeq, Aug 2011]

**Protein Families:** Secreted Protein

### Product images:



Coomassie blue staining of purified ERLEC1 protein (Cat# TP301486). The protein was produced from HEK293T cells transfected with ERLEC1 cDNA clone (Cat# [RC201486]) using MegaTran 2.0 (Cat# [TT210002]).