

Product datasheet for **TP301372L**

MYL12B (NM_033546) Human Recombinant Protein

Product data:

Product Type: Recombinant Proteins

Description: Recombinant protein of human myosin, light chain 12B, regulatory (MYL12B), transcript variant 2, 1 mg

Species: Human

Expression Host: HEK293T

Expression cDNA Clone or AA Sequence: >RC201372 protein sequence
Red=Cloning site **Green**=Tags(s)

MSSKKAKTKTTKKRPQRATSNVFMFDQSQIQEFKEAFNMIDQNRDGFIDKEDLHDMLASLGKNPTDAYL
DAMMNEAPGPINFMTFLTMEGKLNKGTDPEDVIRNAFACFDEEATGTIQEDYLRELLTTMGDRFTDEEVD
ELYREAPIDKKGNFNYIEFTRILKHGAKDKDD

TRTRPLEQKLISEEDLAANDILDYKDDDDKV

Tag: C-Myc/DDK

Predicted MW: 19.6 kDa

Concentration: >0.05 µg/µL as determined by microplate BCA method

Purity: > 80% as determined by SDS-PAGE and Coomassie blue staining

Buffer: 25 mM Tris-HCl, 100 mM glycine, pH 7.3, 10% glycerol

Preparation: Recombinant protein was captured through anti-DDK affinity column followed by conventional chromatography steps.

Note: For testing in cell culture applications, please filter before use. Note that you may experience some loss of protein during the filtration process.

Storage: Store at -80°C.

Stability: Stable for 12 months from the date of receipt of the product under proper storage and handling conditions. Avoid repeated freeze-thaw cycles.

RefSeq: [NP_291024](#)

Locus ID: 103910

UniProt ID: [Q14950](#)



[View online »](#)

RefSeq Size: 1022

Cytogenetics: 18p11.31

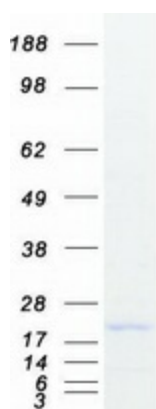
RefSeq ORF: 516

Synonyms: MLC-B; MRLC2

Summary: The activity of nonmuscle myosin II (see MYH9; MIM 160775) is regulated by phosphorylation of a regulatory light chain, such as MRLC2. This phosphorylation results in higher MgATPase activity and the assembly of myosin II filaments (Iwasaki et al., 2001 [PubMed 11942626]). [supplied by OMIM, Mar 2008]

Protein Pathways: Focal adhesion, Leukocyte transendothelial migration, Regulation of actin cytoskeleton, Tight junction

Product images:



Coomassie blue staining of purified MYL12B protein (Cat# [TP301372]). The protein was produced from HEK293T cells transfected with MYL12B cDNA clone (Cat# [RC201372]) using MegaTran 2.0 (Cat# [TT210002]).