

Product datasheet for **TP301242M**

CD20 (MS4A1) (NM_021950) Human Recombinant Protein

Product data:

Product Type:	Recombinant Proteins
Description:	Recombinant protein of human membrane-spanning 4-domains, subfamily A, member 1 (MS4A1), transcript variant 3, 100 µg
Species:	Human
Expression Host:	HEK293T
Expression cDNA Clone or AA Sequence:	>RC201242 protein sequence Red =Cloning site Green =Tags(s)

MTTPRNSVNGTFPAEPMKGPAMQSGPKPLFRRMSSSLVGPTQSFFMRESKTLGAVQIMNGLFHIALGGLL
MIPAGIYAPICVTWYPLWGGIMYIISGSLAATEKNSRKCLVKGMIMNSLSLFAAISGMILSIMDILN
IKISHFLKMESLNFIRAHTPYINIYNCEPANPSEKNSPSTQYCYSIQSLFLGILSVMLIFAFFQELVIAG
IVENEWKRTCSRPKSNIVLLSAEEKKEQTIEIKEEVGLTETSSQPKNEEDIEIPIQEEEEETETNFP
EPPQDQESSPIENDSSP

TRTRPLEQKLISEEDLAANDILDYKDDDDKV

Tag:	C-Myc/DDK
Predicted MW:	32.9 kDa
Concentration:	>0.1 µg/µL as determined by microplate BCA method
Purity:	> 80% as determined by SDS-PAGE and Coomassie blue staining
Buffer:	25 mM Tris-HCl, 100 mM glycine, pH 7.3, 10% glycerol
Preparation:	Recombinant protein was captured through anti-DDK affinity column followed by conventional chromatography steps.
Note:	For testing in cell culture applications, please filter before use. Note that you may experience some loss of protein during the filtration process.
Storage:	Store at -80°C.
Stability:	Stable for 12 months from the date of receipt of the product under proper storage and handling conditions. Avoid repeated freeze-thaw cycles.
RefSeq:	NP_068769
Locus ID:	931



[View online »](#)

UniProt ID: [P11836](#), [A0A024R507](#)

RefSeq Size: 3331

Cytogenetics: 11q12.2

RefSeq ORF: 891

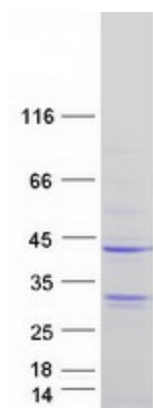
Synonyms: B1; Bp35; CD20; CVID5; FMC7; LEU-16; MS4A2; S7

Summary: This gene encodes a member of the membrane-spanning 4A gene family. Members of this nascent protein family are characterized by common structural features and similar intron/exon splice boundaries and display unique expression patterns among hematopoietic cells and nonlymphoid tissues. This gene encodes a B-lymphocyte surface molecule which plays a role in the development and differentiation of B-cells into plasma cells. This family member is localized to 11q12, among a cluster of family members. Alternative splicing of this gene results in two transcript variants which encode the same protein. [provided by RefSeq, Jul 2008]

Protein Families: Druggable Genome, Transmembrane

Protein Pathways: Hematopoietic cell lineage

Product images:



Coomassie blue staining of purified MS4A1 protein (Cat# [TP301242]). The protein was produced from HEK293T cells transfected with MS4A1 cDNA clone (Cat# [RC201242]) using MegaTran 2.0 (Cat# [TT210002]).