

## Product datasheet for **TP300757L**

### SOX2 (NM\_003106) Human Recombinant Protein

#### Product data:

**Product Type:** Recombinant Proteins

**Description:** Recombinant protein of human SRY (sex determining region Y)-box 2 (SOX2), 1 mg

**Species:** Human

**Expression Host:** HEK293T

**Expression cDNA Clone or AA Sequence:** >RC200757 protein sequence  
**Red**=Cloning site **Green**=Tags(s)

MYNMMETELKPPGPQQTSGGGGGNSTAAAAGGNQKNSPDRVKRP MNAFMVWSRGQRRKMAQENPKMHNSE  
ISKRLGAEWKLLSETEKRPFIDEAKRLRALHMKEHPDYKYRPRRKT K TLMKKDKYTLPGGLLAPGGNSMA  
SGVGVGAGLGAGVNRMDSYAHMNGWSNGSYSMMQDQLGYPQH PGLNAHGAAQMMPHRYDV SALQYNSM  
TSSQTYMNGSPTYMSYSQQGTPGMALGSMG SVVKSEASSPPVVTSSHSRAPCQAGDLRDMISM YLPG  
AEVPEPAAPSRLHMSQHYQSGPVPGTAIN GTLPLSHM

**TRTRPLEQKLISEEDLAANDILDYKDDDDKV**

**Tag:** C-Myc/DDK

**Predicted MW:** 34.1 kDa

**Concentration:** >0.05 µg/µL as determined by microplate BCA method

**Purity:** > 80% as determined by SDS-PAGE and Coomassie blue staining

**Buffer:** 25 mM Tris-HCl, 100 mM glycine, pH 7.3, 10% glycerol

**Bioactivity:** EMSA assay (PMID: [25892221](https://pubmed.ncbi.nlm.nih.gov/25892221/))

**Preparation:** Recombinant protein was captured through anti-DDK affinity column followed by conventional chromatography steps.

**Note:** For testing in cell culture applications, please filter before use. Note that you may experience some loss of protein during the filtration process.

**Storage:** Store at -80°C.

**Stability:** Stable for 12 months from the date of receipt of the product under proper storage and handling conditions. Avoid repeated freeze-thaw cycles.

**RefSeq:** [NP\\_003097](https://www.ncbi.nlm.nih.gov/RefSeq/record/NP_003097)



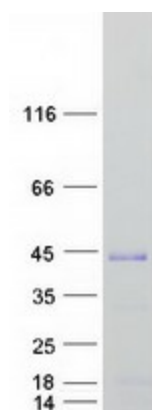
[View online »](#)

Locus ID: 6657  
UniProt ID: [P48431](#), [A0A0U3FYV6](#)  
RefSeq Size: 2520  
Cytogenetics: 3q26.33  
RefSeq ORF: 951  
Synonyms: ANOP3; MCOPS3

**Summary:** This intronless gene encodes a member of the SRY-related HMG-box (SOX) family of transcription factors involved in the regulation of embryonic development and in the determination of cell fate. The product of this gene is required for stem-cell maintenance in the central nervous system, and also regulates gene expression in the stomach. Mutations in this gene have been associated with optic nerve hypoplasia and with syndromic microphthalmia, a severe form of structural eye malformation. This gene lies within an intron of another gene called SOX2 overlapping transcript (SOX2OT). [provided by RefSeq, Jul 2008]

**Protein Families:** Adult stem cells, Cancer stem cells, Embryonic stem cells, ES Cell Differentiation/IPS, Induced pluripotent stem cells, Transcription Factors

### Product images:



Coomassie blue staining of purified SOX2 protein (Cat# [TP300757]). The protein was produced from HEK293T cells transfected with SOX2 cDNA clone (Cat# [RC200757]) using MegaTran 2.0 (Cat# [TT210002]).