

Product datasheet for **TP300413**

SYK (NM_003177) Human Recombinant Protein

Product data:

Product Type: Recombinant Proteins

Description: Recombinant protein of human spleen tyrosine kinase (SYK), transcript variant 1, 20 µg

Species: Human

Expression Host: HEK293T

Expression cDNA >RC200413 representing NM_003177

Clone or AA **Red**=Cloning site **Green**=Tags(s)

Sequence:

MASSGMADSANHLPPFFGNITREEAEDYLVQGGMSDGLYLLRQSRNYLGGFALSVAHGRKAHHYTIEREL
NGTYAIAGGRTHASPADLCHYHSQESDGLVCLLKKPFNRPQGVQPKTGPFDLKENLIREYVKQTWNLQG
QALEQAIISQKPQLEKLIATTAHEKMPWFHKGISREESQIVLIGSKTNGKFLIRARDNNGSYALCLLHE
GKVLHYRIDKDKTGKLSIPEGKKFDLWQLVEHYSYKADGLLRVLTVPCQKIGTQGNVNFVGGRRPQLPGSH
PATWSAGGIISRIKSYSFPKPGHRKSSPAQGNRQESTVSFNPEPELAPWAADKGPQREALPMDTEVYES
PYADPEEIRPKVEYLDRKLLTLEDKELGSGNFGTVKKGYYQMKKVVKTVAVKILKNEANDPALKDELLAE
ANVMQQLDNPYIVRMIGICEAESWMLVMEMAELGPLNKYLQQRHVKDKNIIELVHQVSMGMKYLEESNF
VHRDLAARNVLLVTQHYAKISDFGLSKALRADENYYKAQTHGKWPVKWYAPECINYYKFSSKSDVWSFGV
LMWEAFSYGQKPYRGMKGSEVTAMLEKGERMGCPAGCPREMYDLMNLCWYTDVENRPGFAAVELRLRNY
YDVVN

TRTRPLEQKLISEEDLAANDILDYKDDDDKV

Tag: C-Myc/DDK

Predicted MW: 71.9 kDa

Concentration: >0.05 µg/µL as determined by microplate BCA method

Purity: > 80% as determined by SDS-PAGE and Coomassie blue staining

Buffer: 25 mM Tris-HCl, 100 mM glycine, pH 7.3, 10% glycerol

Preparation: Recombinant protein was captured through anti-DDK affinity column followed by conventional chromatography steps.

Note: For testing in cell culture applications, please filter before use. Note that you may experience some loss of protein during the filtration process.

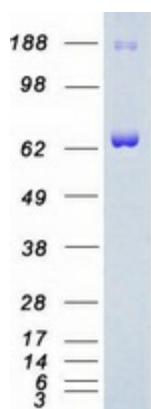
Storage: Store at -80°C.



[View online »](#)

Stability:	Stable for 12 months from the date of receipt of the product under proper storage and handling conditions. Avoid repeated freeze-thaw cycles.
RefSeq:	NP_003168
Locus ID:	6850
UniProt ID:	P43405 , A0A024R244
RefSeq Size:	2672
Cytogenetics:	9q22.2
RefSeq ORF:	1905
Synonyms:	IMD82; p72-Syk
Summary:	This gene encodes a member of the family of non-receptor type Tyr protein kinases. This protein is widely expressed in hematopoietic cells and is involved in coupling activated immunoreceptors to downstream signaling events that mediate diverse cellular responses, including proliferation, differentiation, and phagocytosis. It is thought to be a modulator of epithelial cell growth and a potential tumour suppressor in human breast carcinomas. Alternatively spliced transcript variants encoding different isoforms have been found for this gene. [provided by RefSeq, Mar 2010]
Protein Families:	Druggable Genome, Protein Kinase
Protein Pathways:	B cell receptor signaling pathway, Fc epsilon RI signaling pathway, Fc gamma R-mediated phagocytosis, Natural killer cell mediated cytotoxicity

Product images:



Coomassie blue staining of purified SYK protein (Cat# TP300413). The protein was produced from HEK293T cells transfected with SYK cDNA clone (Cat# [RC200413]) using MegaTran 2.0 (Cat# [TT210002]).