

## Product datasheet for TP300212

### MTFR1L (NM\_019557) Human Recombinant Protein

#### Product data:

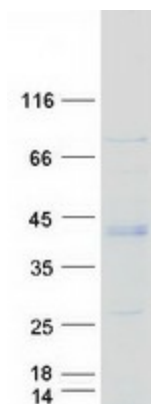
Product Type:	Recombinant Proteins
Description:	Recombinant protein of human family with sequence similarity 54, member B (FAM54B), transcript variant 1, 20 µg
Species:	Human
Expression Host:	HEK293T
Expression cDNA Clone or AA Sequence:	>RC200212 protein sequence <b>Red</b> =Cloning site <b>Green</b> =Tags(s)
	<p>MSGMEATVTIPIWQNKPHGAARSVRRIGTNLPLKPCARASFETLPNISDLCLRDVPPVPTLADIAWIAA DEEETYARVRS DTRPLRHTWKPSPLIVMQRNASVPNLRGSEERLLALKKPALPALSRTTELQDELSHLRS QIAKIVAADAASASLTPDFLSPGSSNVSSPLPCFGSSFSHTTSFVISDITEETEVEVPELPSVPLLCAS PECCKPEHKAACSSSEEDDCVLSKASSFADMMGILKDFHRMKQSQDLNRSLLKEEDPAVLISEVLRKFK ALKEEDISRKGN</p> <p><b>TRTRPLEQKLISEEDLAANDILDYKDDDDKV</b></p>
Tag:	C-Myc/DDK
Predicted MW:	31.8 kDa
Concentration:	>0.05 µg/µL as determined by microplate BCA method
Purity:	> 80% as determined by SDS-PAGE and Coomassie blue staining
Buffer:	25 mM Tris-HCl, 100 mM glycine, pH 7.3, 10% glycerol
Preparation:	Recombinant protein was captured through anti-DDK affinity column followed by conventional chromatography steps.
Note:	For testing in cell culture applications, please filter before use. Note that you may experience some loss of protein during the filtration process.
Storage:	Store at -80°C.
Stability:	Stable for 12 months from the date of receipt of the product under proper storage and handling conditions. Avoid repeated freeze-thaw cycles.
RefSeq:	<a href="#">NP_062457</a>
Locus ID:	56181



[View online »](#)

UniProt ID: [Q9H019](#), [A0A0S2Z5H6](#)  
RefSeq Size: 2120  
Cytogenetics: 1p36.11  
RefSeq ORF: 876  
Synonyms: FAM54B; HYST1888; MST116; MSTP116

### Product images:



Coomassie blue staining of purified MTFR1L protein (Cat# TP300212). The protein was produced from HEK293T cells transfected with MTFR1L cDNA clone (Cat# [RC200212]) using MegaTran 2.0 (Cat# [TT210002]).