

Product datasheet for **TL314104**

CD1C Human shRNA Plasmid Kit (Locus ID 911)

Product data:

Product Type:	shRNA Plasmids
Product Name:	CD1C Human shRNA Plasmid Kit (Locus ID 911)
Locus ID:	911
Synonyms:	BDCA1; CD1; CD1A; R7
Vector:	pGFP-C-shLenti (TR30023)
E. coli Selection:	Chloramphenicol (34 ug/ml)
Mammalian Cell Selection:	Puromycin
Format:	Lentiviral plasmids
Components:	CD1C - Human, 4 unique 29mer shRNA constructs in lentiviral GFP vector(Gene ID = 911). 5µg purified plasmid DNA per construct 29-mer scrambled shRNA cassette in pGFP-C-shLenti Vector, TR30021, included for free.
RefSeq:	NM_001765 , NM_001765.1 , NM_001765.2 , BC126465 , BC126467 , NM_001765.3
UniProt ID:	P29017
Summary:	This gene encodes a member of the CD1 family of transmembrane glycoproteins, which are structurally related to the major histocompatibility complex (MHC) proteins and form heterodimers with beta-2-microglobulin. The CD1 proteins mediate the presentation of primarily lipid and glycolipid antigens of self or microbial origin to T cells. The human genome contains five CD1 family genes organized in a cluster on chromosome 1. The CD1 family members are thought to differ in their cellular localization and specificity for particular lipid ligands. The protein encoded by this gene is broadly distributed throughout the endocytic system via a tyrosine-based motif in the cytoplasmic tail. Alternatively spliced transcript variants of this gene have been observed, but their full-length nature is not known. [provided by RefSeq, Jul 2008]
shRNA Design:	These shRNA constructs were designed against multiple splice variants at this gene locus. To be certain that your variant of interest is targeted, please contact techsupport@origene.com . If you need a special design or shRNA sequence, please utilize our custom shRNA service .

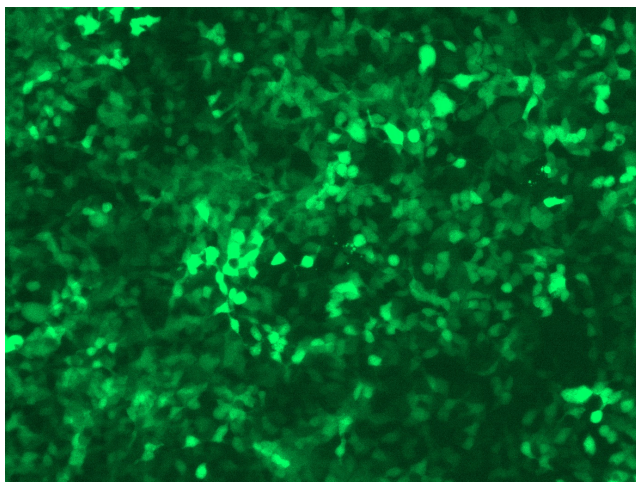


[View online »](#)

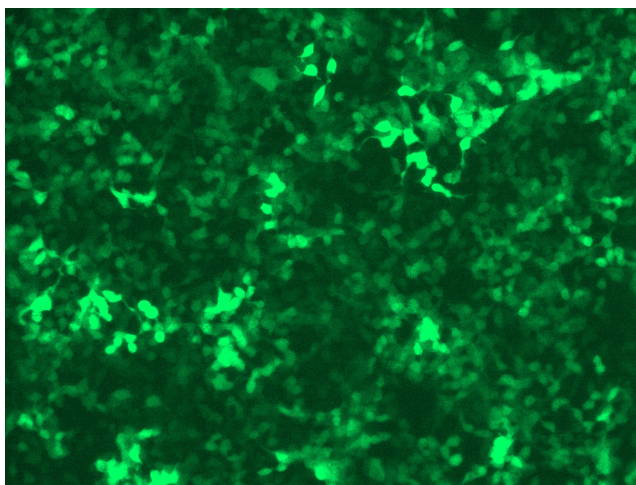
**Performance
Guaranteed:**

OriGene guarantees that the sequences in the shRNA expression cassettes are verified to correspond to the target gene with 100% identity. One of the four constructs at minimum are guaranteed to produce 70% or more gene expression knock-down provided a minimum transfection efficiency of 80% is achieved. Western Blot data is recommended over qPCR to evaluate the silencing effect of the shRNA constructs 72 hrs post transfection. To properly assess knockdown, the gene expression level from the included scramble control vector must be used in comparison with the target-specific shRNA transfected samples.

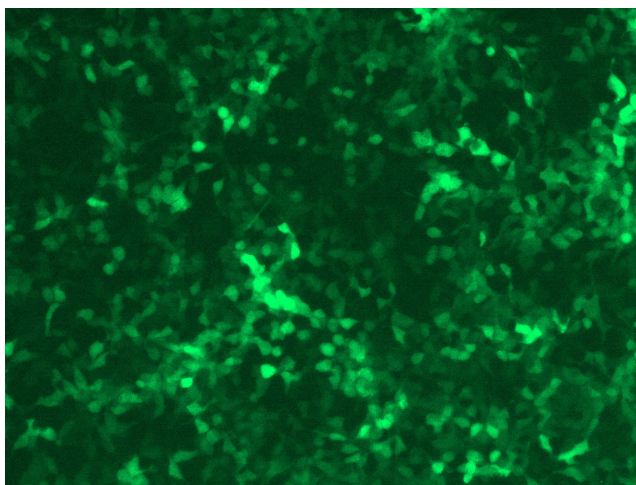
For non-conforming shRNA, requests for replacement product must be made within ninety (90) days from the date of delivery of the shRNA kit. To arrange for a free replacement with newly designed constructs, please contact Technical Services at techsupport@origene.com. Please provide your data indicating the transfection efficiency and measurement of gene expression knockdown compared to the scrambled shRNA control (Western Blot data preferred).

Product images:

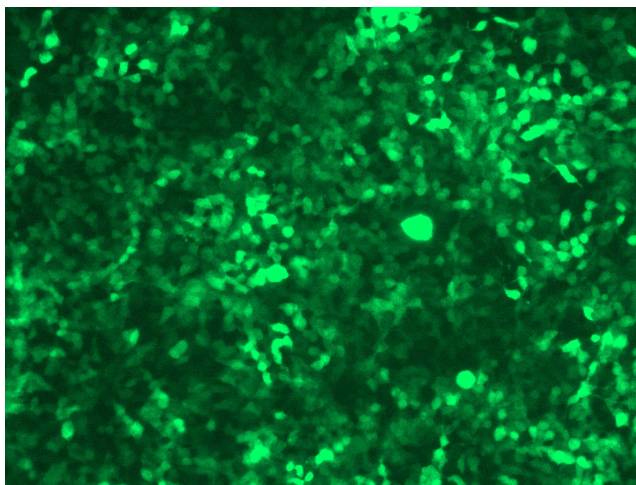
GFP signal was observed under microscope at 48 hours after transduction of TL314104A virus into HEK293 cells. TL314104A virus was prepared using lenti-shRNA TL314104A and [TR30037] packaging kit.



GFP signal was observed under microscope at 48 hours after transduction of TL314104B virus into HEK293 cells. TL314104B virus was prepared using lenti-shRNA TL314104B and [TR30037] packaging kit.



GFP signal was observed under microscope at 48 hours after transduction of [TL314104C] virus into HEK293 cells. [TL314104C] virus was prepared using lenti-shRNA [TL314104C] and [TR30037] packaging kit.



GFP signal was observed under microscope at 48 hours after transduction of [TL314104D] virus into HEK293 cells. [TL314104D] virus was prepared using lenti-shRNA [TL314104D] and [TR30037] packaging kit.