

Product datasheet for **TA890251**

TREM2 Rabbit Polyclonal Antibody

Product data:

Product Type:	Primary Antibodies
Applications:	WB
Recommended Dilution:	WB 1:2000
Reactivity:	Human
Host:	Rabbit
Isotype:	IgG
Clonality:	Polyclonal
Immunogen:	Full length human recombinant protein of human TREM2 (NP_061838) produced in Expi 293F.
Formulation:	PBS (pH 7.3) containing 1% BSA, 50% glycerol and 0.02% sodium azide.
Concentration:	1 mg/ml
Purification:	Purified from mouse ascites fluids or tissue culture supernatant by affinity chromatography (protein A/G)
Conjugation:	Unconjugated
Storage:	Store at -20°C as received.
Stability:	Stable for 12 months from date of receipt.
Predicted Protein Size:	23.4 kDa
Gene Name:	triggering receptor expressed on myeloid cells 2
Database Link:	NP_061838 Entrez Gene 54209 Human Q9NZC2
Background:	This gene encodes a membrane protein that forms a receptor signaling complex with the TYRO protein tyrosine kinase binding protein. The encoded protein functions in immune response and may be involved in chronic inflammation by triggering the production of constitutive inflammatory cytokines. Defects in this gene are a cause of polycystic lipomembranous osteodysplasia with sclerosing leukoencephalopathy (PLOS). Alternative splicing results in multiple transcript variants encoding different isoforms. [provided by RefSeq, Nov 2012]



[View online »](#)

Synonyms: PLOSL2; TREM-2; Trem2a; Trem2b; Trem2c

Protein Families: Druggable Genome, Secreted Protein, Transmembrane

Product images:

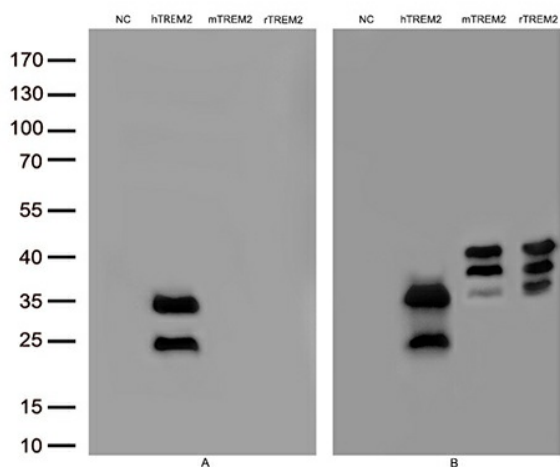


Figure A, Western blot analysis of overexpressed lysates(15ug per lane) from HEK293T cells transfected with empty plasmid ([PS100001], NC), human TREM2 recombinant protein(hTREM2), mouse TREM2 plasmid ([MR228773], mTREM2), rat TREM2 plasmid ([RR204747], rTREM2) using anti-TREM2 antibody TA890251(1:2000). Figure B, Western blot analysis of the same samples as figure A with anti-DDK antibody ([TA180144], 1:1000) (NC,mTREM2,rTREM2) and anti-His antibody ([TA150088], 1:500)(hTREM2)