

## Product datasheet for **TA890105S**

### CBL Rabbit Polyclonal Antibody

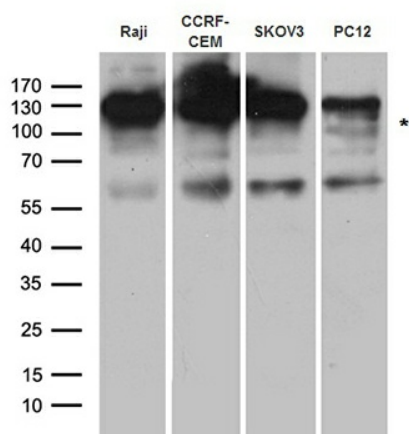
#### Product data:

Product Type:	Primary Antibodies
Applications:	WB
Recommended Dilution:	WB: 1:500~2000
Reactivity:	Human, Rat, Mouse
Host:	Rabbit
Isotype:	IgG
Clonality:	Polyclonal
Immunogen:	Recombinant protein of human CBL
Formulation:	PBS with 0.02% sodium azide, 50% glycerol, pH7.3
Concentration:	3.19 mg/ml
Purification:	Purified from the immunized serum by affinity chromatography (Protein A/G)
Conjugation:	Unconjugated
Storage:	Store at -20°C as received.
Stability:	Stable for 12 months from date of receipt.
Predicted Protein Size:	99.5 kDa
Gene Name:	Cbl proto-oncogene
Database Link:	<a href="#">NP_005179</a> <a href="#">Entrez Gene 12402 Mouse</a> <a href="#">Entrez Gene 500985 Rat</a> <a href="#">Entrez Gene 867 Human</a> <a href="#">P22681</a>
Synonyms:	C-CBL; CBL2; FRA11B; NSLL; RNF55
Protein Families:	Druggable Genome, Transcription Factors
Protein Pathways:	Chronic myeloid leukemia, Endocytosis, ErbB signaling pathway, Insulin signaling pathway, Jak-STAT signaling pathway, Pathways in cancer, T cell receptor signaling pathway, Ubiquitin mediated proteolysis



[View online »](#)

## Product images:



Western blot analysis of extracts (35ug) from different cell lines and tissues by using anti-CBL rabbit polyclonal antibody.