

Product datasheet for **TA814152S**

TDP43 (TARDBP) Mouse Monoclonal Antibody [Clone ID: OTI4C1]

Product data:

Product Type:	Primary Antibodies
Clone Name:	OTI4C1
Applications:	WB
Recommended Dilution:	WB 1:500
Reactivity:	Human, Mouse
Host:	Mouse
Isotype:	IgG1
Clonality:	Monoclonal
Immunogen:	Human recombinant protein fragment of Human TARDBP (NP_031401) produced in Ecoli.
Formulation:	PBS (pH 7.3) containing 1% BSA, 50% glycerol and 0.02% sodium azide.
Concentration:	1 mg/ml
Purification:	Purified from mouse ascites fluids or tissue culture supernatant by affinity chromatography (protein A/G)
Conjugation:	Unconjugated
Storage:	Shipped at -20°C or with ice packs, Upon delivery store at -20°C. Dilute in PBS(pH7.3) if necessary. Stable for 12 months from date of receipt. Avoid repeated freeze-thaws.
Stability:	Stable for 12 months from date of receipt.
Predicted Protein Size:	44.7 kDa
Gene Name:	TAR DNA binding protein
Database Link:	NP_031401 Entrez Gene 230908 Mouse Entrez Gene 23435 Human Q13148
Background:	The protein encoded by this gene is a transcriptional repressor that binds to chromosomally integrated TAR DNA and represses HIV-1 transcription. In addition, this protein regulates alternate splicing of the CFTR gene. A similar pseudogene is present on chromosome 20. [provided by RefSeq, Jul 2008]
Synonyms:	ALS10; TDP-43



[View online »](#)

Protein Families: Transcription Factors

Product images:

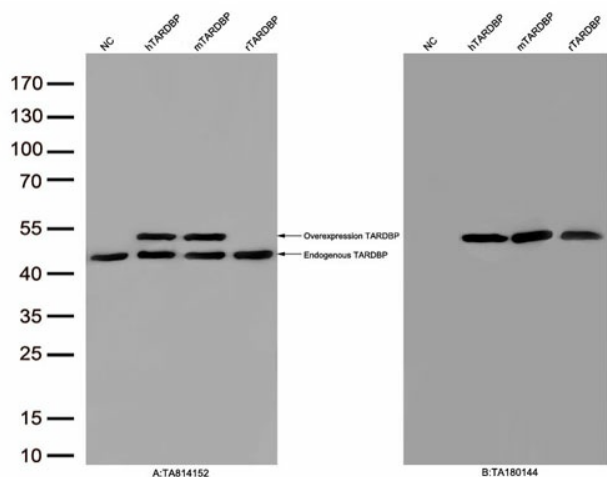
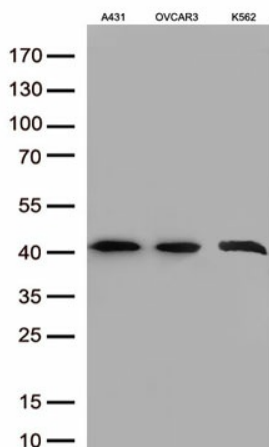


Figure A, Western blot analysis of overexpressed lysates(15ug per lane) from HEK293T cells transfected with empty plasmid ([PS100001], NC) , human TARDBP plasmid ([RC210639], hTARDBP), mouse TARDBP plasmid ([MR206534], mTARDBP) , rat TARDBP plasmid ([RR209466], rTARDBP) using anti-TARDBP antibody [TA814152](1:500). Figure B, Western blot analysis of the same samples as figure A with anti-DDK antibody ([TA180144], 1:1000).



Western blot analysis of extracts (50ug per lane) from 3 cell lines lysates by using anti-TARDBP monoclonal antibody([TA814152], 1:500).