

## Product datasheet for **TA813688BM**

### CD28 Mouse Monoclonal Antibody (HRP conjugated) [Clone ID: OTI1A2]

#### Product data:

|                         |   |
|-------------------------|---|
| Product Type:           | Primary Antibodies  |
| Clone Name:             | OTI1A2  |
| Applications:           | FC  |
| Recommended Dilution:   | FLOW 1:100  |
| Reactivity:             | Human   |
| Host:                   | Mouse   |
| Isotype:                | IgG1  |
| Clonality:              | Monoclonal  |
| Immunogen:              | Full length human recombinant protein of human CD28 (NP_006130) produced in HEK293T cell.   |
| Formulation:            | PBS (pH 7.3) containing 1% BSA, 50% glycerol.   |
| Concentration:          | 0.5 mg/ml   |
| Purification:           | Purified from mouse ascites fluids or tissue culture supernatant by affinity chromatography (protein A/G)   |
| Conjugation:            | HRP   |
| Storage:                | Shipped at -20°C or with ice packs, Upon delivery store at -20°C. Dilute in PBS(pH7.3) if necessary. Stable for 12 months from date of receipt. Avoid repeated freeze-thaws.  |
| Stability:              | Stable for 12 months from date of receipt.  |
| Predicted Protein Size: | 25.1 kDa  |
| Gene Name:              | CD28 molecule   |
| Database Link:          | <a href="#">NP_006130</a><br><a href="#">Entrez Gene 940 Human</a><br><a href="#">P10747</a>  |
| Background:             | The protein encoded by this gene is essential for T-cell proliferation and survival, cytokine production, and T-helper type-2 development. Several alternatively spliced transcript variants encoding different isoforms have been found for this gene.[provided by RefSeq, Jul 2011] |
| Synonyms:               | Tp44  |

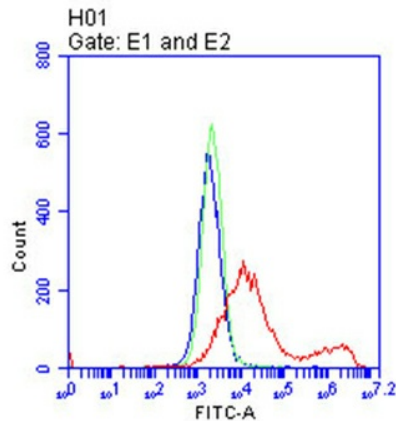


[View online »](#)

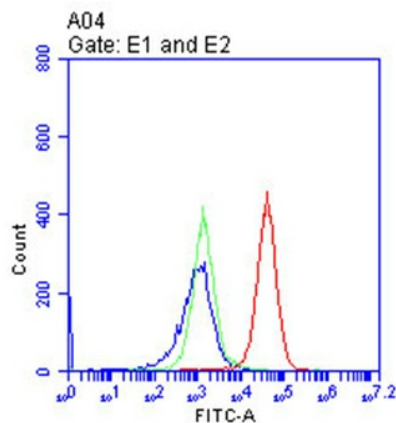
**Protein Families:** Druggable Genome, Transmembrane

**Protein Pathways:** Allograft rejection, Autoimmune thyroid disease, Cell adhesion molecules (CAMs), Graft-versus-host disease, Systemic lupus erythematosus, T cell receptor signaling pathway, Type I diabetes mellitus, Viral myocarditis

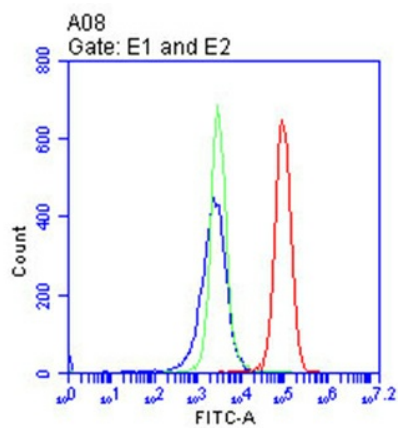
### Product images:



Flow cytometric analysis of living 293T cells transfected with CD28 overexpression plasmid ([RC211318], Red)/empty vector ([PS100001], Blue) using anti-CD28 antibody ([TA813688]). Cells incubated with a non-specific antibody (Green) were used as isotype control.(1:100)



Flow cytometric analysis of living Jurkat cells, using anti-CD28 antibody([TA813688], Red), compared to an isotype control (green), and a PBS control (blue).(1:100)



Flow cytometric analysis of living RPMI-8226 cells, using anti-CD28 antibody([TA813688], Red), compared to an isotype control (green), and a PBS control (blue).(1:100)