

## Product datasheet for **TA813664AM**

### IL3RA Mouse Monoclonal Antibody (Biotin conjugated) [Clone ID: OTI4A10]

#### Product data:

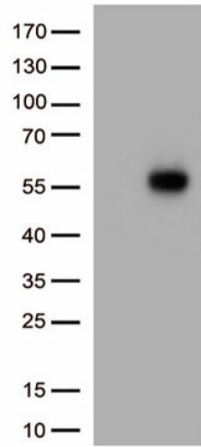
Product Type:	Primary Antibodies
Clone Name:	OTI4A10
Applications:	FC, WB
Recommended Dilution:	WB 1:500-1000, FLOW 1:100
Reactivity:	Human
Host:	Mouse
Isotype:	IgG2b
Clonality:	Monoclonal
Immunogen:	Full length human recombinant protein of human IL3RA (NP_002174) produced in HEK293T cell.
Formulation:	PBS (pH 7.3) containing 1% BSA, 50% glycerol and 0.02% sodium azide.
Concentration:	0.5 mg/ml
Purification:	Purified from mouse ascites fluids or tissue culture supernatant by affinity chromatography (protein A/G)
Conjugation:	Biotin
Storage:	Shipped at -20°C or with ice packs, Upon delivery store at -20°C. Dilute in PBS(pH7.3) if necessary. Stable for 12 months from date of receipt. Avoid repeated freeze-thaws.
Stability:	Stable for 12 months from date of receipt.
Predicted Protein Size:	43.33 kDa
Gene Name:	interleukin 3 receptor subunit alpha
Database Link:	<a href="#">NP_002174</a> <a href="#">Entrez Gene 3563 Human</a> <a href="#">P26951</a>
Background:	This is a receptor for interleukin-3. [UniProtKB/Swiss-Prot Function]
Synonyms:	CD123; hIL-3Ra; IL3R; IL3RAY; IL3RX; IL3RY
Protein Families:	Transmembrane



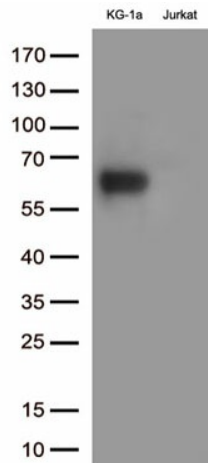
[View online »](#)

**Protein Pathways:** Apoptosis, Cytokine-cytokine receptor interaction, Hematopoietic cell lineage, Jak-STAT signaling pathway

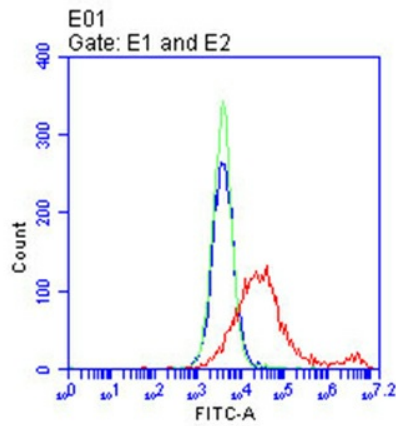
**Product images:**



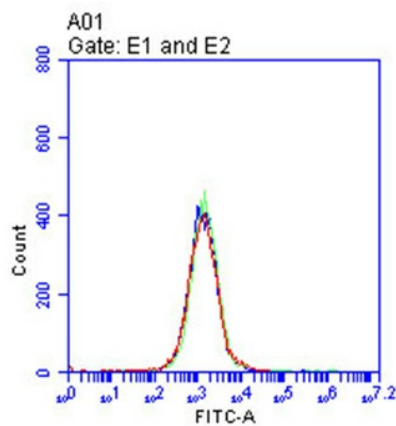
HEK293T cells were transfected with the pCMV6-ENTRY control (Left lane) or pCMV6-ENTRY IL3RA ([RC206420], Right lane) cDNA for 48 hrs and lysed. Equivalent amounts of cell lysates (5 ug per lane) were separated by SDS-PAGE and immunoblotted with anti-IL3RA.(1:1000)



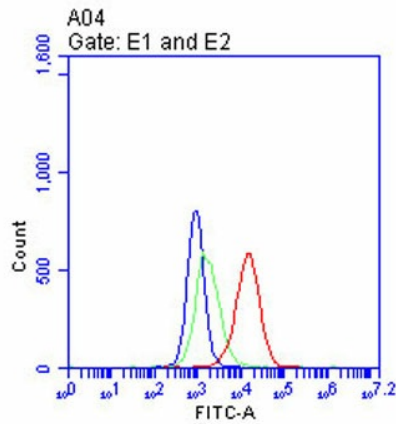
Western blot analysis of extracts (35ug) from 2 cell lines lysates by using anti-IL3RA monoclonal antibody. (1:500)



Flow cytometric analysis of living 293T cells transfected with IL3RA overexpression plasmid ([RC206420]), Red/empty vector ([PS100001], Blue) using anti-IL3RA antibody ([TA813664]). Cells incubated with a non-specific antibody (Green) were used as isotype control. 1:100



Flow cytometric analysis of living Jurkat cells, using anti-IL3RA antibody([TA813664], Red), compared to an isotype control (green), and a PBS control (blue).(1:100)



Flow cytometric analysis of living KG-1a cells, using anti-IL3RA antibody([TA813664], Red), compared to an isotype control (green), and a PBS control (blue).(1:100)