

Product datasheet for **TA812629**

GTF3C4 Mouse Monoclonal Antibody [Clone ID: OTI4A3]

Product data:

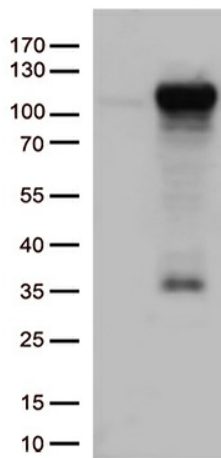
Product Type:	Primary Antibodies
Clone Name:	OTI4A3
Applications:	IHC, WB
Recommended Dilution:	WB 1:500, IHC 1:750
Reactivity:	Human, Monkey, Mouse, Rat
Host:	Mouse
Isotype:	IgG1
Clonality:	Monoclonal
Immunogen:	Human recombinant protein fragment corresponding to amino acids 583-822 of human GTF3C4 (NP_036336) produced in E.coli.
Formulation:	PBS (pH 7.3) containing 1% BSA, 50% glycerol and 0.02% sodium azide.
Concentration:	1 mg/ml
Purification:	Purified from mouse ascites fluids or tissue culture supernatant by affinity chromatography (protein A/G)
Conjugation:	Unconjugated
Storage:	Store at -20°C as received.
Stability:	Stable for 12 months from date of receipt.
Gene Name:	general transcription factor IIIC subunit 4
Database Link:	NP_036336 Entrez Gene 714849 Monkey Entrez Gene 9329 Human Q9UKN8
Background:	Essential for RNA polymerase III to make a number of small nuclear and cytoplasmic RNAs, including 5S RNA, tRNA, and adenovirus-associated (VA) RNA of both cellular and viral origin. Has histone acetyltransferase activity (HAT) with unique specificity for free and nucleosomal H3. May cooperate with GTF3C5 in facilitating the recruitment of TFIIB and RNA polymerase through direct interactions with BRF1, POLR3C and POLR3F. May be localized close to the A box. [UniProtKB/Swiss-Prot Function]
Synonyms:	KAT12; TF3C-delta; TFI190; TFIIC90; TFIIC290; TFIICDELTA



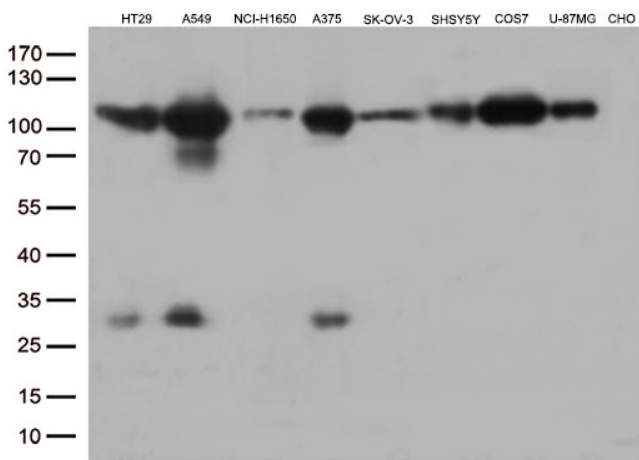
[View online »](#)

Protein Families: Transcription Factors

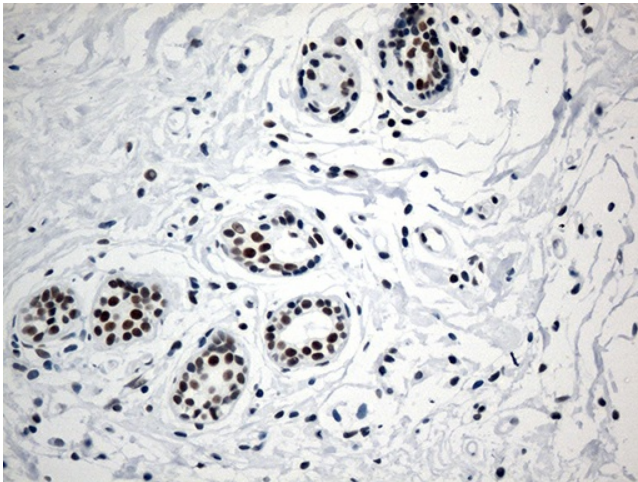
Product images:



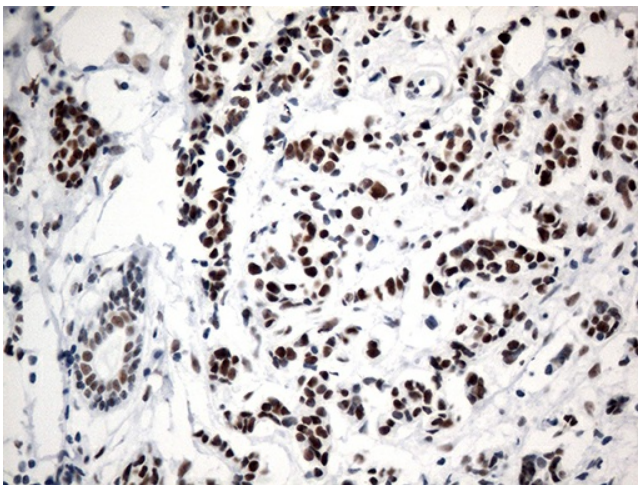
HEK293T cells were transfected with the pCMV6-ENTRY control (Left lane) or pCMV6-ENTRY GTF3C4 ([RC210525], Right lane) cDNA for 48 hrs and lysed. Equivalent amounts of cell lysates (5 ug per lane) were separated by SDS-PAGE and immunoblotted with anti-GTF3C4 (1:500).



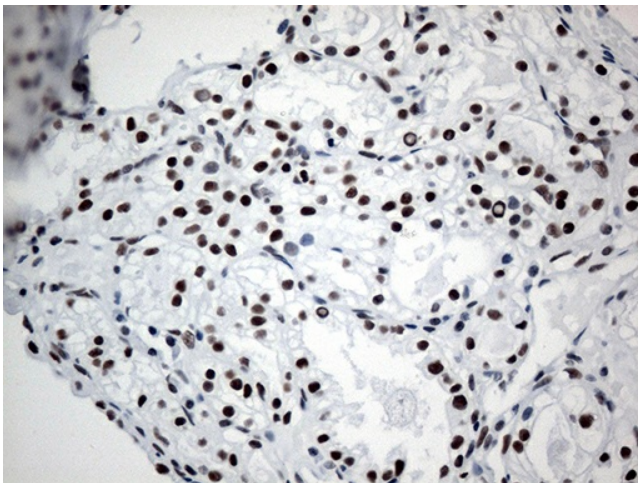
Western blot analysis of extracts (35ug) from 9 different cell lines by using anti-GTF3C4 monoclonal antibody (1:500).



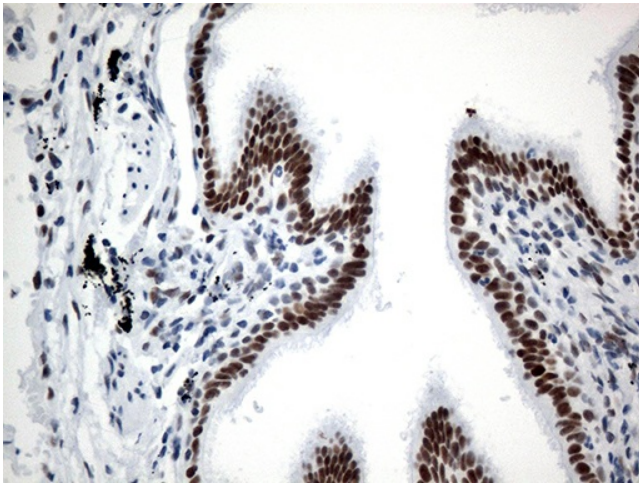
Immunohistochemical staining of paraffin-embedded Human breast tissue within the normal limits using anti-GTF3C4 mouse monoclonal antibody. (Heat-induced epitope retrieval by 1mM EDTA in 10mM Tris buffer (pH8.5) at 120°C for 3min, TA812629) (1:750)



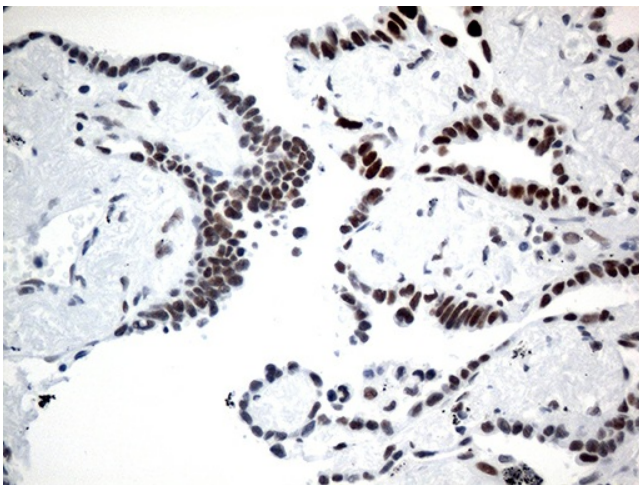
Immunohistochemical staining of paraffin-embedded Adenocarcinoma of Human breast tissue tissue using anti-GTF3C4 mouse monoclonal antibody. (Heat-induced epitope retrieval by 1mM EDTA in 10mM Tris buffer (pH8.5) at 120°C for 3min, TA812629) (1:750)



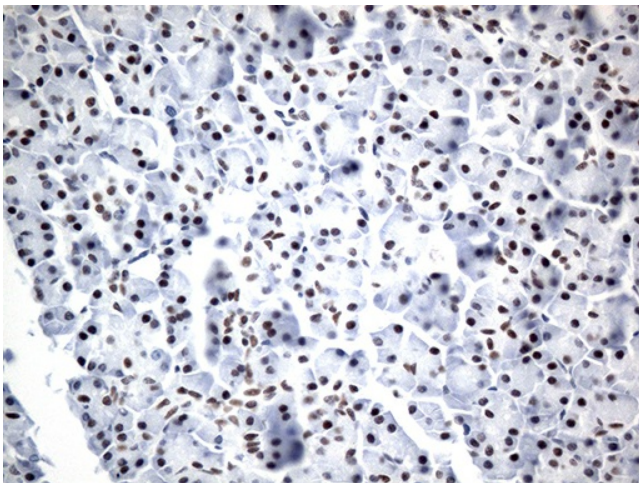
Immunohistochemical staining of paraffin-embedded Carcinoma of Human kidney tissue using anti-GTF3C4 mouse monoclonal antibody. (Heat-induced epitope retrieval by 1mM EDTA in 10mM Tris buffer (pH8.5) at 120°C for 3min, TA812629) (1:750)



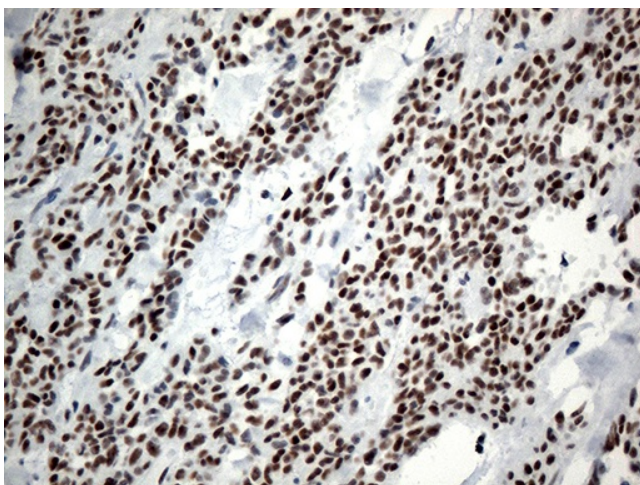
Immunohistochemical staining of paraffin-embedded Human lung tissue within the normal limits using anti-GTF3C4 mouse monoclonal antibody. (Heat-induced epitope retrieval by 1mM EDTA in 10mM Tris buffer (pH8.5) at 120°C for 3min, TA812629) (1:750)



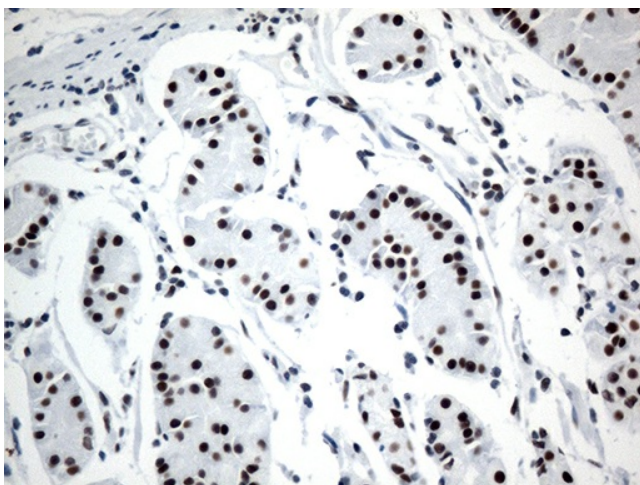
Immunohistochemical staining of paraffin-embedded Carcinoma of Human lung tissue using anti-GTF3C4 mouse monoclonal antibody. (Heat-induced epitope retrieval by 1mM EDTA in 10mM Tris buffer (pH8.5) at 120°C for 3min, TA812629) (1:750)



Immunohistochemical staining of paraffin-embedded Human pancreas tissue within the normal limits using anti-GTF3C4 mouse monoclonal antibody. (Heat-induced epitope retrieval by 1mM EDTA in 10mM Tris buffer (pH8.5) at 120°C for 3min, TA812629) (1:750)



Immunohistochemical staining of paraffin-embedded Carcinoma of Human pancreas tissue using anti-GTF3C4 mouse monoclonal antibody. (Heat-induced epitope retrieval by 1mM EDTA in 10mM Tris buffer (pH8.5) at 120°C for 3min, TA812629) (1:750)



Immunohistochemical staining of paraffin-embedded Human gastric tissue within the normal limits using anti-GTF3C4 mouse monoclonal antibody. (Heat-induced epitope retrieval by 1mM EDTA in 10mM Tris buffer (pH8.5) at 120°C for 3min, TA812629) (1:750)