

Product datasheet for **TA812244S**

B7-1 (CD80) Mouse Monoclonal Antibody [Clone ID: OTI1A10]

Product data:

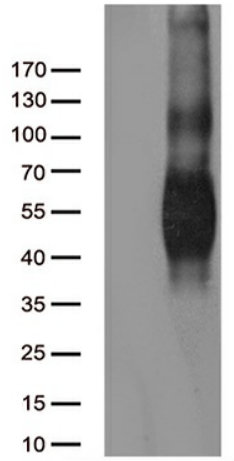
Product Type:	Primary Antibodies
Clone Name:	OTI1A10
Applications:	ELISA, FC, LMNX, WB
Recommended Dilution:	WB 1:500, FLOW 1:100
Reactivity:	Human
Host:	Mouse
Isotype:	IgG2b
Clonality:	Monoclonal
Immunogen:	Full length human recombinant protein of human CD80 (NP_005182) produced in HEK293T cell.
Formulation:	PBS (pH 7.3) containing 1% BSA, 50% glycerol and 0.02% sodium azide.
Concentration:	1 mg/ml
Purification:	Purified from mouse ascites fluids or tissue culture supernatant by affinity chromatography (protein A/G)
Conjugation:	Unconjugated
Storage:	Store at -20°C as received.
Stability:	Stable for 12 months from date of receipt.
Gene Name:	CD80 molecule
Database Link:	NP_005182 Entrez Gene 941 Human P33681
Background:	The protein encoded by this gene is a membrane receptor that is activated by the binding of CD28 or CTLA-4. The activated protein induces T-cell proliferation and cytokine production. This protein can act as a receptor for adenovirus subgroup B and may play a role in lupus neuropathy. [provided by RefSeq, Aug 2011]
Synonyms:	B7; B7-1; B7.1; BB1; CD28LG; CD28LG1; LAB7
Protein Families:	Druggable Genome, Transcription Factors, Transmembrane



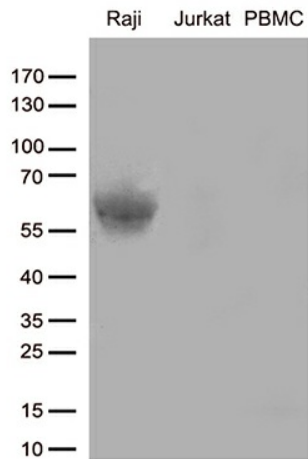
[View online »](#)

Protein Pathways:

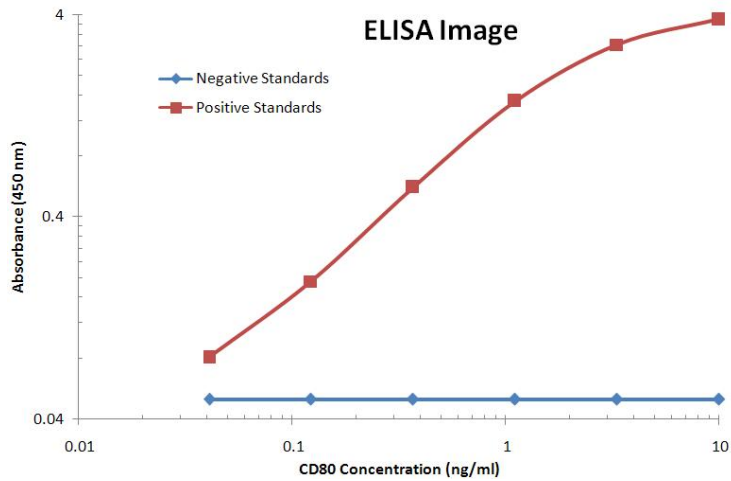
Allograft rejection, Autoimmune thyroid disease, Cell adhesion molecules (CAMs), Graft-versus-host disease, Systemic lupus erythematosus, Toll-like receptor signaling pathway, Type I diabetes mellitus, Viral myocarditis

Product images:


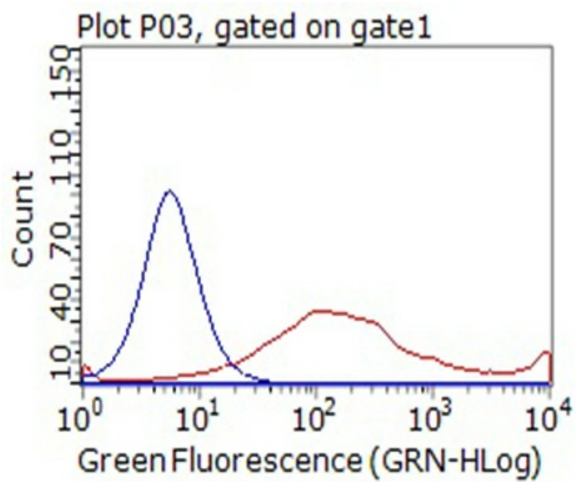
HEK293T cells were transfected with the pCMV6-ENTRY control (Left lane) or pCMV6-ENTRY CD80 ([RC206540], Right lane) cDNA for 48 hrs and lysed. Equivalent amounts of cell lysates (5 ug per lane) were separated by SDS-PAGE and immunoblotted with anti-CD80 (1:500).



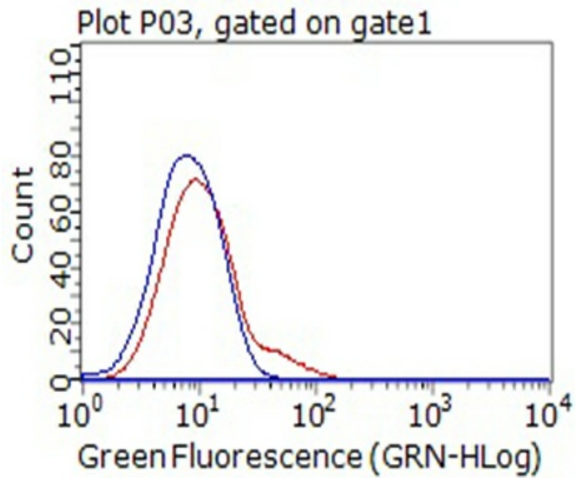
Western blot analysis of extracts (35ug) from cell lines and/or tissue lysates by using anti-CD80 monoclonal antibody (1:500).



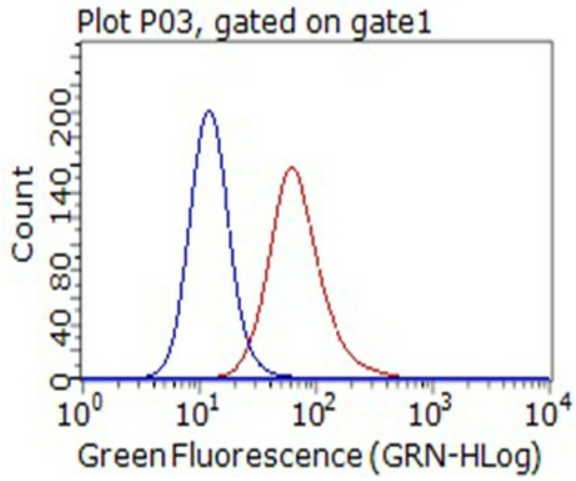
CD80 ELISA with 1A10 ([TA812244]) Capture and 11G5 ([TA812246]) Detection Antibodies. Substrate used: Recombinant Human CD80 ([TP700242])



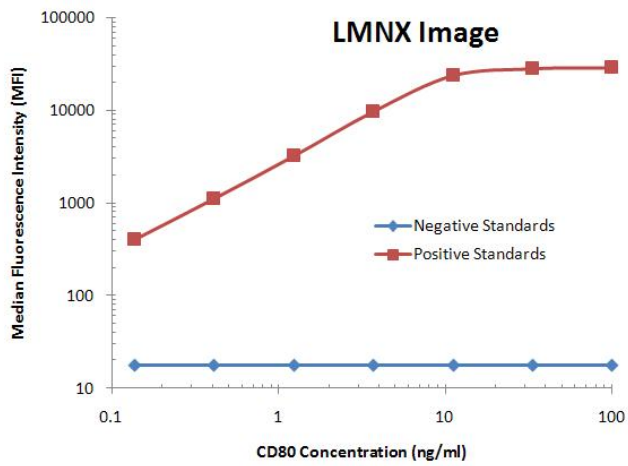
HEK293T cells transfected with either [RC206540] overexpress plasmid (Red) or IgG isotype control (Blue) were immunostained by anti-CD80 antibody ([TA812244]), and then analyzed by flow cytometry (1:100).



Flow cytometric Analysis of living Jurkat cells, using anti-CD80 antibody ([TA812244]), (Red), compared to an IgG isotype control, (Blue) (1:100).



Flow cytometric Analysis of living Raji cells, using anti-CD80 antibody ([TA812244]), (Red), compared to an IgG isotype control, (Blue) (1:100).



CD80 Luminex with 1A10 ([TA812244]) Capture and 11G5 ([TA812246]) Detection Antibodies. Substrate used: Recombinant Human CD80 ([TP700242])