

Product datasheet for **TA812109AM**

SERCA2 (ATP2A2) Mouse Monoclonal Antibody (Biotin conjugated) [Clone ID: OTI4B12]

Product data:

Product Type:	Primary Antibodies
Clone Name:	OTI4B12
Applications:	WB
Recommended Dilution:	WB 1:500
Reactivity:	Human, Mouse, Rat
Host:	Mouse
Isotype:	IgG1
Clonality:	Monoclonal
Immunogen:	Human recombinant protein fragment corresponding to amino acids 314-756 of human ATP2A2 (NP_733765) produced in E.coli.
Formulation:	PBS (pH 7.3) containing 1% BSA, 50% glycerol and 0.02% sodium azide.
Concentration:	0.5 mg/ml
Purification:	Purified from mouse ascites fluids or tissue culture supernatant by affinity chromatography (protein A/G)
Conjugation:	Biotin
Storage:	Store at -20°C as received.
Stability:	Stable for 12 months from date of receipt.
Gene Name:	ATPase sarcoplasmic/endoplasmic reticulum Ca ²⁺ transporting 2
Database Link:	NP_733765 Entrez Gene 11938 Mouse Entrez Gene 29693 Rat Entrez Gene 488 Human P16615



[View online »](#)

Background:

This gene encodes one of the SERCA Ca²⁺-ATPases, which are intracellular pumps located in the sarcoplasmic or endoplasmic reticula of muscle cells. This enzyme catalyzes the hydrolysis of ATP coupled with the translocation of calcium from the cytosol into the sarcoplasmic reticulum lumen, and is involved in regulation of the contraction/relaxation cycle. Mutations in this gene cause Darier-White disease, also known as keratosis follicularis, an autosomal dominant skin disorder characterized by loss of adhesion between epidermal cells and abnormal keratinization. Alternative splicing results in multiple transcript variants encoding different isoforms. [provided by RefSeq, Oct 2008]

Synonyms:

ATP2B; DAR; DD; SERCA2

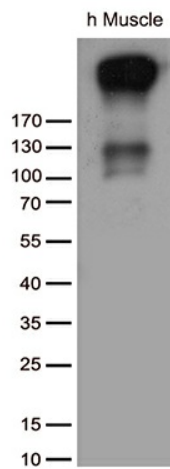
Protein Families:

Druggable Genome, Transmembrane

Protein Pathways:

Alzheimer's disease, Arrhythmogenic right ventricular cardiomyopathy (ARVC), Calcium signaling pathway, Cardiac muscle contraction, Dilated cardiomyopathy, Hypertrophic cardiomyopathy (HCM)

Product images:



Western blot analysis of extracts (35ug) from tissue lysate by using anti-ATP2A2 monoclonal antibody (1:500).