

Product datasheet for **TA811440AM**

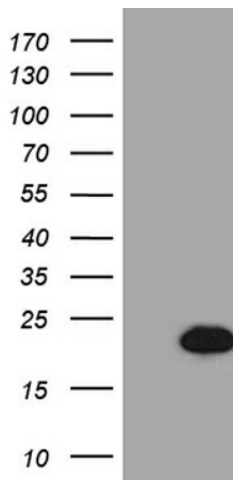
FHIT Mouse Monoclonal Antibody (Biotin conjugated) [Clone ID: OTI1D7]

Product data:

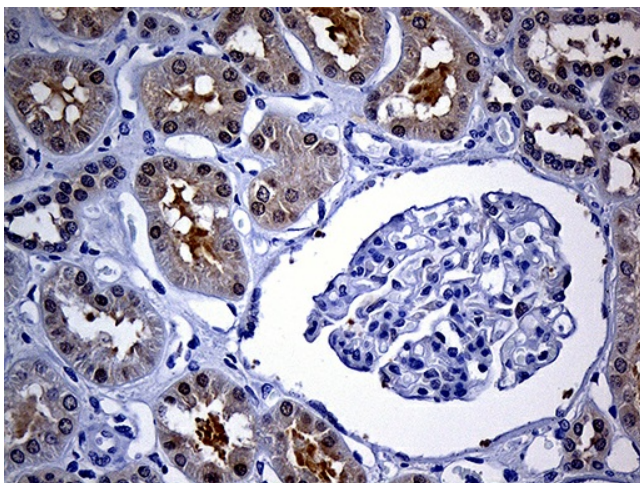
Product Type:	Primary Antibodies
Clone Name:	OTI1D7
Applications:	IHC, WB
Recommended Dilution:	WB 1:2000, IHC 1:250
Reactivity:	Human, Mouse, Rat
Host:	Mouse
Isotype:	IgG2b
Clonality:	Monoclonal
Immunogen:	Full length human recombinant protein of human FHIT (NP_002003) produced in HEK293T cell.
Formulation:	PBS (pH 7.3) containing 1% BSA, 50% glycerol and 0.02% sodium azide.
Concentration:	0.5 mg/ml
Purification:	Purified from mouse ascites fluids or tissue culture supernatant by affinity chromatography (protein A/G)
Conjugation:	Biotin
Storage:	Store at -20°C as received.
Stability:	Stable for 12 months from date of receipt.
Predicted Protein Size:	16.7 kDa
Gene Name:	fragile histidine triad
Database Link:	NP_002003 Entrez Gene 14198 Mouse Entrez Gene 60398 Rat Entrez Gene 2272 Human P49789
Synonyms:	AP3Aase; FRA3B
Protein Pathways:	Non-small cell lung cancer, Purine metabolism, Small cell lung cancer



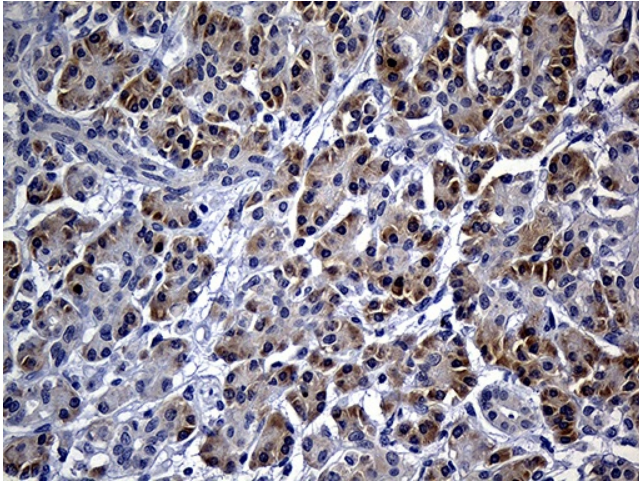
[View online »](#)

Product images:

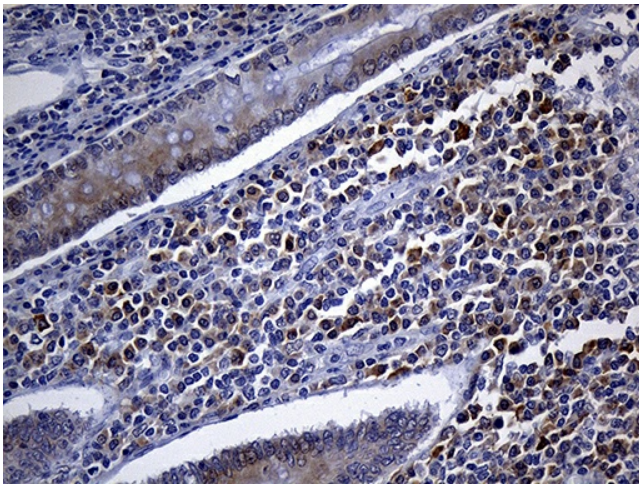
HEK293T cells were transfected with the pCMV6-ENTRY control (Cat# [PS100001], Left lane) or pCMV6-ENTRY FHIT (Cat# [RC207120], Right lane) cDNA for 48 hrs and lysed. Equivalent amounts of cell lysates (5 ug per lane) were separated by SDS-PAGE and immunoblotted with anti-FHIT (Cat# [TA811440])(1:2000). Positive lysates [LY419588] (100ug) and [LC419588] (20ug) can be purchased separately from OriGene.



Immunohistochemical staining of paraffin-embedded Human Kidney tissue within the normal limits using anti-FHIT mouse monoclonal antibody. (Heat-induced epitope retrieval by 1mM EDTA in 10mM Tris buffer (pH8.5) at 120°C for 3min, [TA811440]) (1:250)



Immunohistochemical staining of paraffin-embedded Human pancreas tissue within the normal limits using anti-FHIT mouse monoclonal antibody. (Heat-induced epitope retrieval by 1mM EDTA in 10mM Tris buffer (pH8.5) at 120°C for 3min, [TA811440]) (1:250)



Immunohistochemical staining of paraffin-embedded Human appendix tissue within the normal limits using anti-FHIT mouse monoclonal antibody. (Heat-induced epitope retrieval by 1mM EDTA in 10mM Tris buffer (pH8.5) at 120°C for 3min, [TA811440]) (1:250)