

Product datasheet for **TA811173AM**

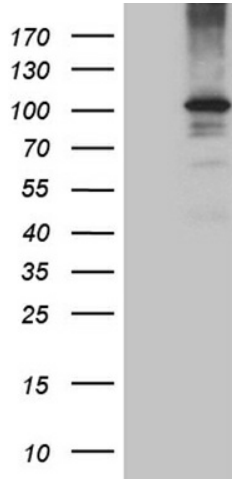
AGO1 Mouse Monoclonal Antibody (Biotin conjugated) [Clone ID: OTI4G1]

Product data:

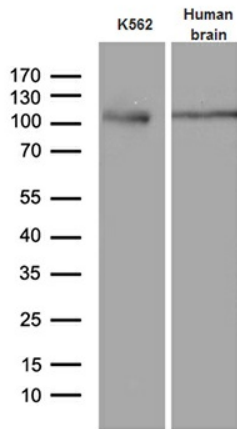
Product Type:	Primary Antibodies
Clone Name:	OTI4G1
Applications:	IHC, WB
Recommended Dilution:	WB 1:500, IHC 1:150
Reactivity:	Human, Mouse, Rat
Host:	Mouse
Isotype:	IgG1
Clonality:	Monoclonal
Immunogen:	Human recombinant protein fragment corresponding to amino acids 226-490 of human EIF2C1 (NP_036331) produced in E.coli.
Formulation:	PBS (pH 7.3) containing 1% BSA, 50% glycerol and 0.02% sodium azide.
Concentration:	0.5 mg/ml
Purification:	Purified from mouse ascites fluids or tissue culture supernatant by affinity chromatography (protein A/G)
Conjugation:	Biotin
Storage:	Store at -20°C as received.
Stability:	Stable for 12 months from date of receipt.
Predicted Protein Size:	97 kDa
Gene Name:	argonaute 1, RISC catalytic component
Database Link:	NP_036331 Entrez Gene 236511 MouseEntrez Gene 313594 RatEntrez Gene 26523 Human Q9UL18
Synonyms:	EIF2C; EIF2C1; GERP95; Q99
Protein Families:	Druggable Genome



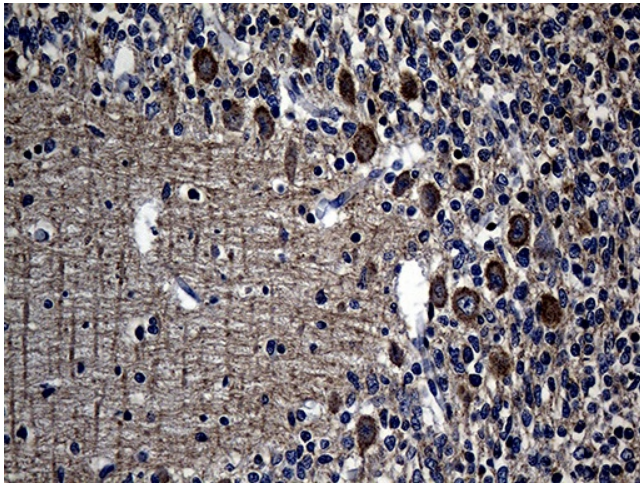
[View online »](#)

Product images:


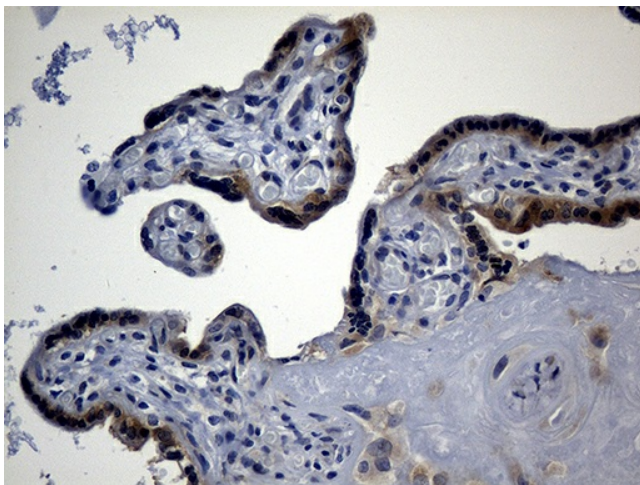
HEK293T cells were transfected with the pCMV6-ENTRY control (Cat# [PS100001], Left lane) or pCMV6-ENTRY EIF2C1 (Cat# [RC209163], Right lane) cDNA for 48 hrs and lysed. Equivalent amounts of cell lysates (5 ug per lane) were separated by SDS-PAGE and immunoblotted with anti-EIF2C1 (Cat# [TA811173])(1:500). Positive lysates [LY402163] (100ug) and [LC402163] (20ug) can be purchased separately from OriGene.



Western blot analysis of extracts (35ug) from K562 cell line and human brain tissue lysate by using anti-EIF2C1 monoclonal antibody (1:500).



Immunohistochemical staining of paraffin-embedded Human embryonic cerebellum within the normal limits using anti-EIF2C1 mouse monoclonal antibody. (Heat-induced epitope retrieval by 1mM EDTA in 10mM Tris buffer (pH8.5) at 120°C for 3min, [TA811173]) (1:150)



Immunohistochemical staining of paraffin-embedded Human placenta tissue within the normal limits using anti-EIF2C1 mouse monoclonal antibody. (Heat-induced epitope retrieval by 1mM EDTA in 10mM Tris buffer (pH8.5) at 120°C for 3min, [TA811173]) (1:150)