

Product datasheet for **TA811148AM**

SF3B14 (SF3B6) Mouse Monoclonal Antibody (Biotin conjugated) [Clone ID: OT18A1]

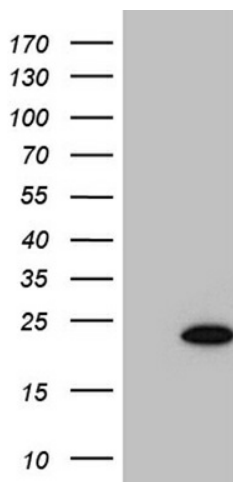
Product data:

Product Type:	Primary Antibodies
Clone Name:	OT18A1
Applications:	IHC, WB
Recommended Dilution:	WB 1:2000, IHC 1:1000
Reactivity:	Human, Mouse, Rat
Host:	Mouse
Isotype:	IgG2b
Clonality:	Monoclonal
Immunogen:	Full length human recombinant protein of human SF3B14 (NP_057131) produced in E.coli.
Formulation:	PBS (pH 7.3) containing 1% BSA, 50% glycerol and 0.02% sodium azide.
Concentration:	0.5 mg/ml
Purification:	Purified from mouse ascites fluids or tissue culture supernatant by affinity chromatography (protein A/G)
Conjugation:	Biotin
Storage:	Store at -20°C as received.
Stability:	Stable for 12 months from date of receipt.
Predicted Protein Size:	14.4 kDa
Gene Name:	splicing factor 3b subunit 6
Database Link:	NP_057131 Entrez Gene 66055 Mouse Entrez Gene 100365504 Rat Entrez Gene 51639 Human Q9Y3B4
Synonyms:	CGI-110; HSPC175; Ht006; P14; SAP14; SAP14a; SF3B14; SF3B14a
Protein Pathways:	Spliceosome

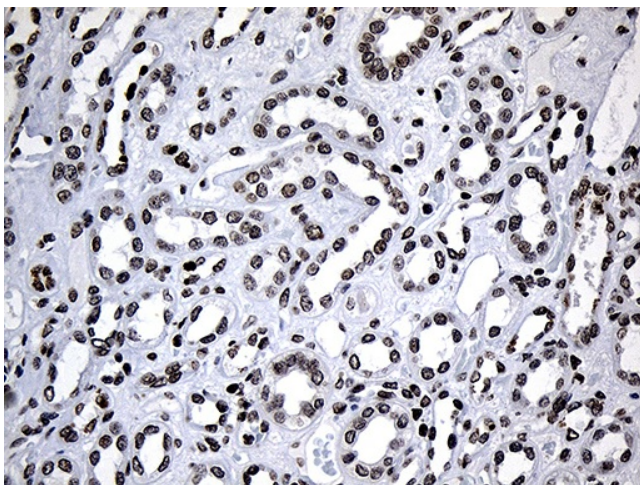


[View online »](#)

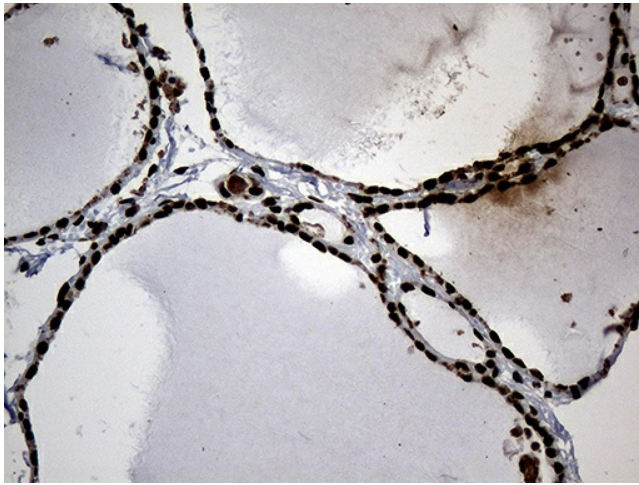
Product images:



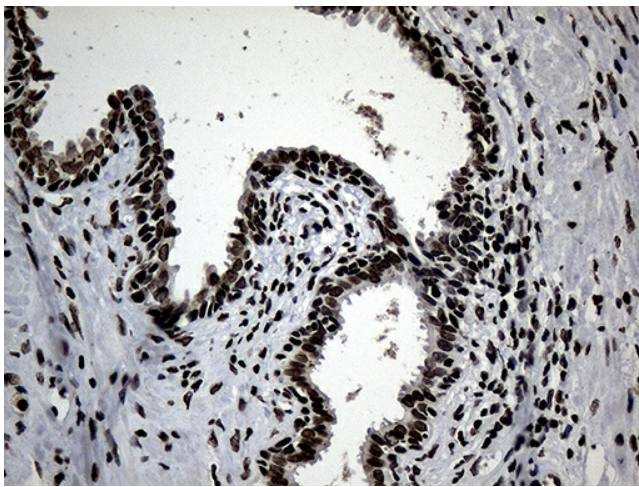
HEK293T cells were transfected with the pCMV6-ENTRY control (Cat# [PS100001], Left lane) or pCMV6-ENTRY SF3B14 (Cat# [RC201866], Right lane) cDNA for 48 hrs and lysed. Equivalent amounts of cell lysates (5 ug per lane) were separated by SDS-PAGE and immunoblotted with anti-SF3B14 (Cat# [TA811148])(1:2000). Positive lysates [LY414228] (100ug) and [LC414228] (20ug) can be purchased separately from OriGene.



Immunohistochemical staining of paraffin-embedded Human Kidney tissue within the normal limits using anti-SF3B14 mouse monoclonal antibody. (Heat-induced epitope retrieval by 1mM EDTA in 10mM Tris buffer (pH8.5) at 120°C for 3min, [TA811148]) (1:1000)



Immunohistochemical staining of paraffin-embedded Human thyroid tissue within the normal limits using anti-SF3B14 mouse monoclonal antibody. (Heat-induced epitope retrieval by 1mM EDTA in 10mM Tris buffer (pH8.5) at 120°C for 3min, [TA811148]) (1:1000)



Immunohistochemical staining of paraffin-embedded Human prostate tissue within the normal limits using anti-SF3B14 mouse monoclonal antibody. (Heat-induced epitope retrieval by 1mM EDTA in 10mM Tris buffer (pH8.5) at 120°C for 3min, [TA811148]) (1:1000)