

## Product datasheet for **TA810522**

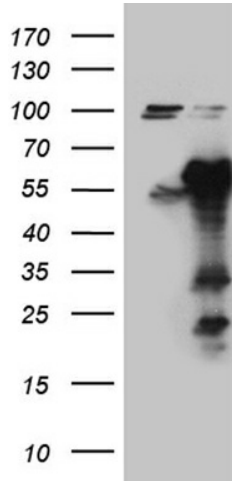
### **KIAA1970 (EARS2) Mouse Monoclonal Antibody [Clone ID: OTI2C1]**

#### **Product data:**

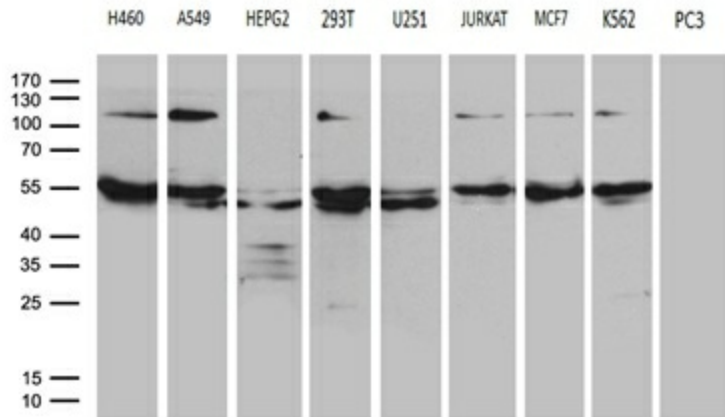
<b>Product Type:</b>	Primary Antibodies
<b>Clone Name:</b>	OTI2C1
<b>Applications:</b>	IHC, WB
<b>Recommended Dilution:</b>	WB 1:500~2000, IHC 1:500
<b>Reactivity:</b>	Human, Mouse, Rat
<b>Host:</b>	Mouse
<b>Isotype:</b>	IgG1
<b>Clonality:</b>	Monoclonal
<b>Immunogen:</b>	Full length human recombinant protein of human EARS2 (NP_001077083) produced in E.coli.
<b>Formulation:</b>	PBS (pH 7.3) containing 1% BSA, 50% glycerol and 0.02% sodium azide.
<b>Concentration:</b>	1 mg/ml
<b>Purification:</b>	Purified from mouse ascites fluids or tissue culture supernatant by affinity chromatography (protein A/G)
<b>Conjugation:</b>	Unconjugated
<b>Storage:</b>	Store at -20°C as received.
<b>Stability:</b>	Stable for 12 months from date of receipt.
<b>Predicted Protein Size:</b>	58.5 kDa
<b>Gene Name:</b>	glutamyl-tRNA synthetase 2, mitochondrial
<b>Database Link:</b>	<a href="#">NP_001077083</a> <a href="#">Entrez Gene 67417 Mouse</a> <a href="#">Entrez Gene 361641 Rat</a> <a href="#">Entrez Gene 124454 Human</a> <a href="#">Q5JPH6</a>
<b>Synonyms:</b>	COXPD12; gluRS; MSE1
<b>Protein Families:</b>	Druggable Genome
<b>Protein Pathways:</b>	Aminoacyl-tRNA biosynthesis, Metabolic pathways, Porphyrin and chlorophyll metabolism



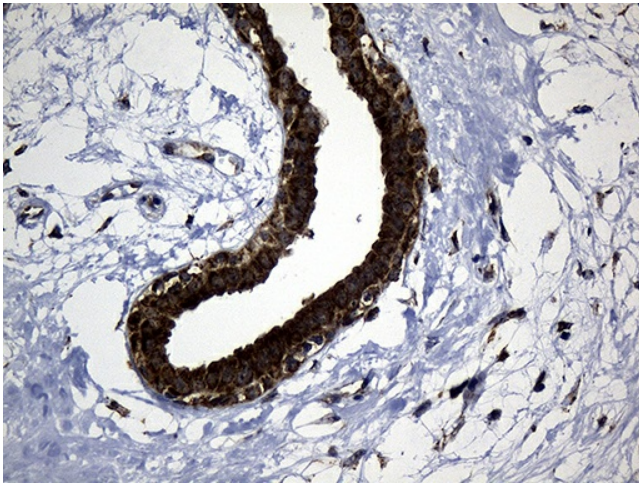
[View online »](#)

**Product images:**


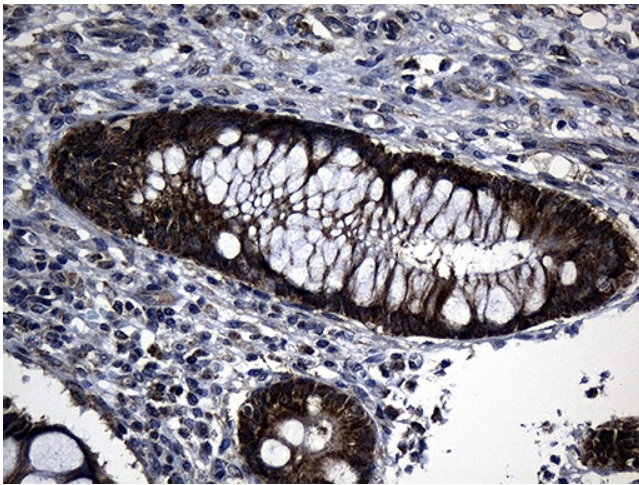
HEK293T cells were transfected with the pCMV6-ENTRY control (Cat# [PS100001], Left lane) or pCMV6-ENTRY EARS2 (Cat# [RC221871], Right lane) cDNA for 48 hrs and lysed. Equivalent amounts of cell lysates (5 ug per lane) were separated by SDS-PAGE and immunoblotted with anti-EARS2 (Cat# TA810522)(1:2000). Positive lysates [LY421237] (100ug) and [LC421237] (20ug) can be purchased separately from OriGene.



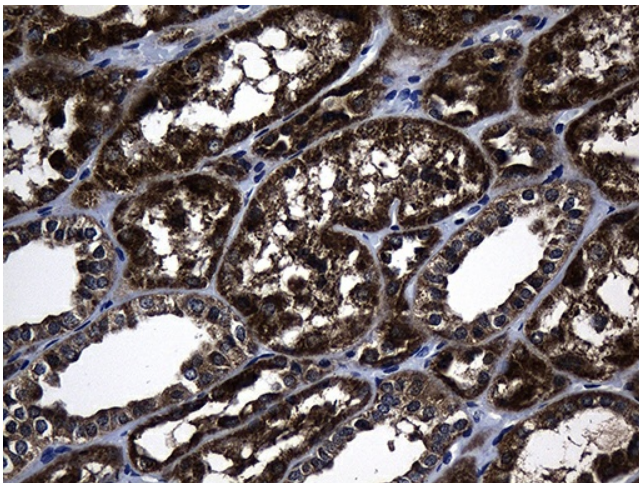
Western blot analysis of extracts (35ug) from 9 different cell lines by using anti-EARS2 monoclonal antibody (1:500).



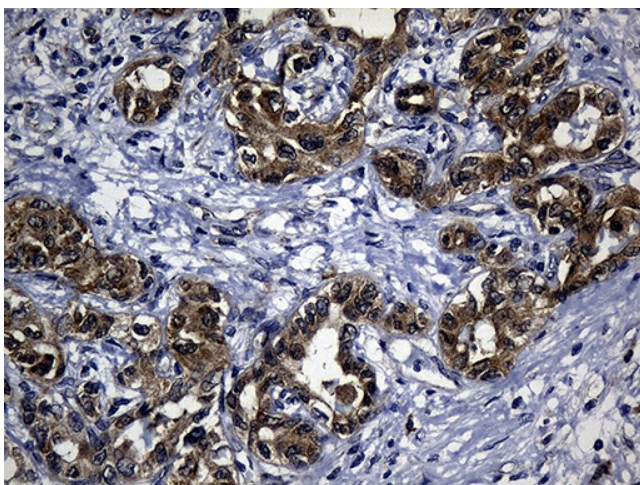
Immunohistochemical staining of paraffin-embedded Human breast tissue within the normal limits using anti-EARS2 mouse monoclonal antibody. (Heat-induced epitope retrieval by 1mM EDTA in 10mM Tris buffer (pH8.5) at 120°C for 3min, TA810522) (1:500)



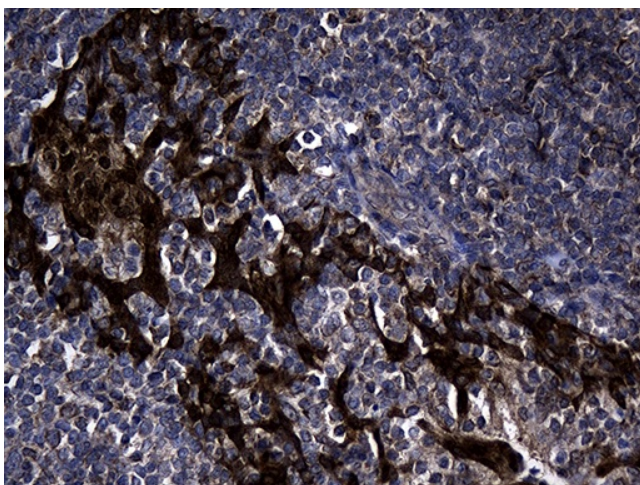
Immunohistochemical staining of paraffin-embedded Human colon tissue within the normal limits using anti-EARS2 mouse monoclonal antibody. (Heat-induced epitope retrieval by 1mM EDTA in 10mM Tris buffer (pH8.5) at 120°C for 3min, TA810522) (1:500)



Immunohistochemical staining of paraffin-embedded Human Kidney tissue within the normal limits using anti-EARS2 mouse monoclonal antibody. (Heat-induced epitope retrieval by 1mM EDTA in 10mM Tris buffer (pH8.5) at 120°C for 3min, TA810522) (1:500)



Immunohistochemical staining of paraffin-embedded Carcinoma of Human liver tissue using anti-EARS2 mouse monoclonal antibody. (Heat-induced epitope retrieval by 1mM EDTA in 10mM Tris buffer (pH8.5) at 120°C for 3min, TA810522) (1:500)



Immunohistochemical staining of paraffin-embedded Human tonsil within the normal limits using anti-EARS2 mouse monoclonal antibody. (Heat-induced epitope retrieval by 1mM EDTA in 10mM Tris buffer (pH8.5) at 120°C for 3min, TA810522) (1:500)