

## Product datasheet for **TA810334S**

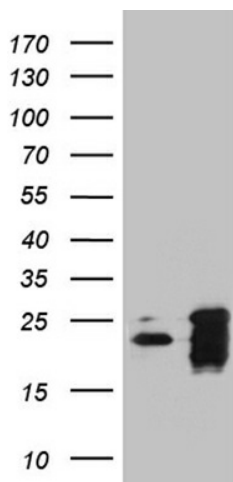
### **BAX Mouse Monoclonal Antibody [Clone ID: OTI2A1]**

#### **Product data:**

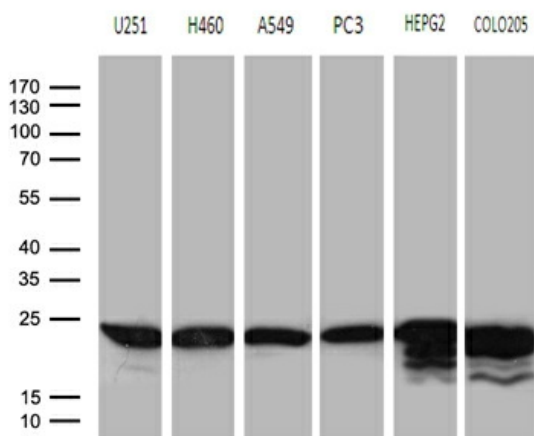
|                         |  |
|-------------------------|--|
| Product Type:           | Primary Antibodies   |
| Clone Name:             | OTI2A1   |
| Applications:           | IHC, WB  |
| Recommended Dilution:   | WB 1:500~2000, IHC 1:2000  |
| Reactivity:             | Human, Mouse, Rat  |
| Host:                   | Mouse  |
| Isotype:                | IgG2b  |
| Clonality:              | Monoclonal   |
| Immunogen:              | Human recombinant protein fragment corresponding to amino acids 1-172 of human BAX (NP_620116) produced in E.coli.   |
| Formulation:            | PBS (pH 7.3) containing 1% BSA, 50% glycerol and 0.02% sodium azide.   |
| Concentration:          | 1 mg/ml  |
| Purification:           | Purified from mouse ascites fluids or tissue culture supernatant by affinity chromatography (protein A/G)  |
| Conjugation:            | Unconjugated   |
| Storage:                | Store at -20°C as received.  |
| Stability:              | Stable for 12 months from date of receipt.   |
| Predicted Protein Size: | 21 kDa   |
| Gene Name:              | BCL2 associated X protein  |
| Database Link:          | <a href="#">NP_620116</a><br><a href="#">Entrez Gene 12028 Mouse</a> <a href="#">Entrez Gene 24887 Rat</a> <a href="#">Entrez Gene 581 Human</a><br><a href="#">Q07812</a>         |
| Synonyms:               | BCL2L4   |
| Protein Families:       | Druggable Genome, Transmembrane  |
| Protein Pathways:       | Amyotrophic lateral sclerosis (ALS), Apoptosis, Colorectal cancer, Huntington's disease, Neurotrophin signaling pathway, p53 signaling pathway, Pathways in cancer, Prion diseases |



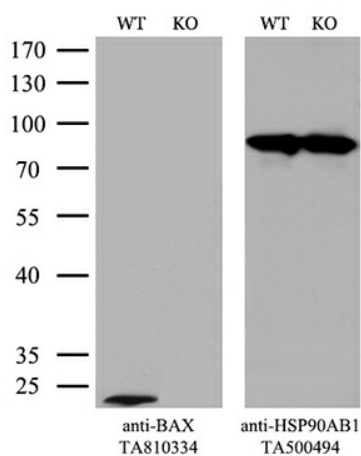
[View online »](#)

**Product images:**


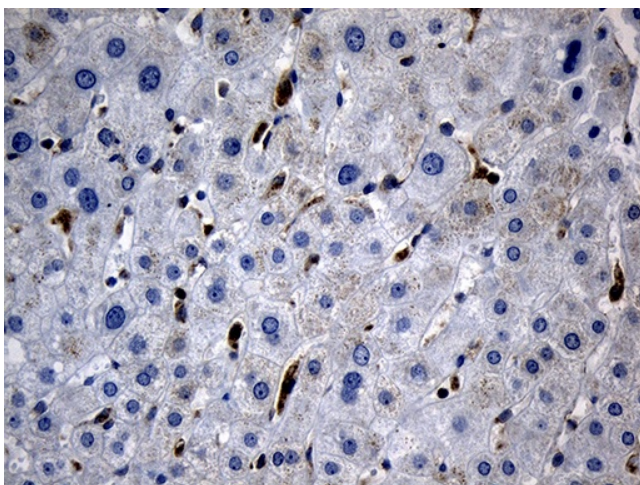
HEK293T cells were transfected with the pCMV6-ENTRY control (Cat# [PS100001], Left lane) or pCMV6-ENTRY BAX (Cat# [RC204369], Right lane) cDNA for 48 hrs and lysed. Equivalent amounts of cell lysates (5 ug per lane) were separated by SDS-PAGE and immunoblotted with anti-BAX (1:2000) (Cat# [TA810334]). Positive lysates [LY408504] (100ug) and [LC408504] (20ug) can be purchased separately from OriGene.



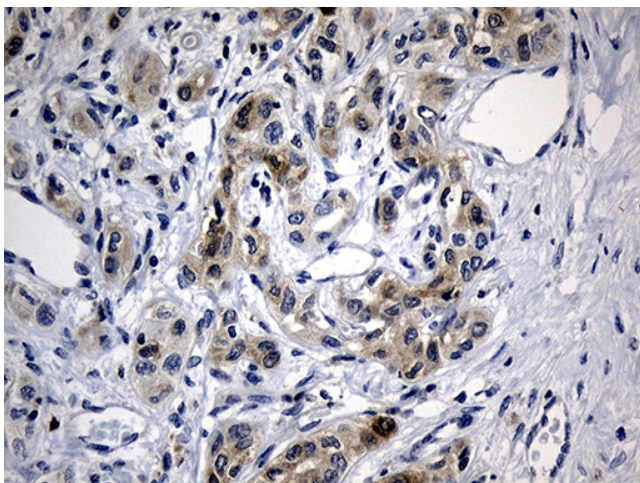
Western blot analysis of extracts (35ug) from 6 different cell lines by using anti-BAX monoclonal antibody (1:500).



Equivalent amounts of cell lysates (10 ug per lane) of wild-type HeLa cells (WT, Cat# LC810HELA) and BAX-Knockout HeLa cells (KO, Cat# [LC810020]) were separated by SDS-PAGE and immunoblotted with anti-BAX monoclonal antibody [TA810334]. Then the blotted membrane was stripped and reprobed with anti-HSP90AB1 antibody ([TA500494]) as a loading control (1:500).



Immunohistochemical staining of paraffin-embedded Human liver tissue within the normal limits using anti-BAX mouse monoclonal antibody. (Heat-induced epitope retrieval by 1mM EDTA in 10mM Tris buffer (pH8.5) at 120°C for 3min, [TA810334]) (1:2000)



Immunohistochemical staining of paraffin-embedded Carcinoma of Human liver tissue using anti-BAX mouse monoclonal antibody. (Heat-induced epitope retrieval by 1mM EDTA in 10mM Tris buffer (pH8.5) at 120°C for 3min, [TA810334]) (1:2000)