

Product datasheet for **TA810011**

NSD3 (WHSC1L1) Mouse Monoclonal Antibody [Clone ID: OTI6A12]

Product data:

Product Type:	Primary Antibodies
Clone Name:	OTI6A12
Applications:	IHC, WB
Recommended Dilution:	WB 1:500~2000, IHC 1:500
Reactivity:	Human
Host:	Mouse
Isotype:	IgG2b
Clonality:	Monoclonal
Immunogen:	Human recombinant protein fragment corresponding to amino acids 427-566 of human WHSC1L1(NP_060248) produced in E.coli.
Formulation:	PBS (pH 7.3) containing 1% BSA, 50% glycerol and 0.02% sodium azide.
Concentration:	1 mg/ml
Purification:	Purified from mouse ascites fluids or tissue culture supernatant by affinity chromatography (protein A/G)
Conjugation:	Unconjugated
Storage:	Store at -20°C as received.
Stability:	Stable for 12 months from date of receipt.
Predicted Protein Size:	72.4 kDa
Gene Name:	Wolf-Hirschhorn syndrome candidate 1-like 1
Database Link:	NP_060248 Entrez Gene 54904 Human Q9BZ95
Background:	This gene is related to the Wolf-Hirschhorn syndrome candidate-1 gene and encodes a protein with PWWP (proline-tryptophan-tryptophan-proline) domains. The function of the protein has not been determined. Two alternatively spliced variants have been described. [provided by RefSeq, Jul 2008]
Synonyms:	NSD3; pp14328

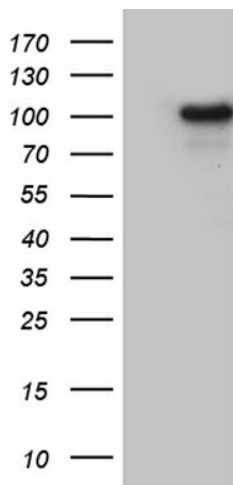


[View online »](#)

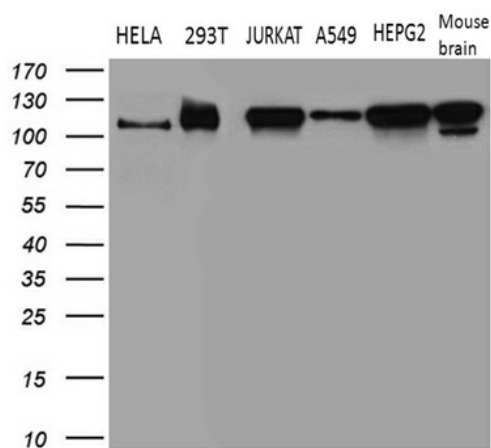
Protein Families: Druggable Genome, Transcription Factors

Protein Pathways: Lysine degradation

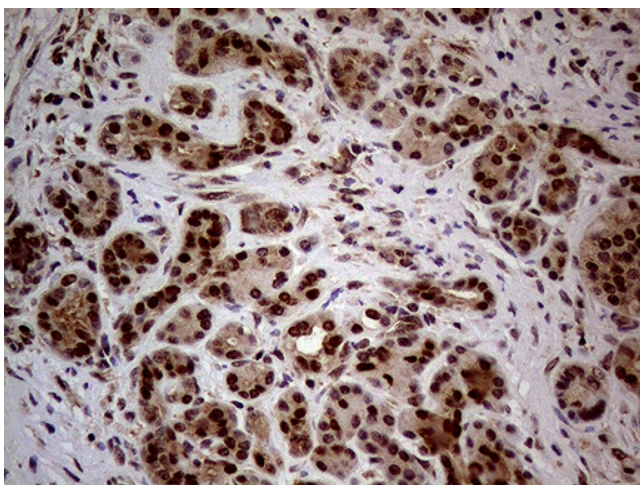
Product images:



HEK293T cells were transfected with the pCMV6-ENTRY control (Left lane) or pCMV6-ENTRY WHSC1L1 ([RC212790], Right lane) cDNA for 48 hrs and lysed. Equivalent amounts of cell lysates (5 ug per lane) were separated by SDS-PAGE and immunoblotted with anti-WHSC1L1 (1:2000). Positive lysates [LY413551] (100ug) and [LC413551] (20ug) can be purchased separately from OriGene.



Western blot analysis of extracts (35ug) from 5 different cell lines and 1 tissue lysate by using anti-WHSC1L1 monoclonal antibody (1:500).



Immunohistochemical staining of paraffin-embedded Human pancreas tissue within the normal limits using anti-WHSC1L1 mouse monoclonal antibody. (Heat-induced epitope retrieval by 1mM EDTA in 10mM Tris buffer (pH8.5) at 120°C for 3min, TA810011) (1:500)