

Product datasheet for **TA809790BM**

SMC1 (SMC1A) Mouse Monoclonal Antibody (HRP conjugated) [Clone ID: OTI11E1]

Product data:

Product Type:	Primary Antibodies
Clone Name:	OTI11E1
Applications:	IHC, WB
Recommended Dilution:	WB 1:500~2000, IHC 1:1000
Reactivity:	Human, Mouse, Rat
Host:	Mouse
Isotype:	IgG2b
Clonality:	Monoclonal
Immunogen:	Human recombinant protein fragment corresponding to amino acids 889-1016 of human SMC1A (NP_006297) produced in E.coli.
Formulation:	PBS (pH 7.3) containing 1% BSA, 50% glycerol.
Concentration:	0.5 mg/ml
Purification:	Purified from mouse ascites fluids or tissue culture supernatant by affinity chromatography (protein A/G)
Conjugation:	HRP
Storage:	Store at -20°C as received.
Stability:	Stable for 12 months from date of receipt.
Gene Name:	structural maintenance of chromosomes 1A
Database Link:	NP_006297 Entrez Gene 24061 Mouse Entrez Gene 63996 Rat Entrez Gene 8243 Human Q14683



[View online »](#)

Background:

Proper cohesion of sister chromatids is a prerequisite for the correct segregation of chromosomes during cell division. The cohesin multiprotein complex is required for sister chromatid cohesion. This complex is composed partly of two structural maintenance of chromosomes (SMC) proteins, SMC3 and either SMC1B or the protein encoded by this gene. Most of the cohesin complexes dissociate from the chromosomes before mitosis, although those complexes at the kinetochore remain. Therefore, the encoded protein is thought to be an important part of functional kinetochores. In addition, this protein interacts with BRCA1 and is phosphorylated by ATM, indicating a potential role for this protein in DNA repair. This gene, which belongs to the SMC gene family, is located in an area of the X-chromosome that escapes X inactivation. Mutations in this gene result in Cornelia de Lange syndrome. Alternative splicing results in multiple transcript variants encoding different isoforms. [provided by RefSeq, Jul 2013]

Synonyms:

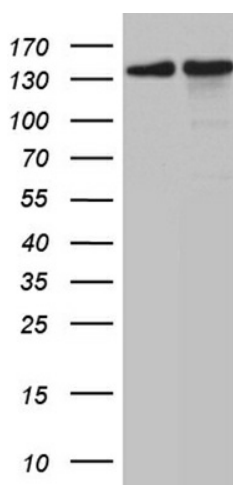
CDLS2; DXS423E; SB1.8; SMC1; SMC1alpha; SMC1L1; SMCB

Protein Families:

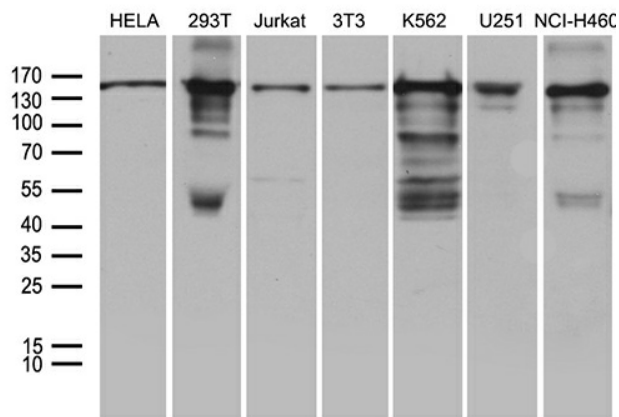
Druggable Genome

Protein Pathways:

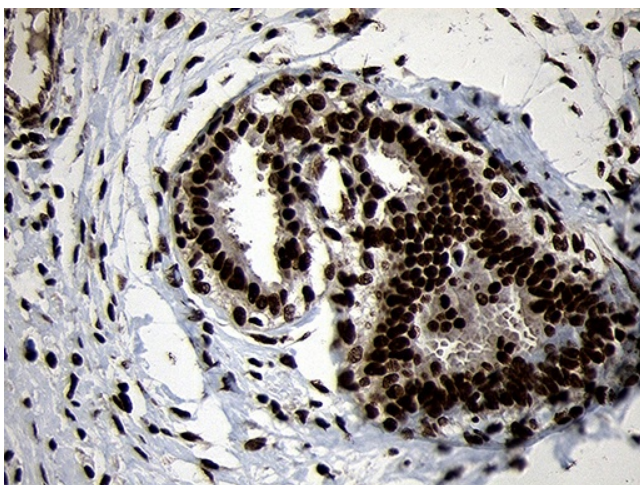
Cell cycle, Oocyte meiosis

Product images:

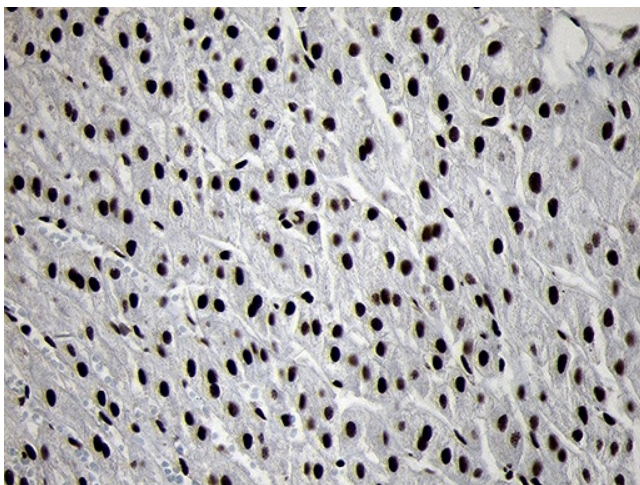
HEK293T cells were transfected with the pCMV6-ENTRY control (Left lane) or pCMV6-ENTRY SMC1A ([RC215888], Right lane) cDNA for 48 hrs and lysed. Equivalent amounts of cell lysates (5 ug per lane) were separated by SDS-PAGE and immunoblotted with anti-SMC1A (1:2000). Positive lysates [LY401901] (100ug) and [LC401901] (20ug) can be purchased separately from OriGene.



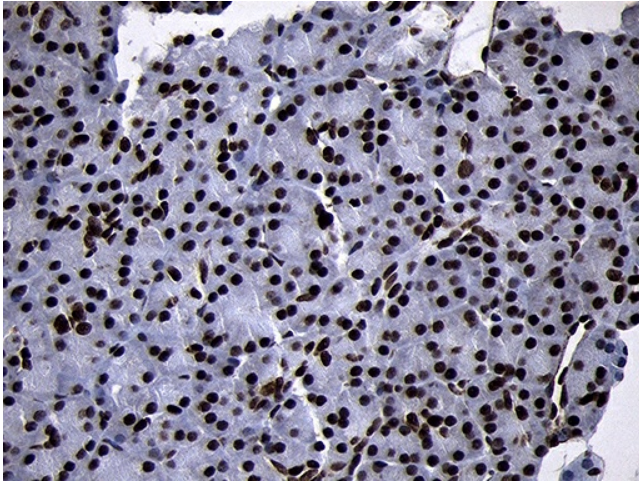
Western blot analysis of extracts (35ug) from 7 different cell lines by using anti-SMC1A monoclonal antibody (1:500).



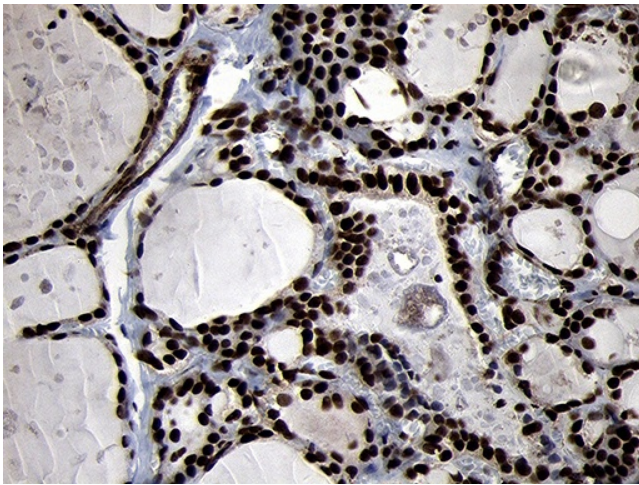
Immunohistochemical staining of paraffin-embedded Human breast tissue within the normal limits using anti-SMC1A mouse monoclonal antibody. (Heat-induced epitope retrieval by 1mM EDTA in 10mM Tris buffer (pH8.5) at 120°C for 3min, [TA809790]) (1:1000)



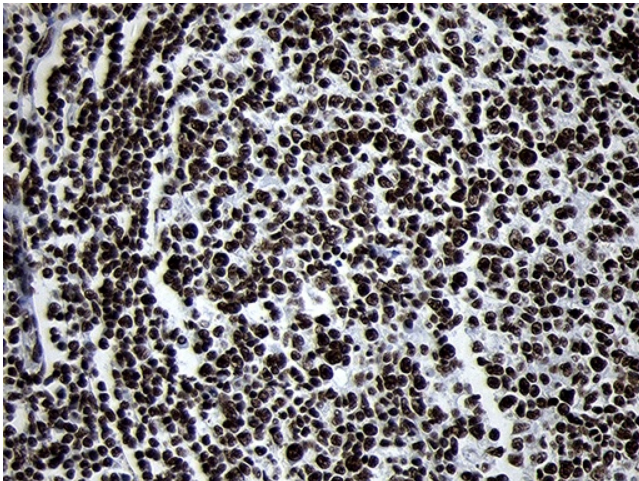
Immunohistochemical staining of paraffin-embedded Carcinoma of Human liver tissue using anti-SMC1A mouse monoclonal antibody. (Heat-induced epitope retrieval by 1mM EDTA in 10mM Tris buffer (pH8.5) at 120°C for 3min, [TA809790]) (1:1000)



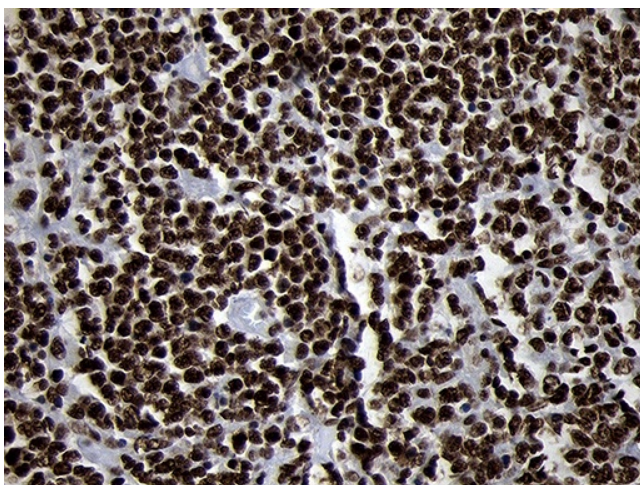
Immunohistochemical staining of paraffin-embedded Human pancreas tissue within the normal limits using anti-SMC1A mouse monoclonal antibody. (Heat-induced epitope retrieval by 1mM EDTA in 10mM Tris buffer (pH8.5) at 120°C for 3min, [TA809790]) (1:1000)



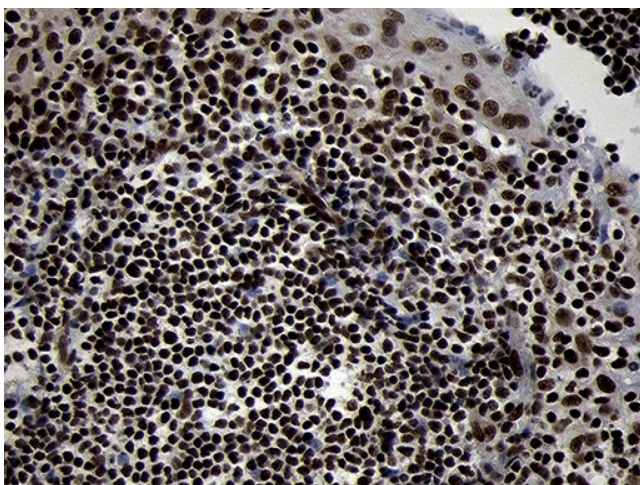
Immunohistochemical staining of paraffin-embedded Human thyroid tissue within the normal limits using anti-SMC1A mouse monoclonal antibody. (Heat-induced epitope retrieval by 1mM EDTA in 10mM Tris buffer (pH8.5) at 120°C for 3min, [TA809790]) (1:1000)



Immunohistochemical staining of paraffin-embedded Human lymph node tissue within the normal limits using anti-SMC1A mouse monoclonal antibody. (Heat-induced epitope retrieval by 1mM EDTA in 10mM Tris buffer (pH8.5) at 120°C for 3min, [TA809790]) (1:1000)



Immunohistochemical staining of paraffin-embedded Human lymphoma tissue using anti-SMC1A mouse monoclonal antibody. (Heat-induced epitope retrieval by 1mM EDTA in 10mM Tris buffer (pH8.5) at 120°C for 3min, [TA809790]) (1:1000)



Immunohistochemical staining of paraffin-embedded Human tonsil within the normal limits using anti-SMC1A mouse monoclonal antibody. (Heat-induced epitope retrieval by 1mM EDTA in 10mM Tris buffer (pH8.5) at 120°C for 3min, [TA809790]) (1:1000)