

Product datasheet for **TA809427S**

XRN2 Mouse Monoclonal Antibody [Clone ID: OTI5F4]

Product data:

Product Type:	Primary Antibodies
Clone Name:	OTI5F4
Applications:	IHC, WB
Recommended Dilution:	WB 1:500~2000, IHC 1:2000
Reactivity:	Human, Mouse, Rat
Host:	Mouse
Isotype:	IgG2b
Clonality:	Monoclonal
Immunogen:	Human recombinant protein fragment corresponding to amino acids 677-779 of human XRN2(NP_036387) produced in E.coli.
Formulation:	PBS (pH 7.3) containing 1% BSA, 50% glycerol and 0.02% sodium azide.
Concentration:	1 mg/ml
Purification:	Purified from mouse ascites fluids or tissue culture supernatant by affinity chromatography (protein A/G)
Conjugation:	Unconjugated
Storage:	Store at -20°C as received.
Stability:	Stable for 12 months from date of receipt.
Predicted Protein Size:	108.4 kDa
Gene Name:	5'-3' exoribonuclease 2
Database Link:	NP_036387 Entrez Gene 24128 Mouse Entrez Gene 22803 Human Q9H0D6
Background:	This gene shares similarity with the mouse Dhml and the yeast dhp1 gene. The yeast gene is involved in homologous recombination and RNA metabolism, such as RNA synthesis and RNA trafficking. Complementation studies show that Dhml has a similar function in mouse as dhp1. The function of the human gene has not yet been determined. Transcript variants encoding different isoforms have been noted for this gene; however, their full-length nature is not known. [provided by RefSeq, Jul 2008]

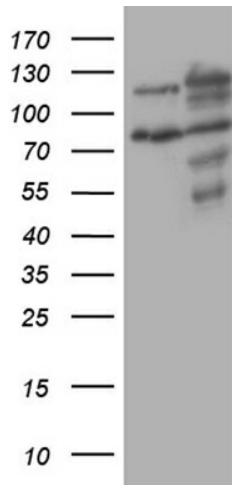


[View online »](#)

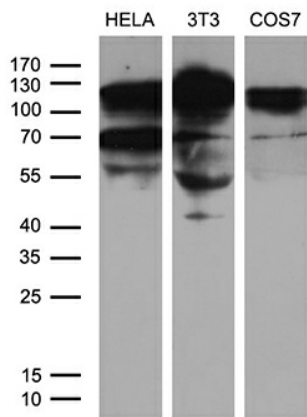
Synonyms: 5'-3' exoribonuclease 2; Dhm1-like protein (mouse homolog); OTTHUMP00000030403

Protein Pathways: RNA degradation

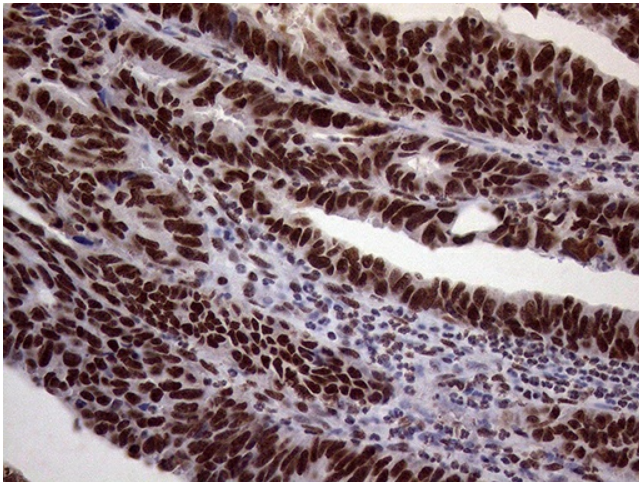
Product images:



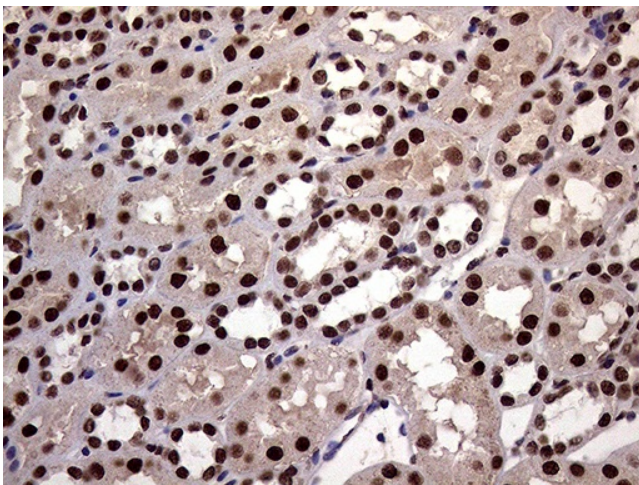
HEK293T cells were transfected with the pCMV6-ENTRY control (Cat# [PS100001], Left lane) or pCMV6-ENTRY XRN2 (Cat# [RC223980], Right lane) cDNA for 48 hrs and lysed. Equivalent amounts of cell lysates (5 ug per lane) were separated by SDS-PAGE and immunoblotted with anti-XRN2 (Cat# [TA809427])(1:2000). Positive lysates [LY415881] (100ug) and [LC415881] (20ug) can be purchased separately from OriGene.



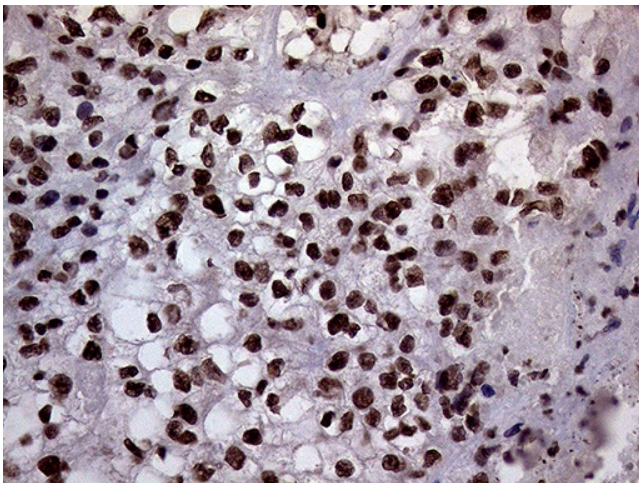
Western blot analysis of extracts (35ug) from 3 different cell lines by using anti-XRN2 monoclonal antibody (1:500).



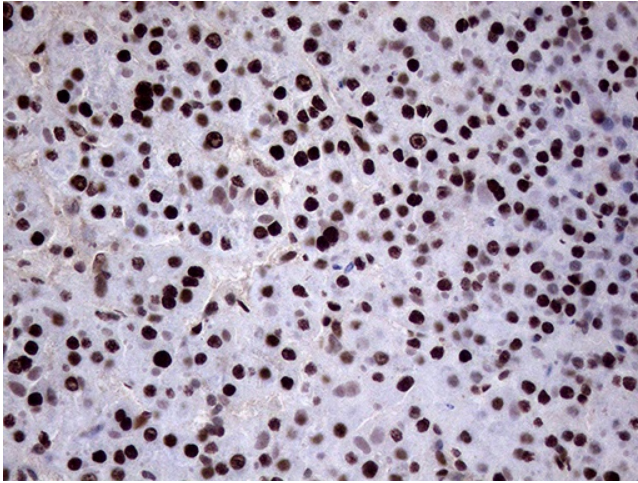
Immunohistochemical staining of paraffin-embedded Adenocarcinoma of Human colon tissue using anti-XRN2 mouse monoclonal antibody. (Heat-induced epitope retrieval by 1mM EDTA in 10mM Tris buffer (pH8.5) at 120°C for 3min, [TA809427]) (1:2000)



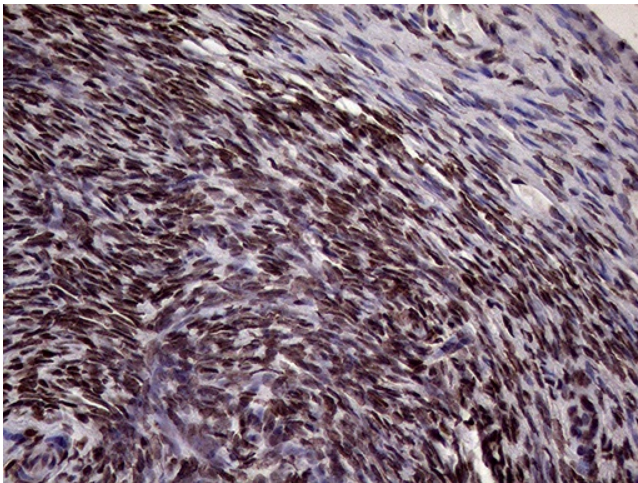
Immunohistochemical staining of paraffin-embedded Human Kidney tissue within the normal limits using anti-XRN2 mouse monoclonal antibody. (Heat-induced epitope retrieval by 1mM EDTA in 10mM Tris buffer (pH8.5) at 120°C for 3min, [TA809427]) (1:2000)



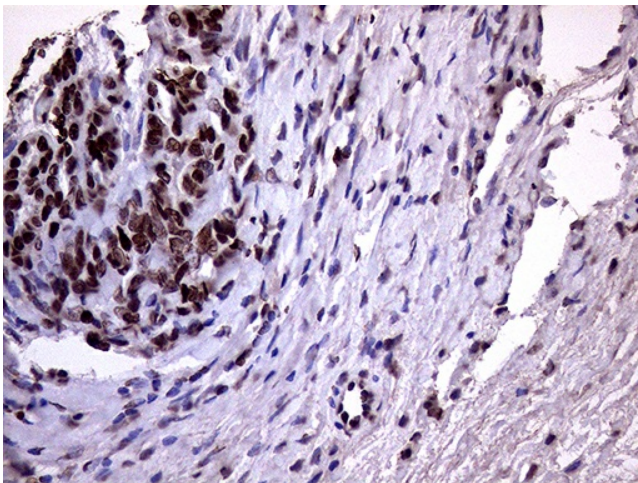
Immunohistochemical staining of paraffin-embedded Carcinoma of Human kidney tissue using anti-XRN2 mouse monoclonal antibody. (Heat-induced epitope retrieval by 1mM EDTA in 10mM Tris buffer (pH8.5) at 120°C for 3min, [TA809427]) (1:2000)



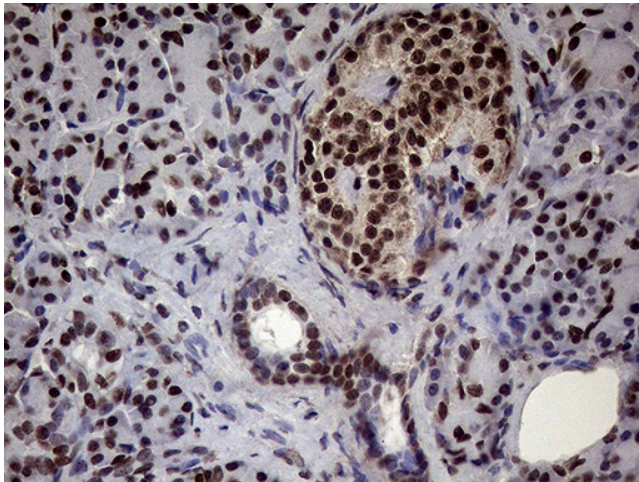
Immunohistochemical staining of paraffin-embedded Carcinoma of Human liver tissue using anti-XRN2 mouse monoclonal antibody. (Heat-induced epitope retrieval by 1mM EDTA in 10mM Tris buffer (pH8.5) at 120°C for 3min, [TA809427]) (1:2000)



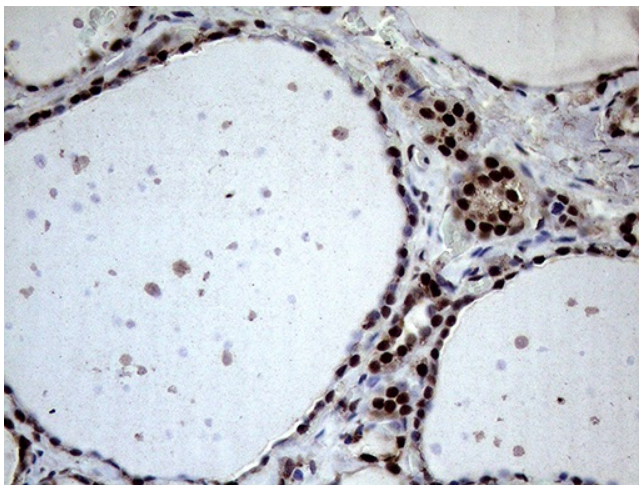
Immunohistochemical staining of paraffin-embedded Human Ovary tissue within the normal limits using anti-XRN2 mouse monoclonal antibody. (Heat-induced epitope retrieval by 1mM EDTA in 10mM Tris buffer (pH8.5) at 120°C for 3min, [TA809427]) (1:2000)



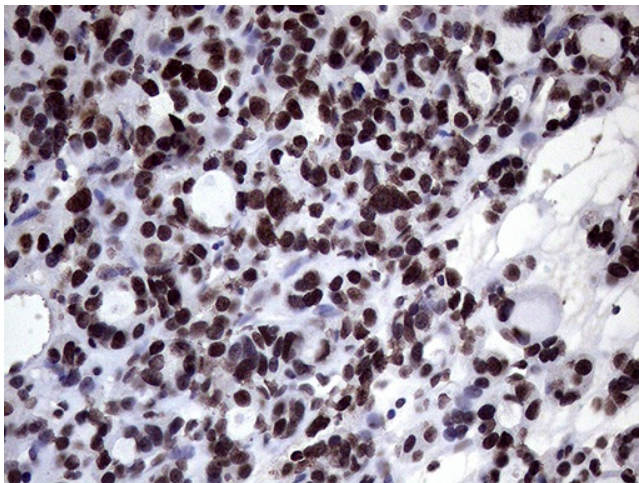
Immunohistochemical staining of paraffin-embedded Adenocarcinoma of Human ovary tissue using anti-XRN2 mouse monoclonal antibody. (Heat-induced epitope retrieval by 1mM EDTA in 10mM Tris buffer (pH8.5) at 120°C for 3min, [TA809427]) (1:2000)



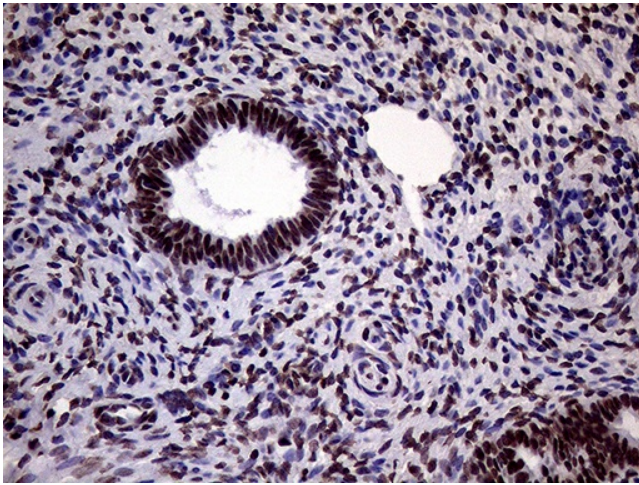
Immunohistochemical staining of paraffin-embedded Human pancreas tissue within the normal limits using anti-XRN2 mouse monoclonal antibody. (Heat-induced epitope retrieval by 1mM EDTA in 10mM Tris buffer (pH8.5) at 120°C for 3min, [TA809427]) (1:2000)



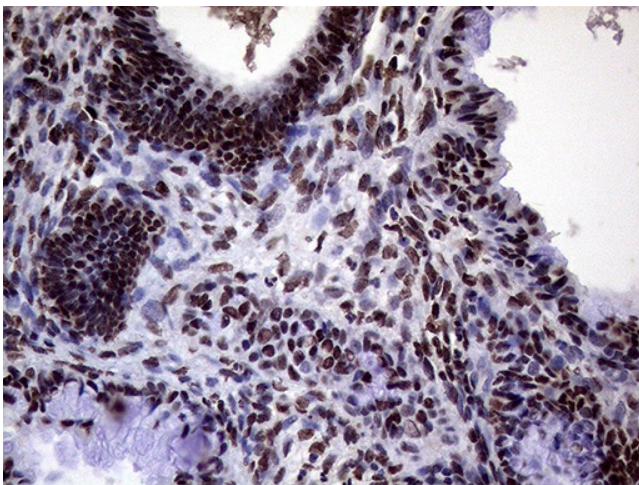
Immunohistochemical staining of paraffin-embedded Human thyroid tissue within the normal limits using anti-XRN2 mouse monoclonal antibody. (Heat-induced epitope retrieval by 1mM EDTA in 10mM Tris buffer (pH8.5) at 120°C for 3min, [TA809427]) (1:2000)



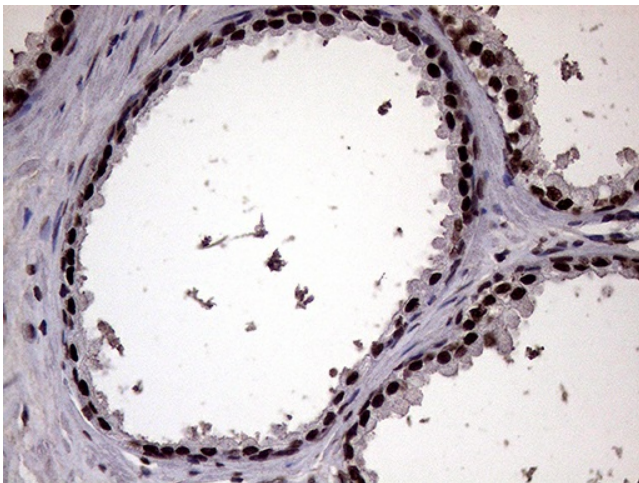
Immunohistochemical staining of paraffin-embedded Carcinoma of Human thyroid tissue using anti-XRN2 mouse monoclonal antibody. (Heat-induced epitope retrieval by 1mM EDTA in 10mM Tris buffer (pH8.5) at 120°C for 3min, [TA809427]) (1:2000)



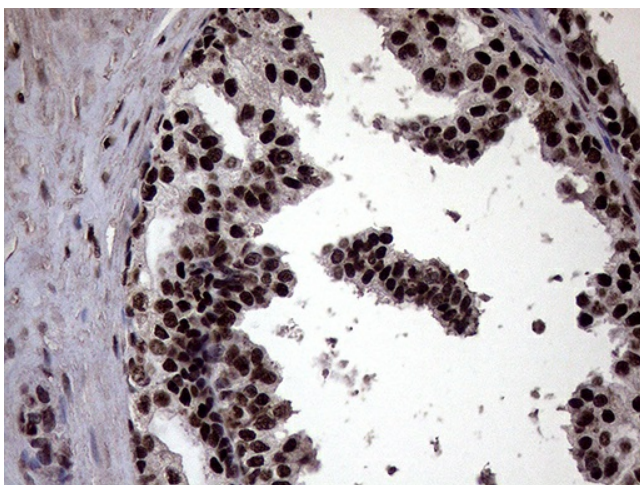
Immunohistochemical staining of paraffin-embedded Human endometrium tissue within the normal limits using anti-XRN2 mouse monoclonal antibody. (Heat-induced epitope retrieval by 1mM EDTA in 10mM Tris buffer (pH8.5) at 120°C for 3min, [TA809427]) (1:2000)



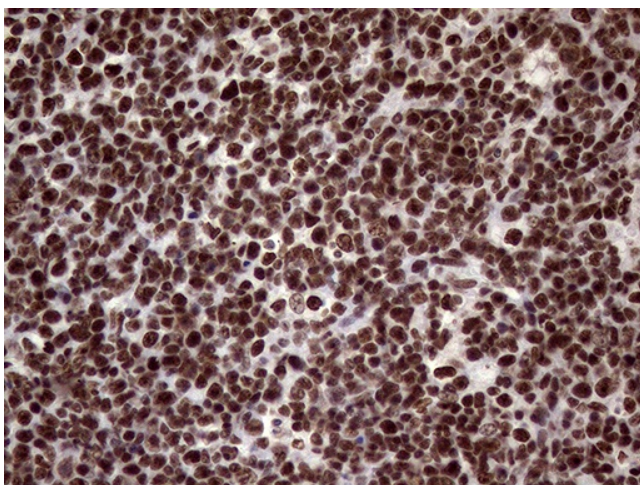
Immunohistochemical staining of paraffin-embedded Adenocarcinoma of Human endometrium tissue using anti-XRN2 mouse monoclonal antibody. (Heat-induced epitope retrieval by 1mM EDTA in 10mM Tris buffer (pH8.5) at 120°C for 3min, [TA809427]) (1:2000)



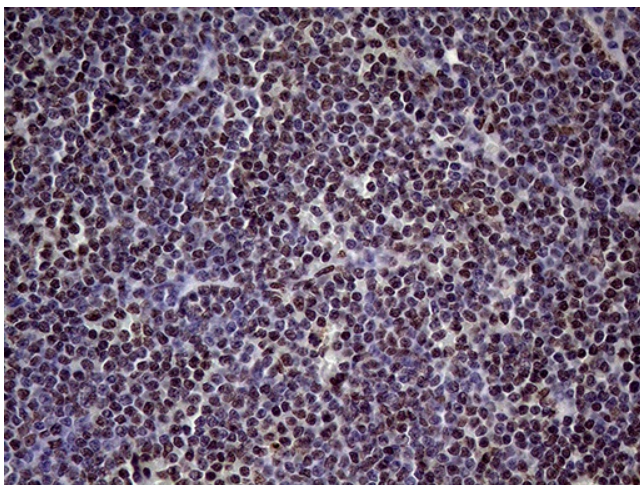
Immunohistochemical staining of paraffin-embedded Human prostate tissue within the normal limits using anti-XRN2 mouse monoclonal antibody. (Heat-induced epitope retrieval by 1mM EDTA in 10mM Tris buffer (pH8.5) at 120°C for 3min, [TA809427]) (1:2000)



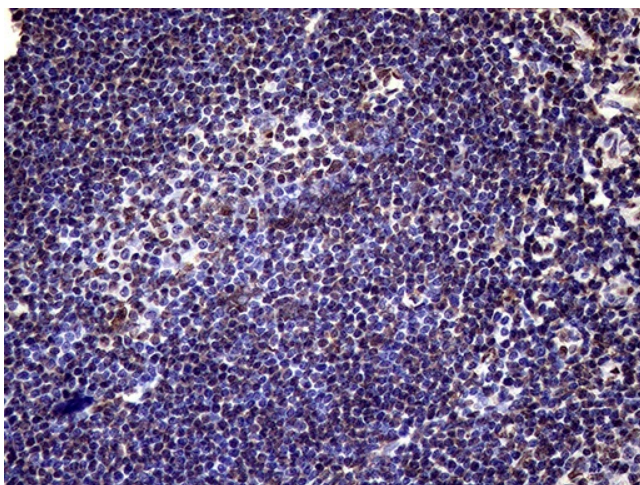
Immunohistochemical staining of paraffin-embedded Carcinoma of Human prostate tissue using anti-XRN2 mouse monoclonal antibody. (Heat-induced epitope retrieval by 1mM EDTA in 10mM Tris buffer (pH8.5) at 120°C for 3min, [TA809427]) (1:2000)



Immunohistochemical staining of paraffin-embedded Human lymph node tissue within the normal limits using anti-XRN2 mouse monoclonal antibody. (Heat-induced epitope retrieval by 1mM EDTA in 10mM Tris buffer (pH8.5) at 120°C for 3min, [TA809427]) (1:2000)



Immunohistochemical staining of paraffin-embedded Human lymphoma tissue using anti-XRN2 mouse monoclonal antibody. (Heat-induced epitope retrieval by 1mM EDTA in 10mM Tris buffer (pH8.5) at 120°C for 3min, [TA809427]) (1:2000)



Immunohistochemical staining of paraffin-embedded Human tonsil within the normal limits using anti-XRN2 mouse monoclonal antibody. (Heat-induced epitope retrieval by 1mM EDTA in 10mM Tris buffer (pH8.5) at 120°C for 3min, [TA809427]) (1:2000)