

Product datasheet for **TA808709**

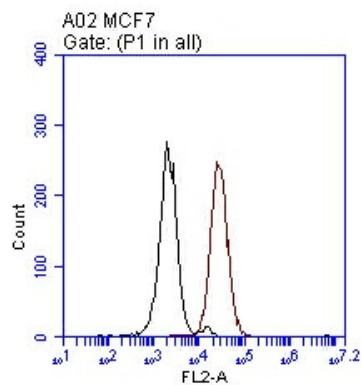
Her2 (ERBB2) Mouse Monoclonal Antibody [Clone ID: 15C4-8]

Product data:

| | |
|-----------------------|--|
| Product Type: | Primary Antibodies |
| Clone Name: | 15C4-8 |
| Applications: | FC |
| Recommended Dilution: | FC: 1:50 |
| Reactivity: | Human, Mouse, Rat |
| Host: | Mouse |
| Isotype: | IgG1, kappa |
| Clonality: | Monoclonal |
| Immunogen: | HER2 extracellular domain (aa 23-652) expressed in HEK293 cells with a C-terminal DDK tag |
| Formulation: | PBS with 50% glycerol, 1% BSA and 0.02% sodium azide |
| Concentration: | 0.5 mg/ml |
| Purification: | Purified from mouse ascites fluids or tissue culture supernatant by affinity chromatography (protein A/G) |
| Conjugation: | Unconjugated |
| Storage: | Store at -20°C as received. |
| Stability: | Stable for 12 months from date of receipt. |
| Gene Name: | erb-b2 receptor tyrosine kinase 2 |
| Database Link: | NP_004439 Entrez Gene 13866 Mouse Entrez Gene 24337 Rat Entrez Gene 2064 Human P04626 |
| Synonyms: | CD340; HER-2; HER-2/neu; HER2; MLN 19; NEU; NGL; TKR1 |
| Protein Families: | Druggable Genome, Protein Kinase, Transmembrane |
| Protein Pathways: | Adherens junction, Bladder cancer, Calcium signaling pathway, Endometrial cancer, ErbB signaling pathway, Focal adhesion, Non-small cell lung cancer, Pancreatic cancer, Pathways in cancer, Prostate cancer |



[View online »](#)

Product images:

Flow cytometric analysis of live MCF7 cells (non-fixed, non-permeabilized), using anti-HER2/ERBB2 antibody (TA808709 at 1:50, Brown), compared to IgG1 isotype control (Black).