

## Product datasheet for **TA808476S**

### AMACR Mouse Monoclonal Antibody [Clone ID: OTI3E10]

#### Product data:

Product Type:	Primary Antibodies
Clone Name:	OTI3E10
Applications:	IHC, WB
Recommended Dilution:	IHC 1:150
Reactivity:	Human
Host:	Mouse
Isotype:	IgG1
Clonality:	Monoclonal
Immunogen:	Full length human recombinant protein of human AMACR (NP_055139) produced in HEK293T cell.
Formulation:	PBS (pH 7.3) containing 1% BSA, 50% glycerol and 0.02% sodium azide.
Concentration:	1 mg/ml
Purification:	Purified from mouse ascites fluids or tissue culture supernatant by affinity chromatography (protein A/G)
Conjugation:	Unconjugated
Storage:	Store at -20°C as received.
Stability:	Stable for 12 months from date of receipt.
Predicted Protein Size:	42.2 kDa
Gene Name:	alpha-methylacyl-CoA racemase
Database Link:	<a href="#">NP_055139</a> <a href="#">Entrez Gene 23600 Human</a> <a href="#">Q9UHK6</a>



[View online »](#)

**Background:**

This gene encodes a racemase. The encoded enzyme interconverts pristanoyl-CoA and C27-bile acylCoAs between their (R)- and (S)-stereoisomers. The conversion to the (S)-stereoisomers is necessary for degradation of these substrates by peroxisomal beta-oxidation. Encoded proteins from this locus localize to both mitochondria and peroxisomes. Mutations in this gene may be associated with adult-onset sensorimotor neuropathy, pigmentary retinopathy, and adrenomyeloneuropathy due to defects in bile acid synthesis. Alternatively spliced transcript variants have been described. Read-through transcription also exists between this gene and the upstream neighboring C1QTNF3 (C1q and tumor necrosis factor related protein 3) gene. [provided by RefSeq, Mar 2011]

**Synonyms:**

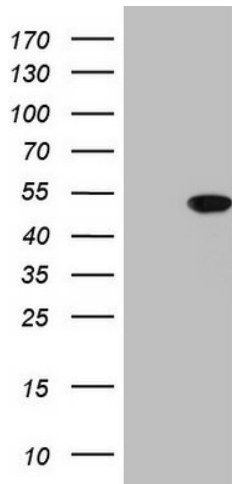
AMACRD; CBAS4; RACE; RM

**Protein Families:**

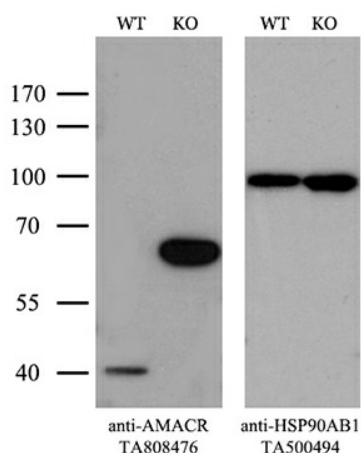
Druggable Genome

**Protein Pathways:**

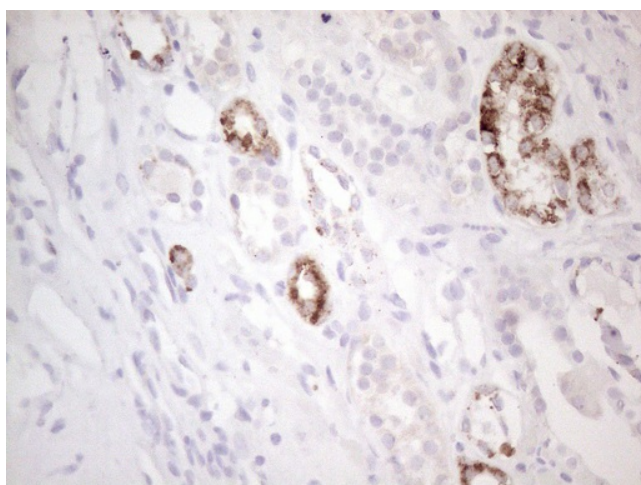
Metabolic pathways, Primary bile acid biosynthesis

**Product images:**

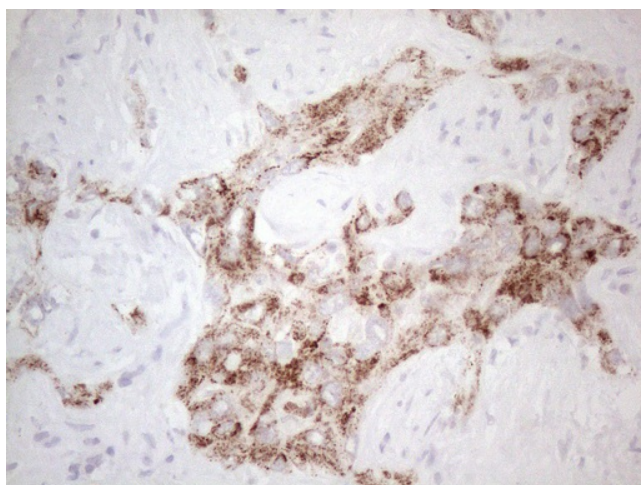
HEK293T cells were transfected with the pCMV6-ENTRY control (Left lane) or pCMV6-ENTRY AMACR ([RC213437], Right lane) cDNA for 48 hrs and lysed. Equivalent amounts of cell lysates (5 ug per lane) were separated by SDS-PAGE and immunoblotted with anti-AMACR. Positive lysates [LY402314] (100ug) and [LC402314] (20ug) can be purchased separately from OriGene.



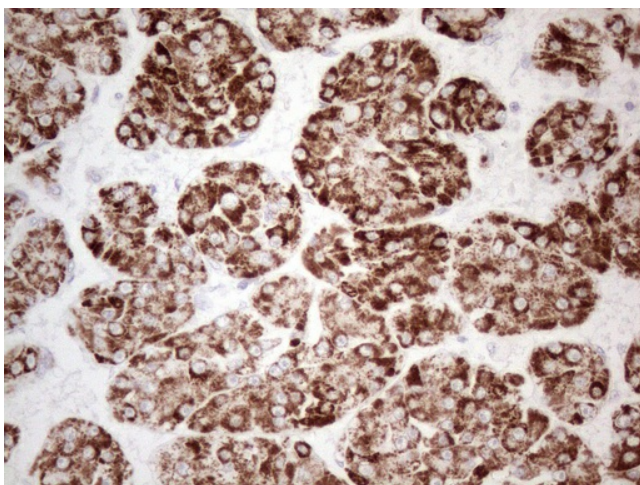
Equivalent amounts of cell lysates (10 ug per lane) of wild-type HeLa cells (WT, Cat# LC810HELA) and AMACR-Knockout HeLa cells (KO, Cat# [LC810338]) were separated by SDS-PAGE and immunoblotted with anti-AMACR monoclonal antibody [TA808476]. Then the blotted membrane was stripped and reprobed with anti-HSP90AB1 antibody ([TA500494]) as a loading control (1:500).



Immunohistochemical staining of paraffin-embedded Human Kidney tissue within the normal limits using anti-AMACR mouse monoclonal antibody. (Heat-induced epitope retrieval by 1mM EDTA in 10mM Tris buffer (pH8.5) at 120°C for 3min, [TA808476]) (1:150)



Immunohistochemical staining of paraffin-embedded Human liver tissue within the normal limits using anti-AMACR mouse monoclonal antibody. (Heat-induced epitope retrieval by 1mM EDTA in 10mM Tris buffer (pH8.5) at 120°C for 3min, [TA808476]) (1:150)



Immunohistochemical staining of paraffin-embedded Carcinoma of Human liver tissue using anti-AMACR mouse monoclonal antibody. (Heat-induced epitope retrieval by 1mM EDTA in 10mM Tris buffer (pH8.5) at 120°C for 3min, [TA808476]) (1:150)