

## Product datasheet for **TA808103**

### SDHB Mouse Monoclonal Antibody [Clone ID: OTI2A1]

#### Product data:

Product Type:	Primary Antibodies
Clone Name:	OTI2A1
Applications:	IHC, WB
Recommended Dilution:	WB 1:500, IHC 1:150
Reactivity:	Human, Mouse, Rat
Host:	Mouse
Isotype:	IgG1
Clonality:	Monoclonal
Immunogen:	Full length human recombinant protein of human SDHB(NP_002991) produced in E.coli.
Formulation:	PBS (pH 7.3) containing 1% BSA, 50% glycerol and 0.02% sodium azide.
Concentration:	1 mg/ml
Purification:	Purified from mouse ascites fluids or tissue culture supernatant by affinity chromatography (protein A/G)
Conjugation:	Unconjugated
Storage:	Store at -20°C as received.
Stability:	Stable for 12 months from date of receipt.
Predicted Protein Size:	28.8 kDa
Gene Name:	succinate dehydrogenase complex iron sulfur subunit B
Database Link:	<a href="#">NP_002991</a> <a href="#">Entrez Gene 67680 Mouse</a> <a href="#">Entrez Gene 298596 Rat</a> <a href="#">Entrez Gene 6390 Human</a> <a href="#">P21912</a>

**Background:** Complex II of the respiratory chain, which is specifically involved in the oxidation of succinate, carries electrons from FADH to CoQ. The complex is composed of four nuclear-encoded subunits and is localized in the mitochondrial inner membrane. The iron-sulfur subunit is highly conserved and contains three cysteine-rich clusters which may comprise the iron-sulfur centers of the enzyme. Sporadic and familial mutations in this gene result in paragangliomas and pheochromocytoma, and support a link between mitochondrial dysfunction and tumorigenesis. [provided by RefSeq, Jul 2008]



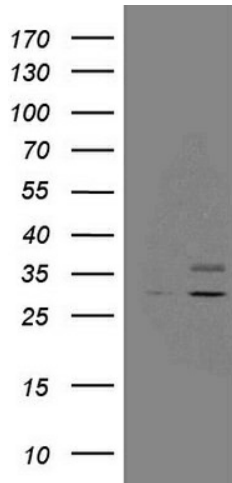
[View online »](#)

**Synonyms:** CWS2; IP; MC2DN4; PGL4; SDH; SDH1; SDH2; SDHIP

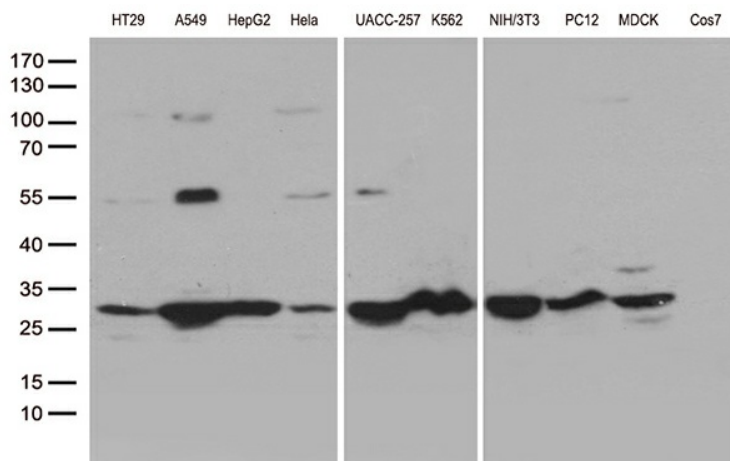
**Protein Families:** Druggable Genome

**Protein Pathways:** Alzheimer's disease, Citrate cycle (TCA cycle), Huntington's disease, Metabolic pathways, Oxidative phosphorylation, Parkinson's disease

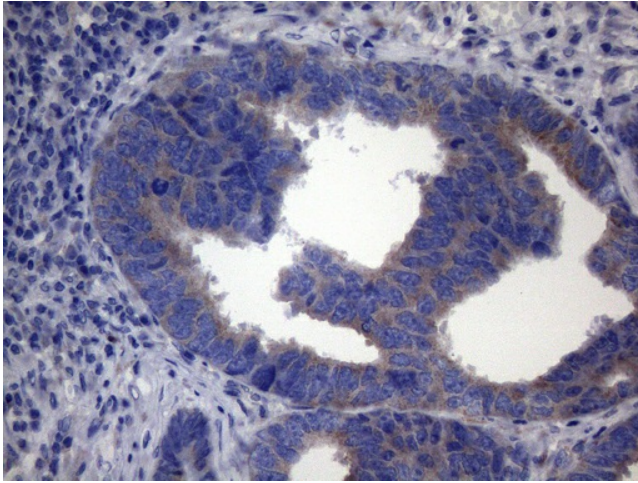
**Product images:**



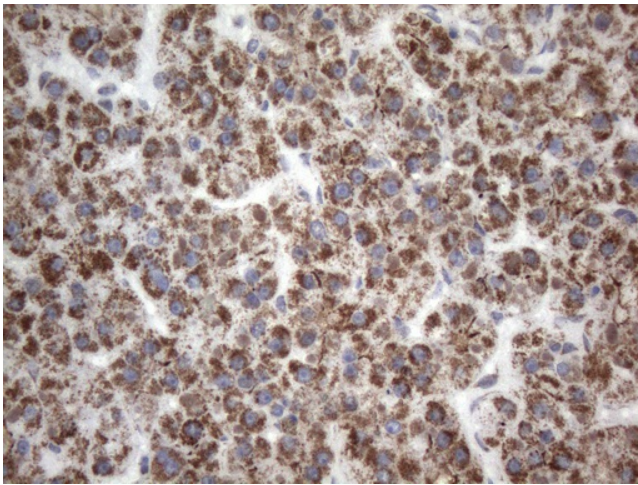
HEK293T cells were transfected with the pCMV6-ENTRY control (Left lane) or pCMV6-ENTRY SDHB ([RC203182], Right lane) cDNA for 48 hrs and lysed. Equivalent amounts of cell lysates (5 ug per lane) were separated by SDS-PAGE and immunoblotted with anti-SDHB (1:500). Positive lysates [LY401052] (100ug) and [LC401052] (20ug) can be purchased separately from OriGene.



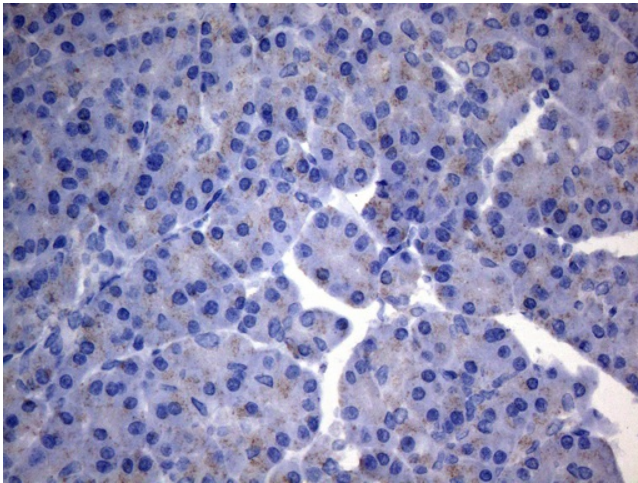
Western blot analysis of extracts (35ug) from 10 different cell lines by using anti-SDHB monoclonal antibody. 1:500



Immunohistochemical staining of paraffin-embedded Adenocarcinoma of Human colon tissue using anti-SDHB mouse monoclonal antibody. (Heat-induced epitope retrieval by 1mM EDTA in 10mM Tris buffer (pH8.5) at 120°C for 3min, TA808103) (1:150)



Immunohistochemical staining of paraffin-embedded Carcinoma of Human liver tissue using anti-SDHB mouse monoclonal antibody. (Heat-induced epitope retrieval by 1mM EDTA in 10mM Tris buffer (pH8.5) at 120°C for 3min, TA808103) (1:150)



Immunohistochemical staining of paraffin-embedded Human pancreas tissue within the normal limits using anti-SDHB mouse monoclonal antibody. (Heat-induced epitope retrieval by 1mM EDTA in 10mM Tris buffer (pH8.5) at 120°C for 3min, TA808103) (1:150)