

## Product datasheet for **TA807223**

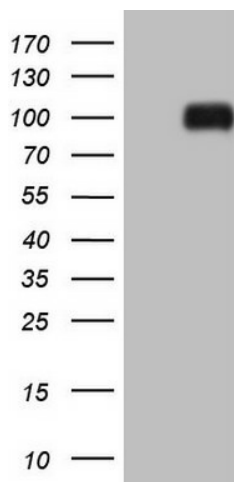
### HGF Mouse Monoclonal Antibody [Clone ID: OTI3F2]

#### Product data:

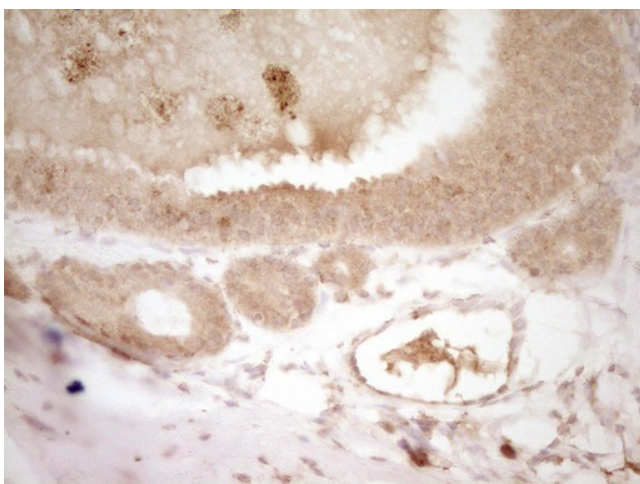
Product Type:	Primary Antibodies
Clone Name:	OTI3F2
Applications:	IHC, WB
Recommended Dilution:	WB 1:2000, IHC 1:150
Reactivity:	Human, Mouse, Rat
Host:	Mouse
Isotype:	IgG1
Clonality:	Monoclonal
Immunogen:	Human recombinant protein fragment corresponding to amino acids 200-494 of human HGF(NP_000592) produced in E.coli.
Formulation:	PBS (pH 7.3) containing 1% BSA, 50% glycerol and 0.02% sodium azide.
Concentration:	1 mg/ml
Purification:	Purified from mouse ascites fluids or tissue culture supernatant by affinity chromatography (protein A/G)
Conjugation:	Unconjugated
Storage:	Store at -20°C as received.
Stability:	Stable for 12 months from date of receipt.
Predicted Protein Size:	79.6 kDa
Gene Name:	hepatocyte growth factor
Database Link:	<a href="#">NP_000592</a> <a href="#">Entrez Gene 15234 Mouse</a> <a href="#">Entrez Gene 24446 Rat</a> <a href="#">Entrez Gene 3082 Human</a> <a href="#">P14210</a>
Synonyms:	DFNB39; F-TCF; HGFB; HPTA; SF
Protein Families:	Adult stem cells, Druggable Genome, ES Cell Differentiation/IPS, Protease, Transmembrane
Protein Pathways:	Cytokine-cytokine receptor interaction, Focal adhesion, Melanoma, Pathways in cancer, Renal cell carcinoma



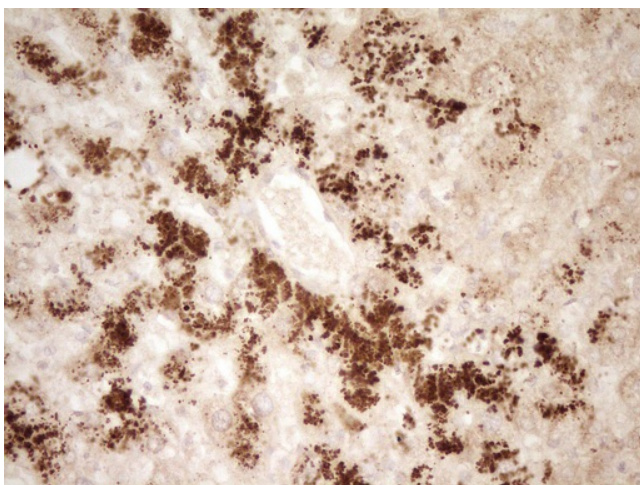
[View online »](#)

**Product images:**

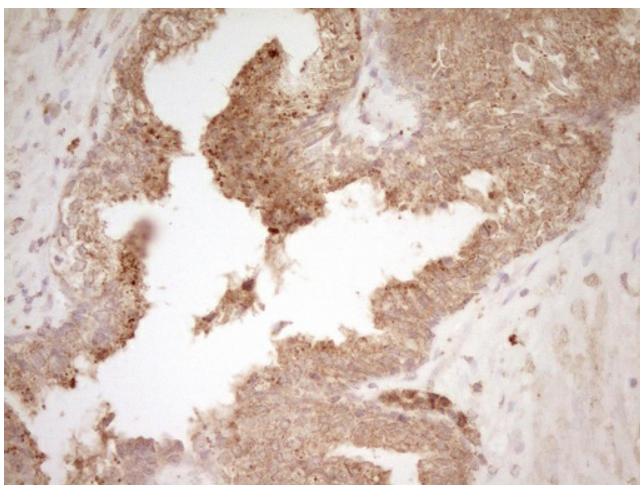
HEK293T cells were transfected with the pCMV6-ENTRY control (Left lane) or pCMV6-ENTRY HGF ([RC215593], Right lane) cDNA for 48 hrs and lysed. Equivalent amounts of cell lysates (5 ug per lane) were separated by SDS-PAGE and immunoblotted with anti-HGF. Positive lysates [LY400200] (100ug) and [LC400200] (20ug) can be purchased separately from OriGene.



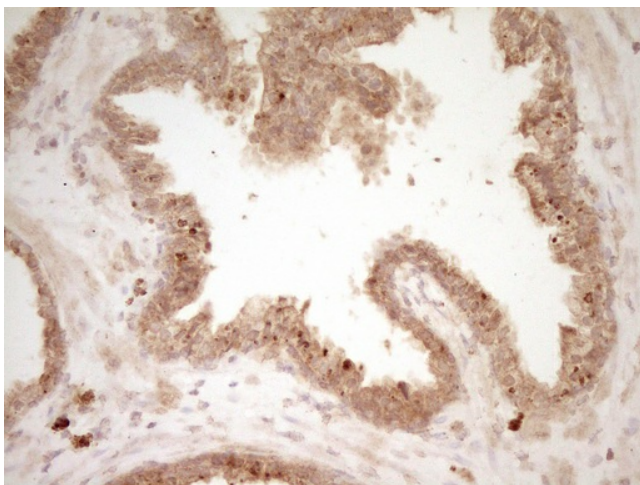
Immunohistochemical staining of paraffin-embedded Adenocarcinoma of Human breast tissue using anti-HGF mouse monoclonal antibody. (Heat-induced epitope retrieval by 1mM EDTA in 10mM Tris, pH8.5, 120°C for 3min, TA807223)



Immunohistochemical staining of paraffin-embedded Human liver tissue within the normal limits using anti-HGF mouse monoclonal antibody. (Heat-induced epitope retrieval by 1mM EDTA in 10mM Tris, pH8.5, 120°C for 3min, TA807223)



Immunohistochemical staining of paraffin-embedded Adenocarcinoma of Human endometrium tissue using anti-HGF mouse monoclonal antibody. (Heat-induced epitope retrieval by 1mM EDTA in 10mM Tris, pH8.5, 120°C for 3min, TA807223)



Immunohistochemical staining of paraffin-embedded Carcinoma of Human prostate tissue using anti-HGF mouse monoclonal antibody. (Heat-induced epitope retrieval by 1mM EDTA in 10mM Tris, pH8.5, 120°C for 3min, TA807223)