

## Product datasheet for **TA806770S**

### Osteopontin (SPP1) Mouse Monoclonal Antibody [Clone ID: OTI3C4]

#### Product data:

Product Type:	Primary Antibodies
Clone Name:	OTI3C4
Applications:	WB
Recommended Dilution:	WB 1:500
Reactivity:	Human
Host:	Mouse
Isotype:	IgG2b
Clonality:	Monoclonal
Immunogen:	Human recombinant protein fragment corresponding to amino acids 17-314 of human SPP1(NP_001035147) produced in E.coli.
Formulation:	PBS (pH 7.3) containing 1% BSA, 50% glycerol and 0.02% sodium azide.
Concentration:	1 mg/ml
Purification:	Purified from mouse ascites fluids or tissue culture supernatant by affinity chromatography (protein A/G)
Conjugation:	Unconjugated
Storage:	Store at -20°C as received.
Stability:	Stable for 12 months from date of receipt.
Predicted Protein Size:	33.7 kDa
Gene Name:	secreted phosphoprotein 1
Database Link:	<a href="#">NP_001035147</a> <a href="#">Entrez Gene 6696 Human P10451</a>
Background:	The protein encoded by this gene is involved in the attachment of osteoclasts to the mineralized bone matrix. The encoded protein is secreted and binds hydroxyapatite with high affinity. The osteoclast vitronectin receptor is found in the cell membrane and may be involved in the binding to this protein. This protein is also a cytokine that upregulates expression of interferon-gamma and interleukin-12. Several transcript variants encoding different isoforms have been found for this gene. [provided by RefSeq, Oct 2011]

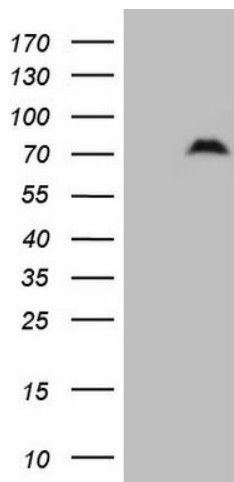


[View online »](#)

**Synonyms:** BNSP; BSPI; ETA-1; OPN

**Protein Families:** Druggable Genome, Secreted Protein

**Protein Pathways:** ECM-receptor interaction, Focal adhesion, Toll-like receptor signaling pathway

**Product images:**

HEK293T cells were transfected with the pCMV6-ENTRY control (Left lane) or pCMV6-ENTRY SPP1 ([RC204803], Right lane) cDNA for 48 hrs and lysed. Equivalent amounts of cell lysates (5 ug per lane) were separated by SDS-PAGE and immunoblotted with anti-SPP1. Positive lysates [LY421887] (100ug) and [LC421887] (20ug) can be purchased separately from OriGene.