

Product datasheet for **TA806672AM**

DUSP10 Mouse Monoclonal Antibody (Biotin conjugated) [Clone ID: OT11F2]

Product data:

Product Type:	Primary Antibodies
Clone Name:	OT11F2
Applications:	WB
Recommended Dilution:	WB 1:2000
Reactivity:	Human, Mouse, Rat
Host:	Mouse
Isotype:	IgG2b
Clonality:	Monoclonal
Immunogen:	Human recombinant protein fragment corresponding to amino acids 180-482 of human DUSP10(NP_009138) produced in E.coli.
Formulation:	PBS (pH 7.3) containing 1% BSA, 50% glycerol and 0.02% sodium azide.
Concentration:	0.5 mg/ml
Purification:	Purified from mouse ascites fluids or tissue culture supernatant by affinity chromatography (protein A/G)
Conjugation:	Biotin
Storage:	Store at -20°C as received.
Stability:	Stable for 12 months from date of receipt.
Gene Name:	dual specificity phosphatase 10
Database Link:	NP_009138 Entrez Gene 63953 Mouse Entrez Gene 63995 Rat Entrez Gene 11221 Human Q9Y6W6



[View online »](#)

Background:

Dual specificity protein phosphatases inactivate their target kinases by dephosphorylating both the phosphoserine/threonine and phosphotyrosine residues. They negatively regulate members of the MAP kinase superfamily, which is associated with cellular proliferation and differentiation. Different members of this family of dual specificity phosphatases show distinct substrate specificities for MAP kinases, different tissue distribution and subcellular localization, and different modes of expression induction by extracellular stimuli. This gene product binds to and inactivates p38 and SAPK/JNK. Alternative splicing results in multiple transcript variants. [provided by RefSeq, Apr 2014]

Synonyms:

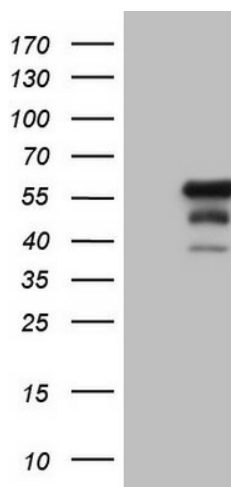
MKP-5; MKP5

Protein Families:

Druggable Genome, Phosphatase

Protein Pathways:

MAPK signaling pathway

Product images:

HEK293T cells were transfected with the pCMV6-ENTRY control (Left lane) or pCMV6-ENTRY DUSP10 ([RC206760], Right lane) cDNA for 48 hrs and lysed. Equivalent amounts of cell lysates (5 ug per lane) were separated by SDS-PAGE and immunoblotted with anti-DUSP10. Positive lysates [LY402107] (100ug) and [LC402107] (20ug) can be purchased separately from OriGene.