

## Product datasheet for **TA806590**

### **BCL2 Mouse Monoclonal Antibody [Clone ID: OTI5H8]**

#### **Product data:**

<b>Product Type:</b>	Primary Antibodies
<b>Clone Name:</b>	OTI5H8
<b>Applications:</b>	WB
<b>Recommended Dilution:</b>	WB 1:2000
<b>Reactivity:</b>	Human, Mouse, Rat
<b>Host:</b>	Mouse
<b>Isotype:</b>	IgG2a
<b>Clonality:</b>	Monoclonal
<b>Immunogen:</b>	Full length human recombinant protein of human BCL2 (NP_000624) produced in HEK293T cell.
<b>Formulation:</b>	PBS (pH 7.3) containing 1% BSA, 50% glycerol and 0.02% sodium azide.
<b>Concentration:</b>	1 mg/ml
<b>Purification:</b>	Purified from mouse ascites fluids or tissue culture supernatant by affinity chromatography (protein A/G)
<b>Conjugation:</b>	Unconjugated
<b>Storage:</b>	Store at -20°C as received.
<b>Stability:</b>	Stable for 12 months from date of receipt.
<b>Predicted Protein Size:</b>	26.1 kDa
<b>Gene Name:</b>	B-cell CLL/lymphoma 2
<b>Database Link:</b>	<a href="#">NP_000624</a> <a href="#">Entrez Gene 12043 Mouse</a> <a href="#">Entrez Gene 24224 Rat</a> <a href="#">Entrez Gene 596 Human</a> <a href="#">P10415</a>
<b>Background:</b>	This gene encodes an integral outer mitochondrial membrane protein that blocks the apoptotic death of some cells such as lymphocytes. Constitutive expression of BCL2, such as in the case of translocation of BCL2 to Ig heavy chain locus, is thought to be the cause of follicular lymphoma. Two transcript variants, produced by alternate splicing, differ in their C-terminal ends. [provided by RefSeq, Jul 2008]



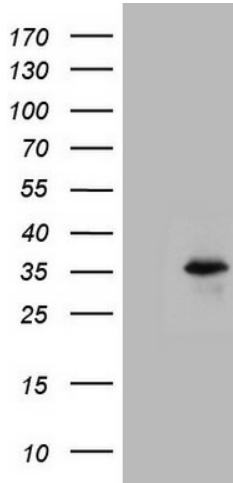
[View online »](#)

**Synonyms:** Bcl-2; PPP1R50

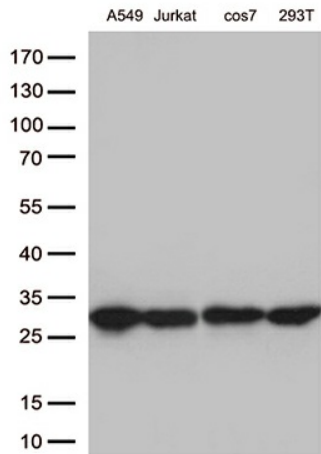
**Protein Families:** Druggable Genome, ES Cell Differentiation/IPS, Stem cell - Pluripotency, Transmembrane

**Protein Pathways:** Amyotrophic lateral sclerosis (ALS), Apoptosis, Colorectal cancer, Focal adhesion, Neurotrophin signaling pathway, Pathways in cancer, Prostate cancer, Small cell lung cancer

**Product images:**



HEK293T cells were transfected with the pCMV6-ENTRY control (Left lane) or pCMV6-ENTRY BCL2 ([RC204498], Right lane) cDNA for 48 hrs and lysed. Equivalent amounts of cell lysates (5 ug per lane) were separated by SDS-PAGE and immunoblotted with anti-BCL2 (1:2000). Positive lysates [LY424602] (100ug) and [LC424602] (20ug) can be purchased separately from OriGene.



Western blot analysis of extracts (35ug) from 4 cell lines lysates by using anti-BCL2 monoclonal antibody (1:500).