

Product datasheet for **TA806588**

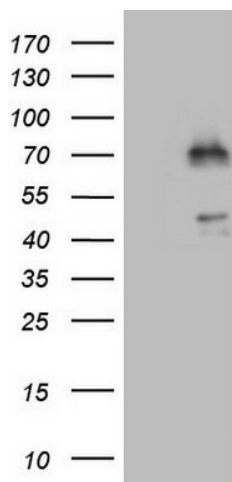
NR1D2 Mouse Monoclonal Antibody [Clone ID: OTI3D4]

Product data:

Product Type:	Primary Antibodies
Clone Name:	OTI3D4
Applications:	WB
Recommended Dilution:	WB 1:2000
Reactivity:	Human, Mouse, Rat
Host:	Mouse
Isotype:	IgG2a
Clonality:	Monoclonal
Immunogen:	Human recombinant protein fragment corresponding to amino acids 1-294 of human NR1D2(NP_005117) produced in E.coli.
Formulation:	PBS (pH 7.3) containing 1% BSA, 50% glycerol and 0.02% sodium azide.
Concentration:	1 mg/ml
Purification:	Purified from mouse ascites fluids or tissue culture supernatant by affinity chromatography (protein A/G)
Conjugation:	Unconjugated
Storage:	Store at -20°C as received.
Stability:	Stable for 12 months from date of receipt.
Gene Name:	nuclear receptor subfamily 1 group D member 2
Database Link:	NP_005117 Entrez Gene 259241 Rat Entrez Gene 353187 Mouse Entrez Gene 9975 Human Q14995
Synonyms:	BD73; EAR-1R; RVR
Protein Families:	Druggable Genome, Nuclear Hormone Receptor, Transcription Factors



[View online »](#)

Product images:

HEK293T cells were transfected with the pCMV6-ENTRY control (Cat# [PS100001], Left lane) or pCMV6-ENTRY NR1D2 (Cat# [RC206338], Right lane) cDNA for 48 hrs and lysed. Equivalent amounts of cell lysates (5 ug per lane) were separated by SDS-PAGE and immunoblotted with anti-NR1D2 (Cat# TA806588). Positive lysates [LY417483] (100ug) and [LC417483] (20ug) can be purchased separately from OriGene.