

## Product datasheet for **TA806582S**

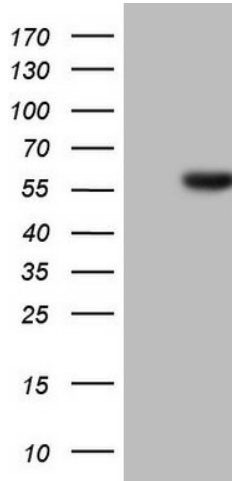
### **HNF 4 alpha (HNF4A) Mouse Monoclonal Antibody [Clone ID: OTI2H2]**

#### **Product data:**

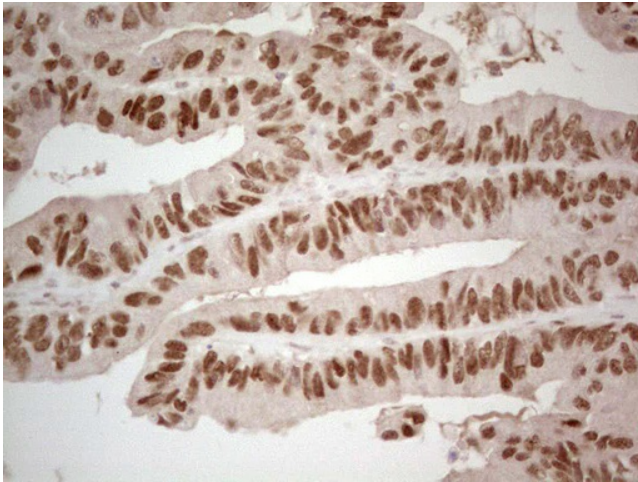
<b>Product Type:</b>	Primary Antibodies
<b>Clone Name:</b>	OTI2H2
<b>Applications:</b>	IHC, WB
<b>Recommended Dilution:</b>	WB 1:2000, IHC 1:150
<b>Reactivity:</b>	Human, Mouse, Rat
<b>Host:</b>	Mouse
<b>Isotype:</b>	IgG1
<b>Clonality:</b>	Monoclonal
<b>Immunogen:</b>	Human recombinant protein fragment corresponding to amino acids 1-315 of human HNF4A(NP_849180) produced in E.coli.
<b>Formulation:</b>	PBS (pH 7.3) containing 1% BSA, 50% glycerol and 0.02% sodium azide.
<b>Concentration:</b>	1 mg/ml
<b>Purification:</b>	Purified from mouse ascites fluids or tissue culture supernatant by affinity chromatography (protein A/G)
<b>Conjugation:</b>	Unconjugated
<b>Storage:</b>	Store at -20°C as received.
<b>Stability:</b>	Stable for 12 months from date of receipt.
<b>Gene Name:</b>	hepatocyte nuclear factor 4 alpha
<b>Database Link:</b>	<a href="#">NP_849180</a> <a href="#">Entrez Gene 15378 Mouse</a> <a href="#">Entrez Gene 25735 Rat</a> <a href="#">Entrez Gene 3172 Human</a> <a href="#">P41235</a>
<b>Synonyms:</b>	FRTS4; HNF4; HNF4a7; HNF4a8; HNF4a9; HNF4alpha; MODY; MODY1; NR2A1; NR2A21; TCF; TCF-14; TCF14
<b>Protein Families:</b>	Druggable Genome, ES Cell Differentiation/IPS, Nuclear Hormone Receptor, Transcription Factors
<b>Protein Pathways:</b>	Maturity onset diabetes of the young



[View online »](#)

**Product images:**

HEK293T cells were transfected with the pCMV6-ENTRY control (Cat# [PS100001], Left lane) or pCMV6-ENTRY HNF4A (Cat# [RC214914], Right lane) cDNA for 48 hrs and lysed. Equivalent amounts of cell lysates (5 ug per lane) were separated by SDS-PAGE and immunoblotted with anti-HNF4A (Cat# [TA806582]).



Immunohistochemical staining of paraffin-embedded Adenocarcinoma of Human colon tissue using anti-HNF4A mouse monoclonal antibody. (Heat-induced epitope retrieval by 1mM EDTA in 10mM Tris, pH8.5, 120°C for 3min, [TA806582])