

Product datasheet for **TA805712BM**

LTBR Mouse Monoclonal Antibody (HRP conjugated) [Clone ID: OTI3G10]

Product data:

Product Type:	Primary Antibodies
Clone Name:	OTI3G10
Applications:	WB
Recommended Dilution:	WB 1:500
Reactivity:	Human
Host:	Mouse
Isotype:	IgG1
Clonality:	Monoclonal
Immunogen:	Human recombinant protein fragment corresponding to amino acids 31-227 of human LTBR(NP_002333) produced in E.coli.
Formulation:	PBS (pH 7.3) containing 1% BSA, 50% glycerol.
Concentration:	0.5 mg/ml
Purification:	Purified from mouse ascites fluids or tissue culture supernatant by affinity chromatography (protein A/G)
Conjugation:	HRP
Storage:	Store at -20°C as received.
Stability:	Stable for 12 months from date of receipt.
Predicted Protein Size:	46.5 kDa
Gene Name:	lymphotoxin beta receptor
Database Link:	NP_002333 Entrez Gene 4055 Human P36941



[View online »](#)

Background:

This gene encodes a member of the tumor necrosis factor receptor superfamily. The major ligands of this receptor include lymphotoxin alpha/beta and tumor necrosis factor ligand superfamily member 14. The encoded protein plays a role in signalling during the development of lymphoid and other organs, lipid metabolism, immune response, and programmed cell death. Activity of this receptor has also been linked to carcinogenesis. Alternatively spliced transcript variants encoding multiple isoforms have been observed. [provided by RefSeq, Aug 2012]

Synonyms:

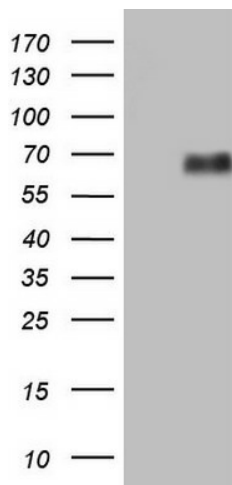
CD18; D12S370; LT-BETA-R; TNF-R-III; TNFCR; TNFR-RP; TNFR2-RP; TNFR3; TNFRSF3

Protein Families:

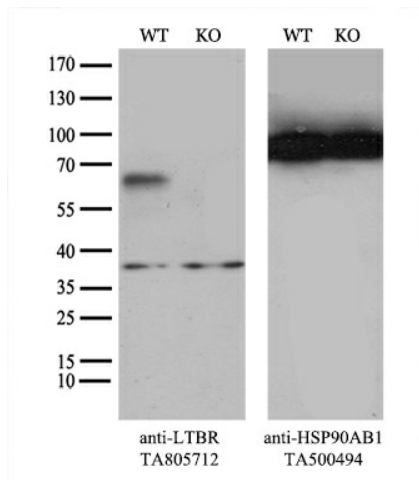
Druggable Genome, Transmembrane

Protein Pathways:

Cytokine-cytokine receptor interaction

Product images:


HEK293T cells were transfected with the pCMV6-ENTRY control (Cat# [PS100001], Left lane) or pCMV6-ENTRY LTBR (Cat# [RC204734], Right lane) cDNA for 48 hrs and lysed. Equivalent amounts of cell lysates (5 ug per lane) were separated by SDS-PAGE and immunoblotted with anti-LTBR antibody (Cat# [TA805712]). Positive lysates [LY400841] (100ug) and [LC400841] (20ug) can be purchased separately from OriGene.



Equivalent amounts of cell lysates (10 ug per lane) of wild-type HeLa cells (WT, Cat# LC810HELA) and LTBR-Knockout HeLa cells (KO, Cat# [LC811486]) were separated by SDS-PAGE and immunoblotted with anti-LTBR monoclonal antibody [TA805712] (1:100^v). Then the blotted membrane was stripped and reprobed with anti-HSP90 antibody as a loading control.