

## Product datasheet for **TA805014**

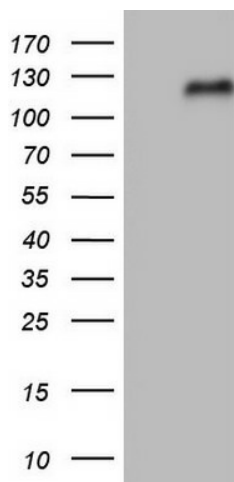
### **Nrf2 (NFE2L2) Mouse Monoclonal Antibody [Clone ID: OTI8A10]**

#### **Product data:**

Product Type:	Primary Antibodies
Clone Name:	OTI8A10
Applications:	WB
Recommended Dilution:	WB 1:2000
Reactivity:	Human
Host:	Mouse
Isotype:	IgG2a
Clonality:	Monoclonal
Immunogen:	Human recombinant protein fragment corresponding to amino acids 330-605 of human NFE2L2 (NP_006155) produced in E.coli.
Formulation:	PBS (pH 7.3) containing 1% BSA, 50% glycerol and 0.02% sodium azide.
Concentration:	1 mg/ml
Purification:	Purified from mouse ascites fluids or tissue culture supernatant by affinity chromatography (protein A/G)
Conjugation:	Unconjugated
Storage:	Store at -20°C as received.
Stability:	Stable for 12 months from date of receipt.
Gene Name:	nuclear factor, erythroid 2 like 2
Database Link:	<a href="#">NP_006155</a> <a href="#">Entrez Gene 4780 Human</a> <a href="#">Q16236</a>
Synonyms:	NRF2
Protein Families:	Transcription Factors



[View online »](#)

**Product images:**

HEK293T cells were transfected with the pCMV6-ENTRY control (Cat# [PS100001], Left lane) or pCMV6-ENTRY NFE2L2 (Cat# [RC204140], Right lane) cDNA for 48 hrs and lysed. Equivalent amounts of cell lysates (5 ug per lane) were separated by SDS-PAGE and immunoblotted with anti-NFE2L2 (Cat# TA805014).