

Product datasheet for **TA804956**

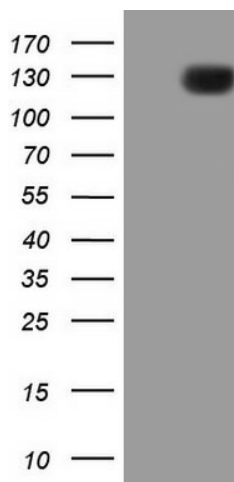
PDGF Receptor alpha (PDGFRA) Mouse Monoclonal Antibody [Clone ID: OTI2E9]

Product data:

Product Type:	Primary Antibodies
Clone Name:	OTI2E9
Applications:	WB
Recommended Dilution:	WB 1:500
Reactivity:	Human, Mouse, Rat
Host:	Mouse
Isotype:	IgG2a
Clonality:	Monoclonal
Immunogen:	Human recombinant protein fragment corresponding to amino acids 32-324 of human PDGFRA (NP_006197) produced in E.coli.
Formulation:	PBS (pH 7.3) containing 1% BSA, 50% glycerol and 0.02% sodium azide.
Concentration:	1 mg/ml
Purification:	Purified from mouse ascites fluids or tissue culture supernatant by affinity chromatography (protein A/G)
Conjugation:	Unconjugated
Storage:	Store at -20°C as received.
Stability:	Stable for 12 months from date of receipt.
Predicted Protein Size:	120.3 kDa
Gene Name:	platelet derived growth factor receptor alpha
Database Link:	NP_006197 Entrez Gene 18595 Mouse Entrez Gene 25267 Rat Entrez Gene 5156 Human P16234
Synonyms:	CD140A; PDGFR-2; PDGFR2; RHEPDGFRA
Protein Families:	Druggable Genome, ES Cell Differentiation/IPS, Protein Kinase, Transmembrane
Protein Pathways:	Calcium signaling pathway, Colorectal cancer, Cytokine-cytokine receptor interaction, Endocytosis, Focal adhesion, Gap junction, Glioma, MAPK signaling pathway, Melanoma, Pathways in cancer, Prostate cancer, Regulation of actin cytoskeleton



[View online »](#)

Product images:

HEK293T cells were transfected with the pCMV6-ENTRY control (Left lane) or pCMV6-ENTRY PDGFRA ([RC211740], Right lane) cDNA for 48 hrs and lysed. Equivalent amounts of cell lysates (5 ug per lane) were separated by SDS-PAGE and immunoblotted with anti-PDGFR. Positive lysates [LY416803] (100ug) and [LC416803] (20ug) can be purchased separately from OriGene.