

Product datasheet for **TA804935S**

PCNA Mouse Monoclonal Antibody [Clone ID: OTI13G4]

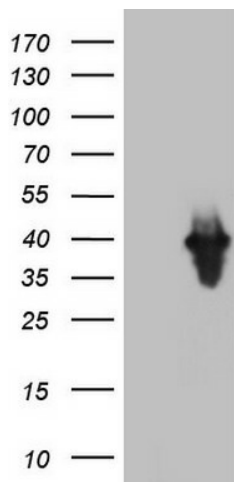
Product data:

Product Type:	Primary Antibodies
Clone Name:	OTI13G4
Applications:	IHC, WB
Recommended Dilution:	WB 1:2000, IHC 1:150
Reactivity:	Human, Mouse, Rat
Host:	Mouse
Isotype:	IgG2a
Clonality:	Monoclonal
Immunogen:	Full length human recombinant protein of human PCNA (NP_002583) produced in E.coli.
Formulation:	PBS (pH 7.3) containing 1% BSA, 50% glycerol and 0.02% sodium azide.
Concentration:	1 mg/ml
Purification:	Purified from mouse ascites fluids or tissue culture supernatant by affinity chromatography (protein A/G)
Conjugation:	Unconjugated
Storage:	Store at -20°C as received.
Stability:	Stable for 12 months from date of receipt.
Predicted Protein Size:	28.6 kDa
Gene Name:	proliferating cell nuclear antigen
Database Link:	NP_002583 Entrez Gene 18538 Mouse Entrez Gene 25737 Rat Entrez Gene 5111 Human P12004
Background:	The protein encoded by this gene is found in the nucleus and is a cofactor of DNA polymerase delta. The encoded protein acts as a homotrimer and helps increase the processivity of leading strand synthesis during DNA replication. In response to DNA damage, this protein is ubiquitinated and is involved in the RAD6-dependent DNA repair pathway. Two transcript variants encoding the same protein have been found for this gene. Pseudogenes of this gene have been described on chromosome 4 and on the X chromosome. [provided by RefSeq, Jul 2008]

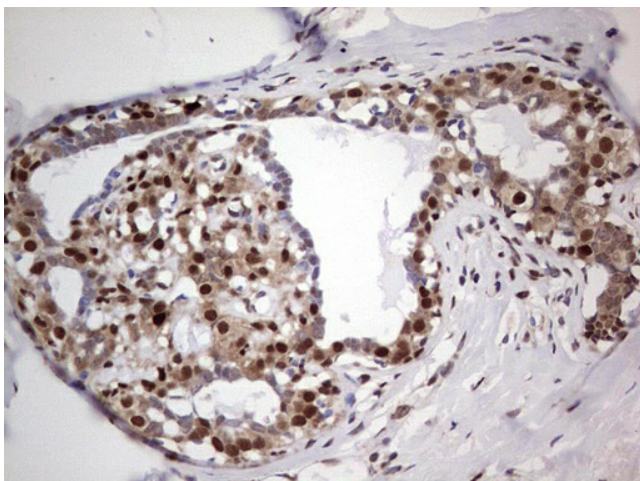


[View online »](#)

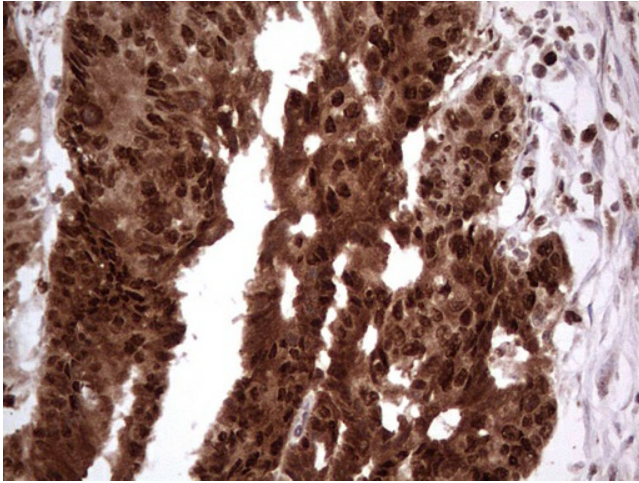
Synonyms:	ATLD2
Protein Families:	Druggable Genome, Stem cell - Pluripotency
Protein Pathways:	Base excision repair, Cell cycle, DNA replication, Mismatch repair, Nucleotide excision repair

Product images:

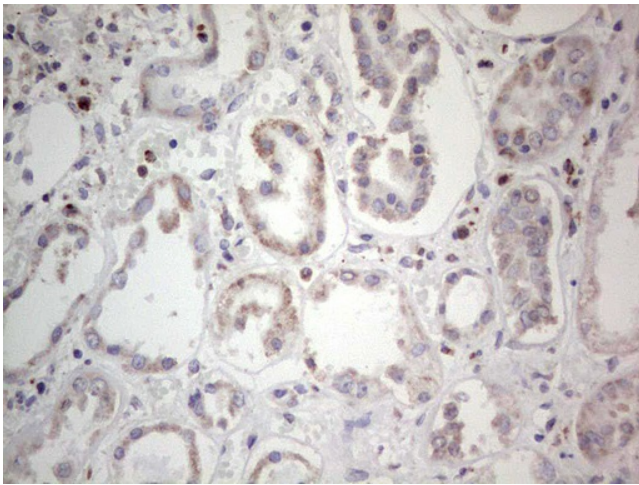
HEK293T cells were transfected with the pCMV6-ENTRY control (Left lane) or pCMV6-ENTRY PCNA ([RC201741], Right lane) cDNA for 48 hrs and lysed. Equivalent amounts of cell lysates (5 ug per lane) were separated by SDS-PAGE and immunoblotted with anti-PCNA. Positive lysates [LY400929] (100ug) and [LC400929] (20ug) can be purchased separately from OriGene.



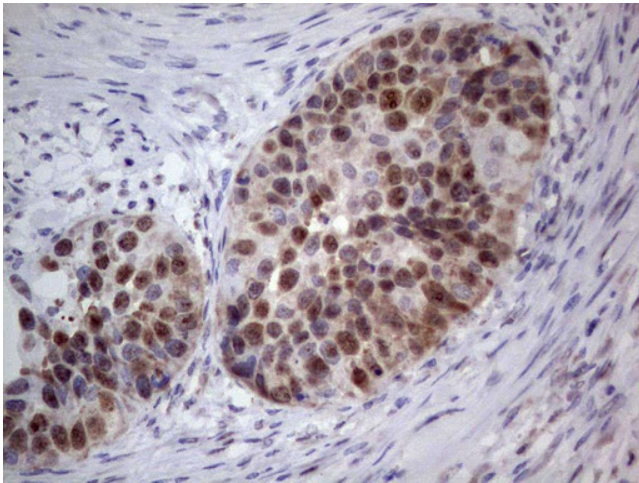
Immunohistochemical staining of paraffin-embedded Adenocarcinoma of Human breast tissue using anti-PCNA mouse monoclonal antibody. (Heat-induced epitope retrieval by 1mM EDTA in 10mM Tris, pH8.5, 120°C for 3min, [TA804935])



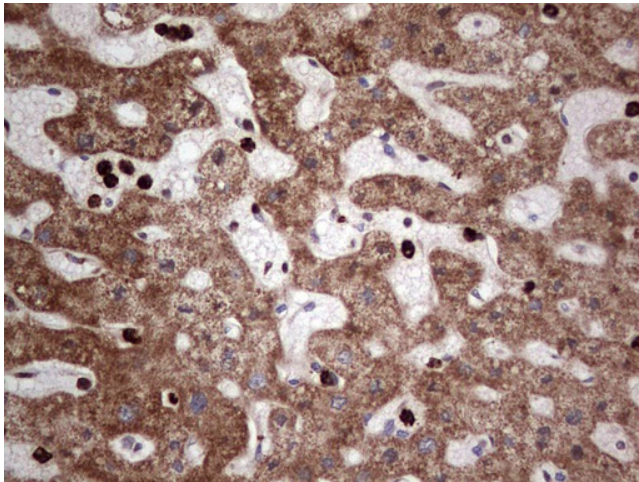
Immunohistochemical staining of paraffin-embedded Adenocarcinoma of Human colon tissue using anti-PCNA mouse monoclonal antibody. (Heat-induced epitope retrieval by 1mM EDTA in 10mM Tris, pH8.5, 120°C for 3min, [TA804935])



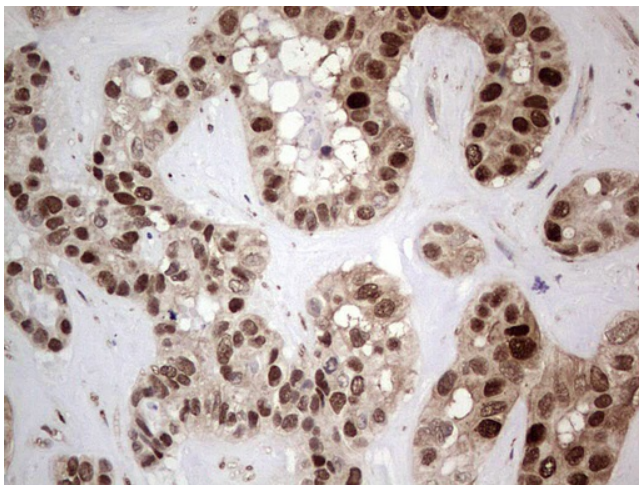
Immunohistochemical staining of paraffin-embedded Human Kidney tissue within the normal limits using anti-PCNA mouse monoclonal antibody. (Heat-induced epitope retrieval by 1mM EDTA in 10mM Tris, pH8.5, 120°C for 3min, [TA804935])



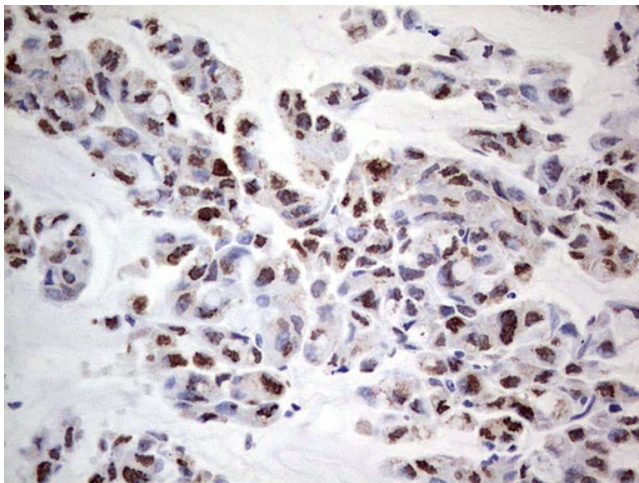
Immunohistochemical staining of paraffin-embedded Carcinoma of Human kidney tissue using anti-PCNA mouse monoclonal antibody. (Heat-induced epitope retrieval by 1mM EDTA in 10mM Tris, pH8.5, 120°C for 3min, [TA804935])



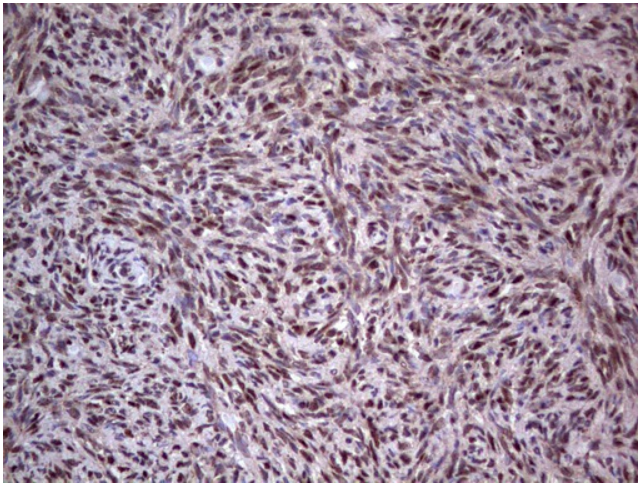
Immunohistochemical staining of paraffin-embedded Human liver tissue within the normal limits using anti-PCNA mouse monoclonal antibody. (Heat-induced epitope retrieval by 1mM EDTA in 10mM Tris, pH8.5, 120°C for 3min, [TA804935])



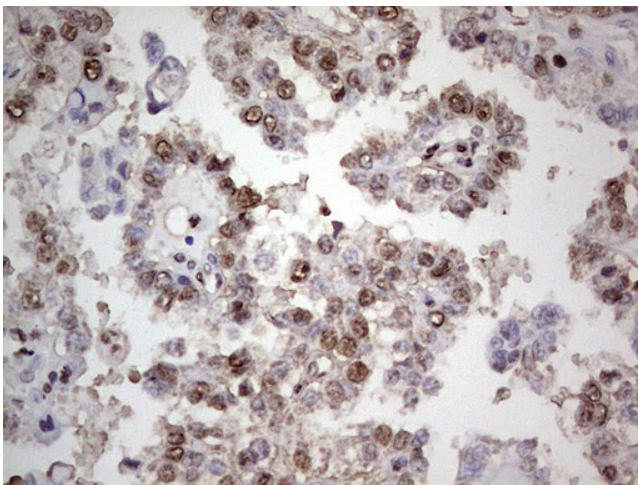
Immunohistochemical staining of paraffin-embedded Carcinoma of Human liver tissue using anti-PCNA mouse monoclonal antibody. (Heat-induced epitope retrieval by 1mM EDTA in 10mM Tris, pH8.5, 120°C for 3min, [TA804935])



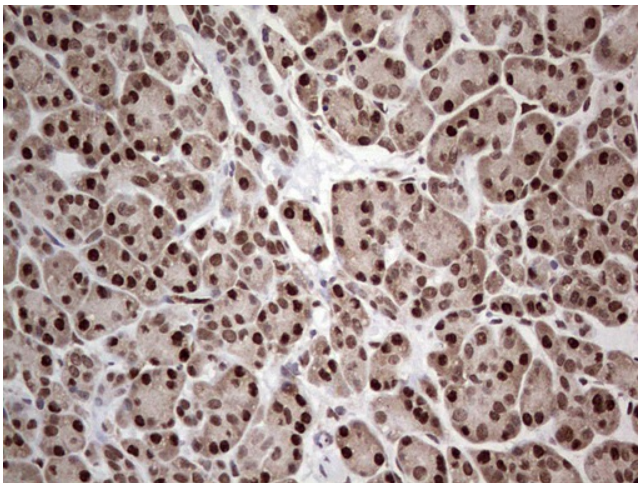
Immunohistochemical staining of paraffin-embedded Carcinoma of Human lung tissue using anti-PCNA mouse monoclonal antibody. (Heat-induced epitope retrieval by 1mM EDTA in 10mM Tris, pH8.5, 120°C for 3min, [TA804935])



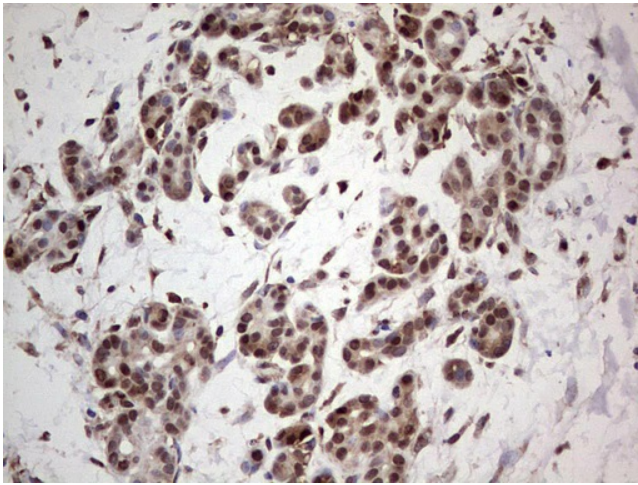
Immunohistochemical staining of paraffin-embedded Human Ovary tissue within the normal limits using anti-PCNA mouse monoclonal antibody. (Heat-induced epitope retrieval by 1mM EDTA in 10mM Tris, pH8.5, 120°C for 3min, [TA804935])



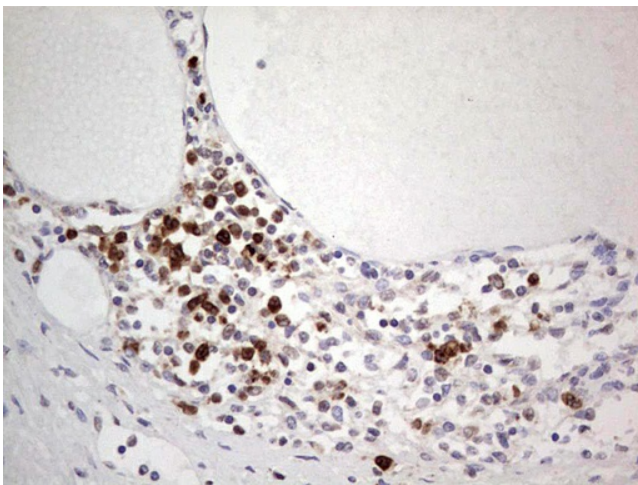
Immunohistochemical staining of paraffin-embedded Adenocarcinoma of Human ovary tissue using anti-PCNA mouse monoclonal antibody. (Heat-induced epitope retrieval by 1mM EDTA in 10mM Tris, pH8.5, 120°C for 3min, [TA804935])



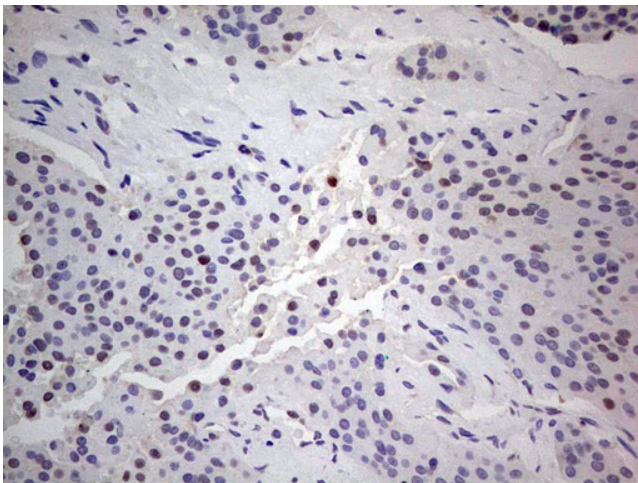
Immunohistochemical staining of paraffin-embedded Human pancreas tissue within the normal limits using anti-PCNA mouse monoclonal antibody. (Heat-induced epitope retrieval by 1mM EDTA in 10mM Tris, pH8.5, 120°C for 3min, [TA804935])



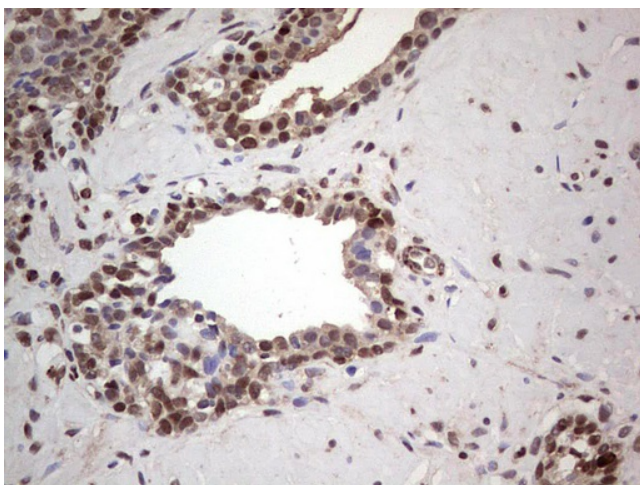
Immunohistochemical staining of paraffin-embedded Carcinoma of Human pancreas tissue using anti-PCNA mouse monoclonal antibody. (Heat-induced epitope retrieval by 1mM EDTA in 10mM Tris, pH8.5, 120°C for 3min, [TA804935])



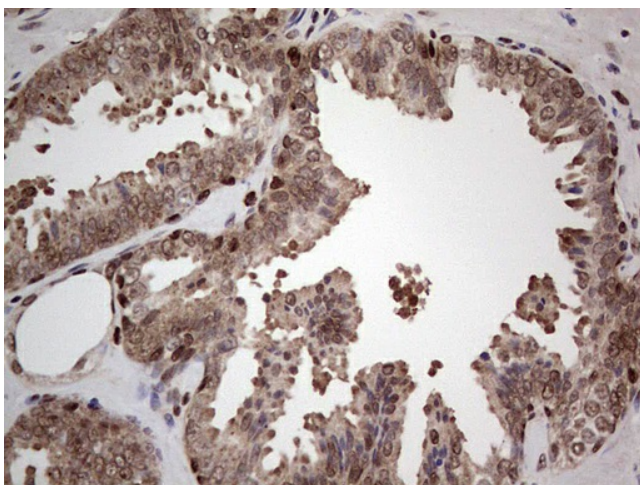
Immunohistochemical staining of paraffin-embedded Human thyroid tissue within the normal limits using anti-PCNA mouse monoclonal antibody. (Heat-induced epitope retrieval by 1mM EDTA in 10mM Tris, pH8.5, 120°C for 3min, [TA804935])



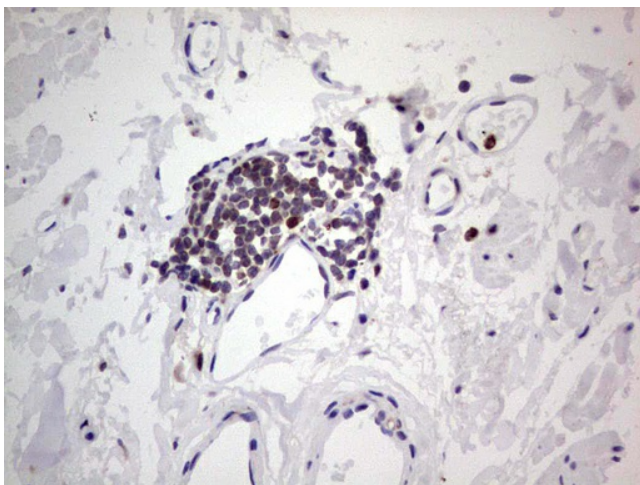
Immunohistochemical staining of paraffin-embedded Carcinoma of Human thyroid tissue using anti-PCNA mouse monoclonal antibody. (Heat-induced epitope retrieval by 1mM EDTA in 10mM Tris, pH8.5, 120°C for 3min, [TA804935])



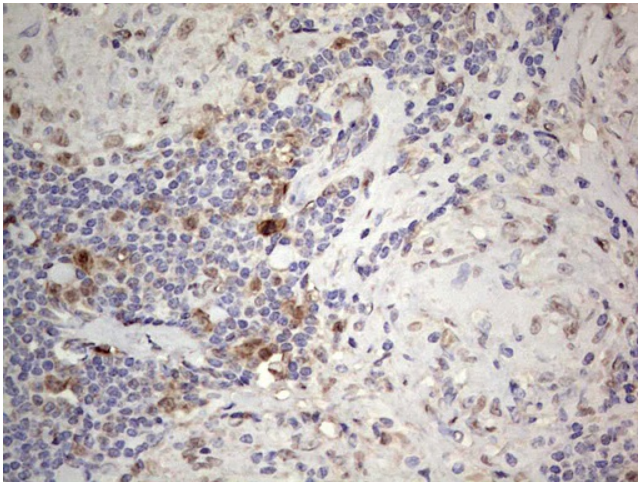
Immunohistochemical staining of paraffin-embedded Human prostate tissue within the normal limits using anti-PCNA mouse monoclonal antibody. (Heat-induced epitope retrieval by 1mM EDTA in 10mM Tris, pH8.5, 120°C for 3min, [TA804935])



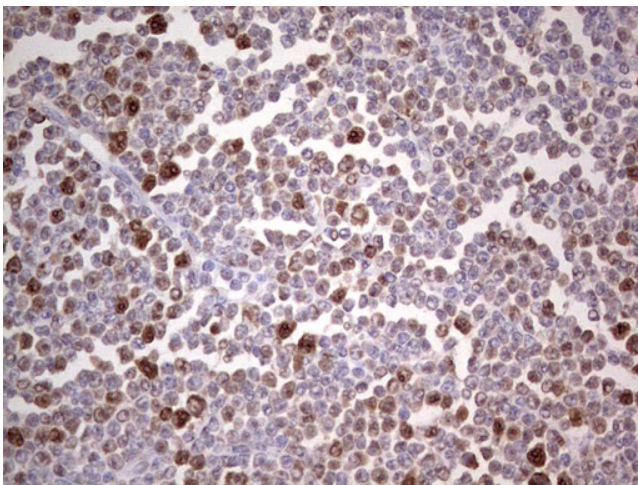
Immunohistochemical staining of paraffin-embedded Carcinoma of Human prostate tissue using anti-PCNA mouse monoclonal antibody. (Heat-induced epitope retrieval by 1mM EDTA in 10mM Tris, pH8.5, 120°C for 3min, [TA804935])



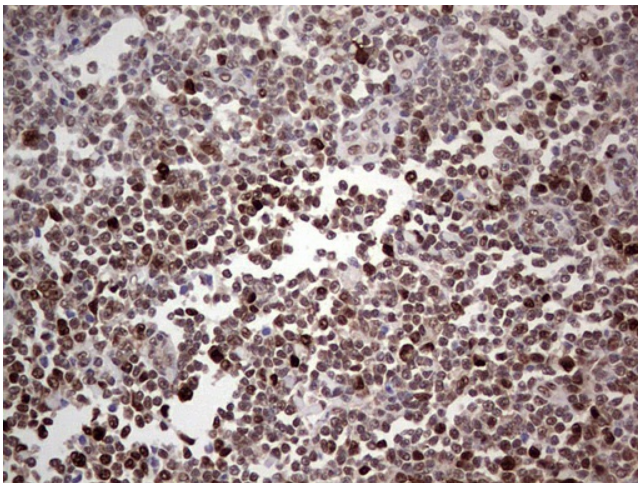
Immunohistochemical staining of paraffin-embedded Human bladder tissue within the normal limits using anti-PCNA mouse monoclonal antibody. (Heat-induced epitope retrieval by 1mM EDTA in 10mM Tris, pH8.5, 120°C for 3min, [TA804935])



Immunohistochemical staining of paraffin-embedded Human lymph node tissue within the normal limits using anti-PCNA mouse monoclonal antibody. (Heat-induced epitope retrieval by 1mM EDTA in 10mM Tris, pH8.5, 120°C for 3min, [TA804935])



Immunohistochemical staining of paraffin-embedded Human lymphoma tissue using anti-PCNA mouse monoclonal antibody. (Heat-induced epitope retrieval by 1mM EDTA in 10mM Tris, pH8.5, 120°C for 3min, [TA804935])



Immunohistochemical staining of paraffin-embedded Human tonsil within the normal limits using anti-PCNA mouse monoclonal antibody. (Heat-induced epitope retrieval by 1mM EDTA in 10mM Tris, pH8.5, 120°C for 3min, [TA804935])