

## Product datasheet for **TA804642BM**

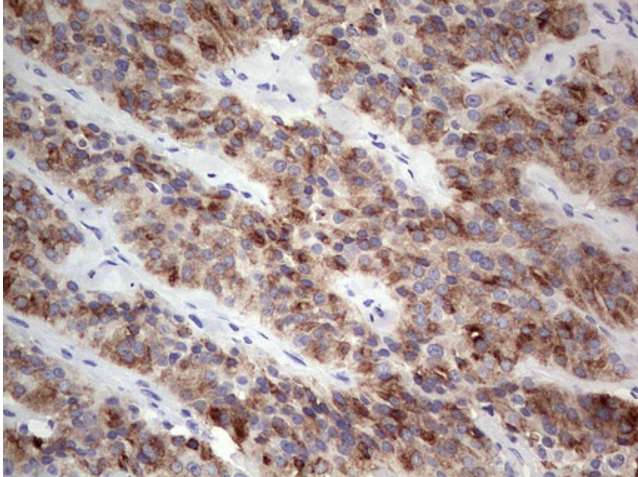
### Thyroglobulin (TG) Mouse Monoclonal Antibody (HRP conjugated) [Clone ID: OTI15F1]

#### Product data:

|                       |  |
|-----------------------|--|
| Product Type:         | Primary Antibodies   |
| Clone Name:           | OTI15F1  |
| Applications:         | IHC  |
| Recommended Dilution: | IHC 1:150  |
| Reactivity:           | Human  |
| Host:                 | Mouse  |
| Isotype:              | IgG1   |
| Clonality:            | Monoclonal   |
| Immunogen:            | Human recombinant protein fragment corresponding to amino acids 20-358 of human TG (NP_003226) produced in E.coli. |
| Formulation:          | PBS (pH 7.3) containing 1% BSA, 50% glycerol.  |
| Concentration:        | 0.5 mg/ml  |
| Purification:         | Purified from mouse ascites fluids or tissue culture supernatant by affinity chromatography (protein A/G)          |
| Conjugation:          | HRP  |
| Storage:              | Store at -20°C as received.  |
| Stability:            | Stable for 12 months from date of receipt.   |
| Gene Name:            | thyroglobulin  |
| Database Link:        | <a href="#">NP_003226</a><br><a href="#">Entrez Gene 7038 Human</a><br><a href="#">P01266</a>                      |
| Synonyms:             | AITD3; TGN   |
| Protein Families:     | Druggable Genome   |
| Protein Pathways:     | Autoimmune thyroid disease   |



[View online »](#)

**Product images:**

Immunohistochemical staining of paraffin-embedded Carcinoma of Human thyroid tissue using anti-TG mouse monoclonal antibody. (Heat-induced epitope retrieval by 1mM EDTA in 10mM Tris, pH8.5, 120°C for 3min, [TA804642])