

## Product datasheet for **TA804236S**

### **BOULE (BOLL) Mouse Monoclonal Antibody [Clone ID: OTI5A2]**

#### **Product data:**

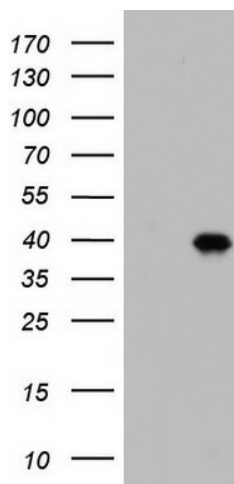
Product Type:	Primary Antibodies
Clone Name:	OTI5A2
Applications:	WB
Recommended Dilution:	WB 1:2000
Reactivity:	Human, Mouse, Rat
Host:	Mouse
Isotype:	IgG1
Clonality:	Monoclonal
Immunogen:	Full length human recombinant protein of human BOLL (NP_149019) produced in E.coli.
Formulation:	PBS (pH 7.3) containing 1% BSA, 50% glycerol and 0.02% sodium azide.
Concentration:	1 mg/ml
Purification:	Purified from mouse ascites fluids or tissue culture supernatant by affinity chromatography (protein A/G)
Conjugation:	Unconjugated
Storage:	Store at -20°C as received.
Stability:	Stable for 12 months from date of receipt.
Predicted Protein Size:	31.1 kDa
Gene Name:	boule homolog, RNA binding protein
Database Link:	<a href="#">NP_149019</a> <a href="#">Entrez Gene 75388 Mouse</a> <a href="#">Entrez Gene 501143 Rat</a> <a href="#">Entrez Gene 66037 Human</a> <a href="#">Q8N9W6</a>
Background:	This gene belongs to the DAZ gene family required for germ cell development. It encodes an RNA-binding protein which is more similar to Drosophila Boule than to human proteins encoded by genes DAZ (deleted in azoospermia) or DAZL (deleted in azoospermia-like). Loss of this gene function results in the absence of sperm in semen (azoospermia). Histological studies demonstrated that the primary defect is at the meiotic G2/M transition. Two alternatively spliced transcript variants encoding distinct isoforms have been found for this gene. [provided by RefSeq, Jul 2008]



[View online »](#)

Synonyms: BOULE

### Product images:



HEK293T cells were transfected with the pCMV6-ENTRY control (Left lane) or pCMV6-ENTRY BOLL ([RC207436], Right lane) cDNA for 48 hrs and lysed. Equivalent amounts of cell lysates (5 ug per lane) were separated by SDS-PAGE and immunoblotted with anti-BOLL. Positive lysates [LY409790] (100ug) and [LC409790] (20ug) can be purchased separately from OriGene.