

Product datasheet for **TA804186**

bcl 6 (BCL6) Mouse Monoclonal Antibody [Clone ID: OT11C3]

Product data:

Product Type:	Primary Antibodies
Clone Name:	OT11C3
Applications:	IHC
Recommended Dilution:	IHC 1:150
Reactivity:	Human, Mouse, Rat
Host:	Mouse
Isotype:	IgG2a
Clonality:	Monoclonal
Immunogen:	Human recombinant protein fragment corresponding to amino acids 1-300 of human BCL6 (NP_001697) produced in E.coli.
Formulation:	PBS (pH 7.3) containing 1% BSA, 50% glycerol and 0.02% sodium azide.
Concentration:	1 mg/ml
Purification:	Purified from mouse ascites fluids or tissue culture supernatant by affinity chromatography (protein A/G)
Conjugation:	Unconjugated
Storage:	Store at -20°C as received.
Stability:	Stable for 12 months from date of receipt.
Gene Name:	B-cell CLL/lymphoma 6
Database Link:	NP_001697 Entrez Gene 12053 Mouse Entrez Gene 303836 Rat Entrez Gene 604 Human P41182



[View online »](#)

Background:

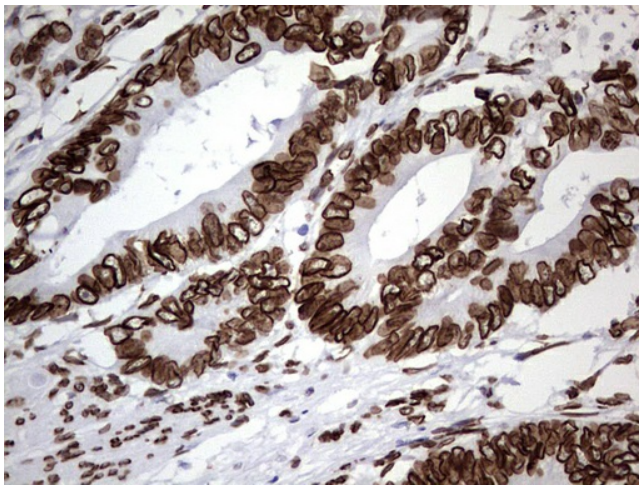
The protein encoded by this gene is a zinc finger transcription factor and contains an N-terminal POZ domain. This protein acts as a sequence-specific repressor of transcription, and has been shown to modulate the transcription of START-dependent IL-4 responses of B cells. This protein can interact with a variety of POZ-containing proteins that function as transcription corepressors. This gene is found to be frequently translocated and hypermutated in diffuse large-cell lymphoma (DLCL), and may be involved in the pathogenesis of DLCL. Alternatively spliced transcript variants encoding different protein isoforms have been found for this gene. [provided by RefSeq, Sep 2008]

Synonyms:

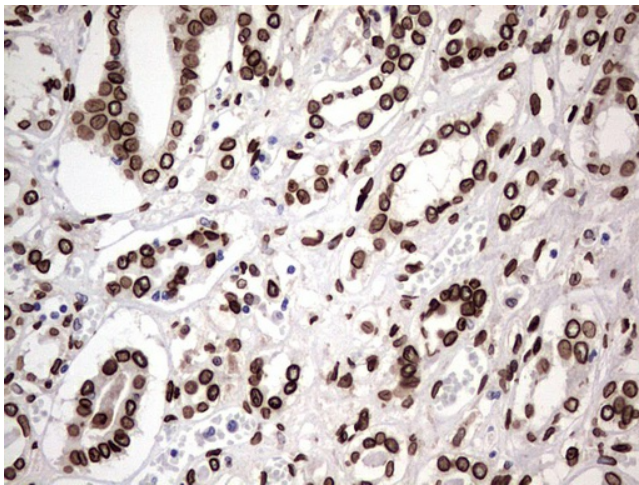
BCL5; BCL6A; LAZ3; ZBTB27; ZNF51

Protein Families:

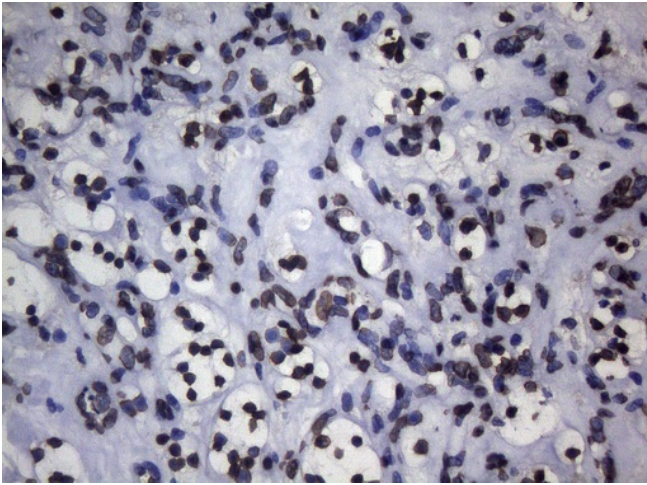
Druggable Genome, Transcription Factors

Product images:

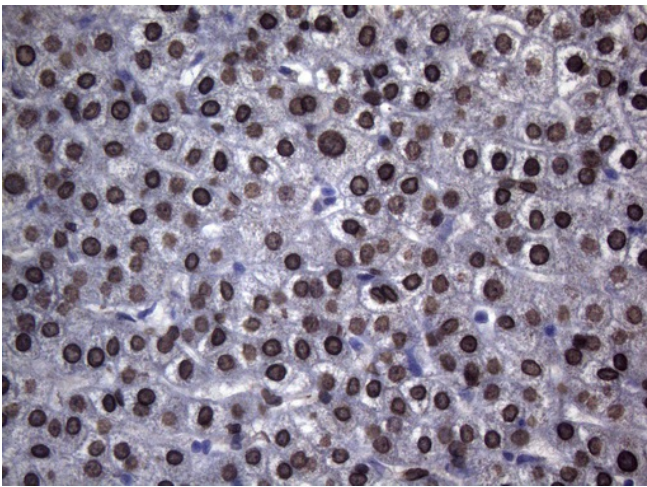
Immunohistochemical staining of paraffin-embedded Adenocarcinoma of Human colon tissue using anti-BCL6 mouse monoclonal antibody. (TA804186)



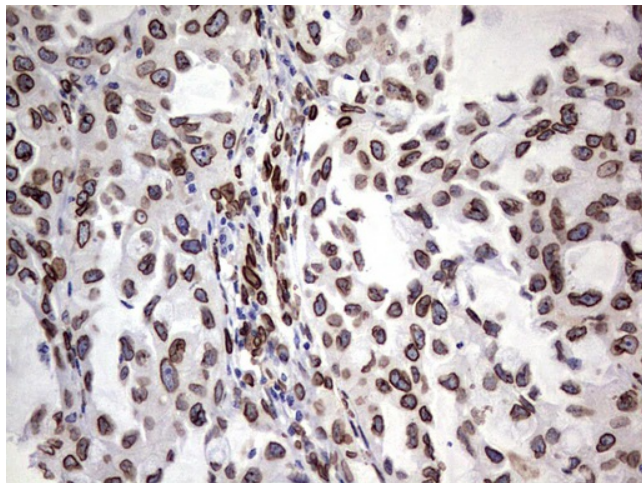
Immunohistochemical staining of paraffin-embedded Human Kidney tissue using anti-BCL6 mouse monoclonal antibody. (TA804186)



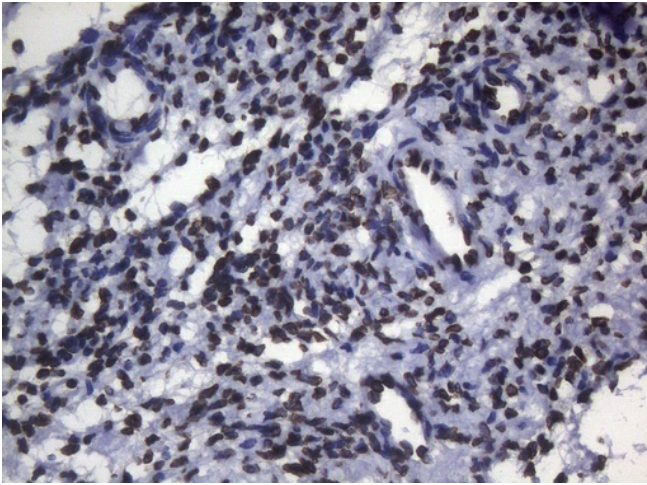
Immunohistochemical staining of paraffin-embedded Carcinoma of Human kidney tissue using anti-BCL6 mouse monoclonal antibody. (TA804186)



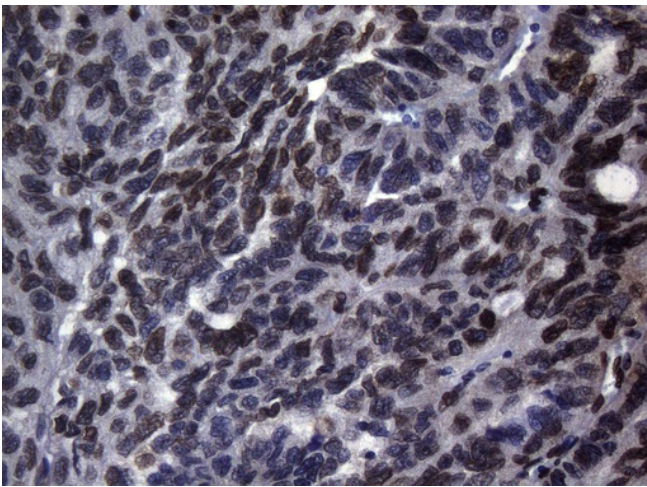
Immunohistochemical staining of paraffin-embedded Human liver tissue using anti-BCL6 mouse monoclonal antibody. (TA804186)



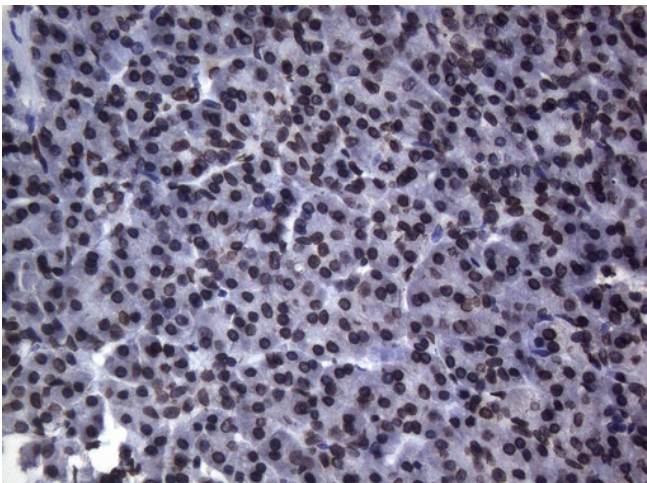
Immunohistochemical staining of paraffin-embedded Carcinoma of Human lung tissue using anti-BCL6 mouse monoclonal antibody. (TA804186)



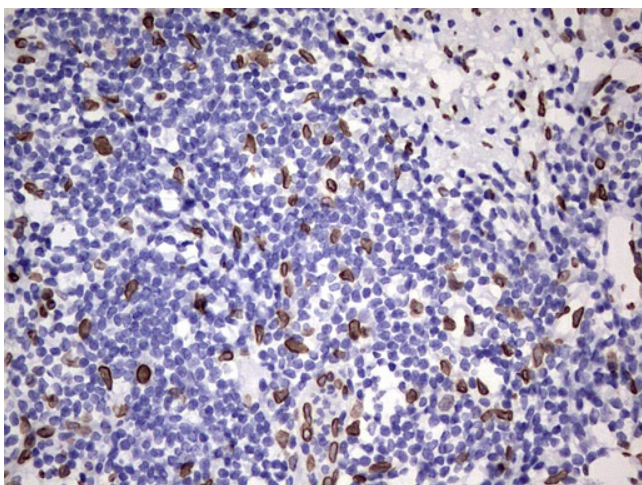
Immunohistochemical staining of paraffin-embedded Human Ovary tissue using anti-BCL6 mouse monoclonal antibody. (TA804186)



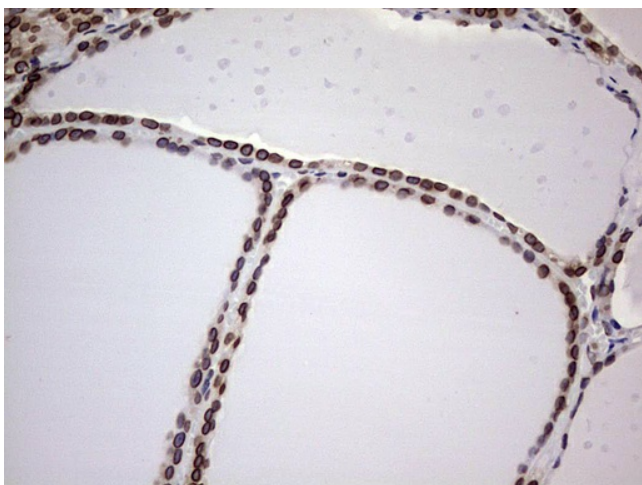
Immunohistochemical staining of paraffin-embedded Adenocarcinoma of Human ovary tissue using anti-BCL6 mouse monoclonal antibody. (TA804186)



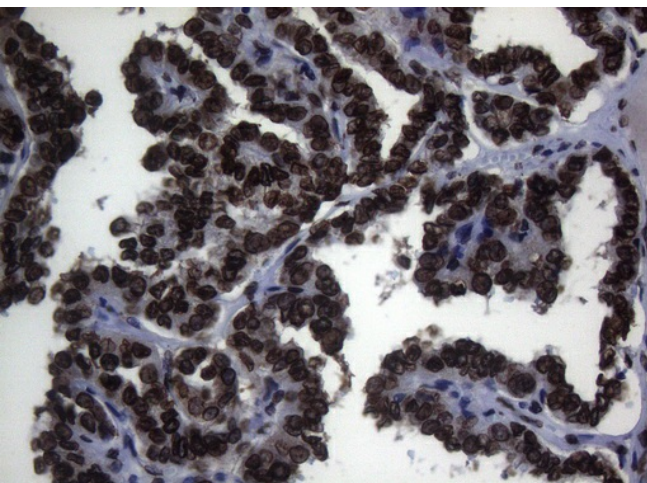
Immunohistochemical staining of paraffin-embedded Human pancreas tissue using anti-BCL6 mouse monoclonal antibody. (TA804186)



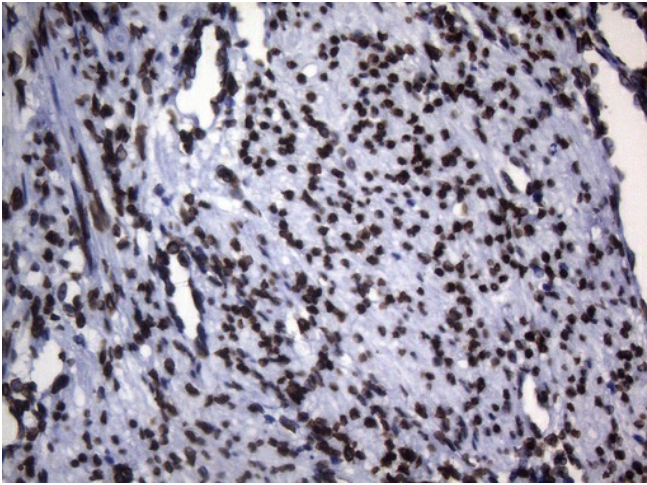
Immunohistochemical staining of paraffin-embedded Carcinoma of Human pancreas tissue using anti-BCL6 mouse monoclonal antibody. (TA804186)



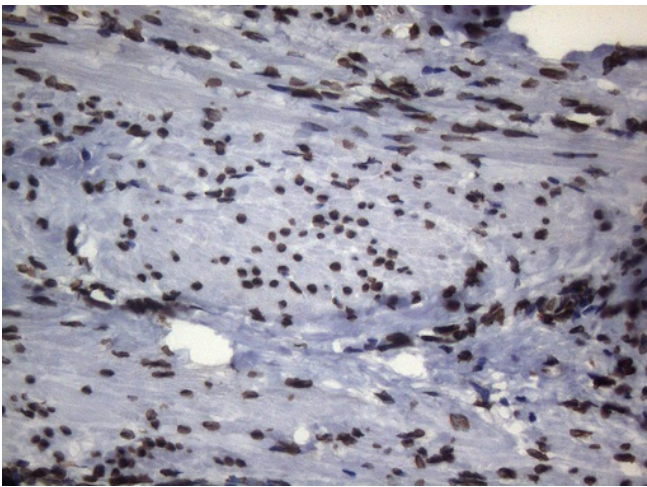
Immunohistochemical staining of paraffin-embedded Human thyroid tissue using anti-BCL6 mouse monoclonal antibody. (TA804186)



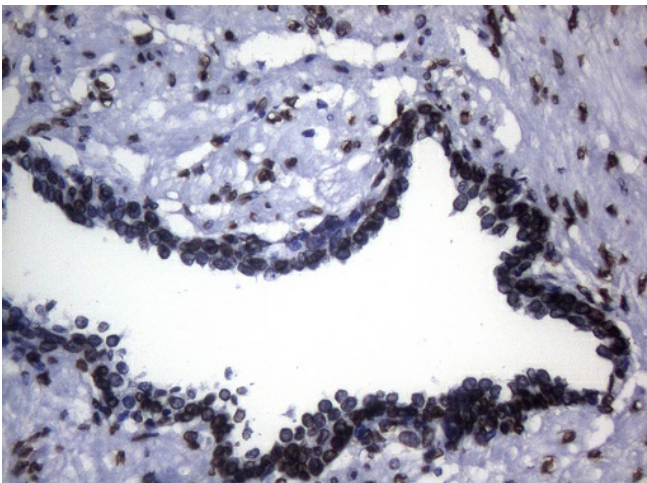
Immunohistochemical staining of paraffin-embedded Carcinoma of Human thyroid tissue using anti-BCL6 mouse monoclonal antibody. (Heat-induced epitope retrieval by 1mM EDTA in 10mM Tris buffer (pH8.5) at 120°C for 3min, TA804186) (1:150)



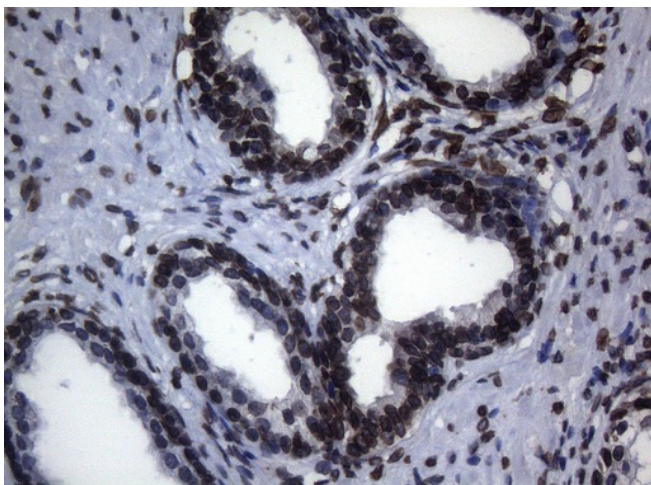
Immunohistochemical staining of paraffin-embedded Human endometrium tissue using anti-BCL6 mouse monoclonal antibody. (TA804186)



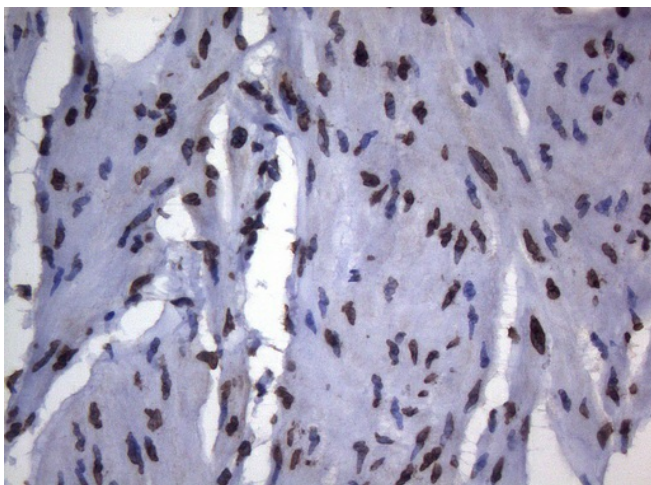
Immunohistochemical staining of paraffin-embedded Adenocarcinoma of Human endometrium tissue using anti-BCL6 mouse monoclonal antibody. (TA804186)



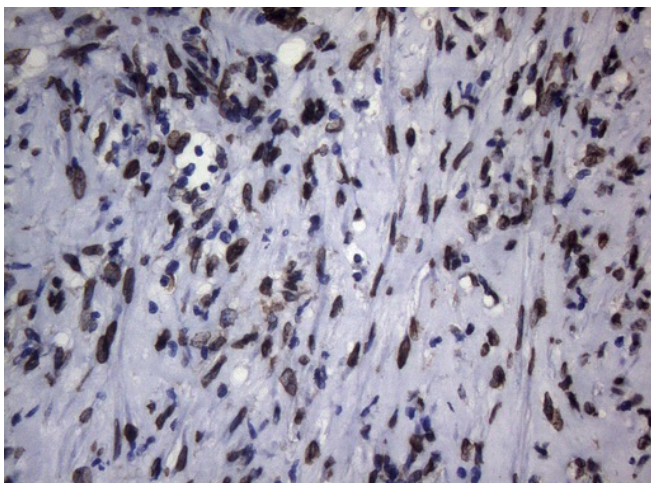
Immunohistochemical staining of paraffin-embedded Human prostate tissue using anti-BCL6 mouse monoclonal antibody. (TA804186) (1:150)



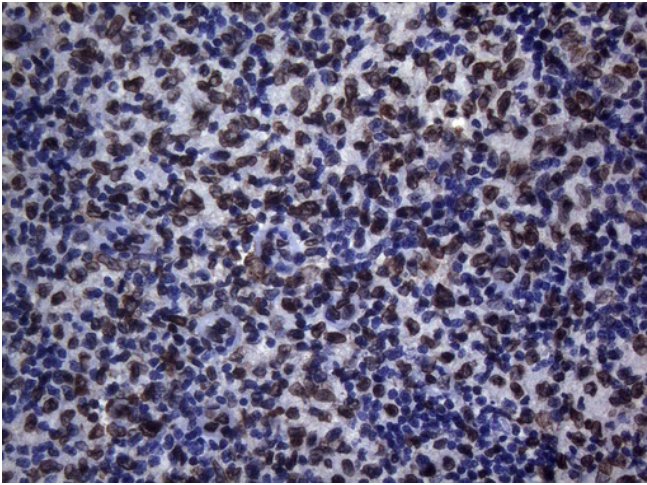
Immunohistochemical staining of paraffin-embedded Carcinoma of Human prostate tissue using anti-BCL6 mouse monoclonal antibody. (TA804186)



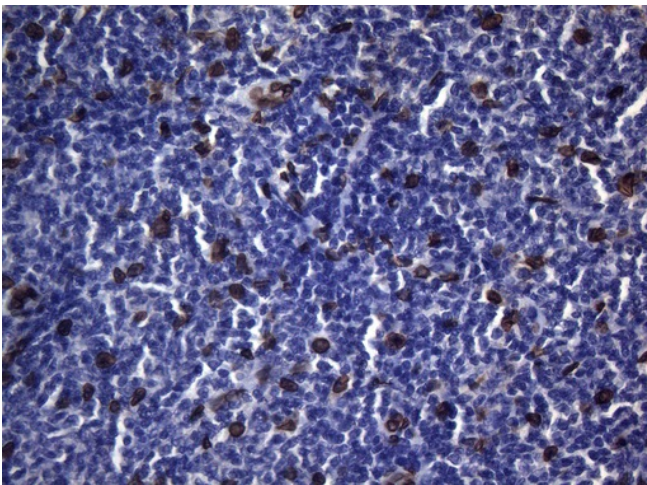
Immunohistochemical staining of paraffin-embedded Human bladder tissue using anti-BCL6 mouse monoclonal antibody. (TA804186)



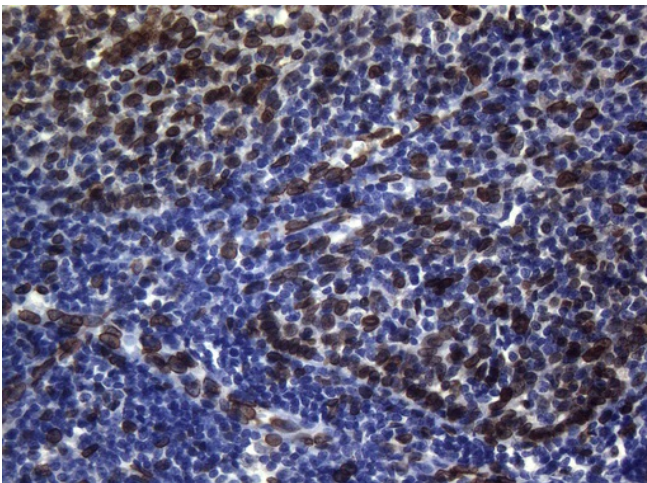
Immunohistochemical staining of paraffin-embedded Carcinoma of Human bladder tissue using anti-BCL6 mouse monoclonal antibody. (TA804186)



Immunohistochemical staining of paraffin-embedded Human lymph node tissue using anti-BCL6 mouse monoclonal antibody. (TA804186)



Immunohistochemical staining of paraffin-embedded Human lymphoma tissue using anti-BCL6 mouse monoclonal antibody. (TA804186)



Immunohistochemical staining of paraffin-embedded Human tonsil using anti-BCL6 mouse monoclonal antibody. (TA804186)