

## Product datasheet for **TA803733BM**

### Fibronectin (FN1) Mouse Monoclonal Antibody (HRP conjugated) [Clone ID: OTI1G2]

#### Product data:

Product Type:	Primary Antibodies
Clone Name:	OTI1G2
Applications:	IHC, WB
Recommended Dilution:	WB 1:500, IHC 1:150
Reactivity:	Human, Mouse, Rat
Host:	Mouse
Isotype:	IgG1
Clonality:	Monoclonal
Immunogen:	Human recombinant protein fragment corresponding to amino acids 32-307 of human FN1 (NP_473375) produced in E.coli.
Formulation:	PBS (pH 7.3) containing 1% BSA, 50% glycerol.
Concentration:	0.5 mg/ml
Purification:	Purified from mouse ascites fluids or tissue culture supernatant by affinity chromatography (protein A/G)
Conjugation:	HRP
Storage:	Store at -20°C as received.
Stability:	Stable for 12 months from date of receipt.
Predicted Protein Size:	71.2 kDa
Gene Name:	fibronectin 1
Database Link:	<a href="#">NP_473375</a> <a href="#">Entrez Gene 14268 Mouse</a> <a href="#">Entrez Gene 25661 Rat</a> <a href="#">Entrez Gene 2335 Human</a> <a href="#">P02751</a>



[View online »](#)

**Background:**

This gene encodes fibronectin, a glycoprotein present in a soluble dimeric form in plasma, and in a dimeric or multimeric form at the cell surface and in extracellular matrix. Fibronectin is involved in cell adhesion and migration processes including embryogenesis, wound healing, blood coagulation, host defense, and metastasis. The gene has three regions subject to alternative splicing, with the potential to produce 20 different transcript variants. However, the full-length nature of some variants has not been determined. [provided by RefSeq, Jul 2008]

**Synonyms:**

CIG; ED-B; FINC; FN; FNZ; GFND; GFND2; LETS; MSF

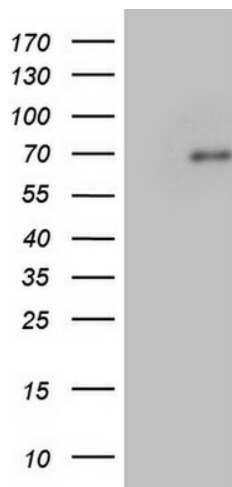
**Protein Families:**

Druggable Genome, ES Cell Differentiation/IPS, Secreted Protein

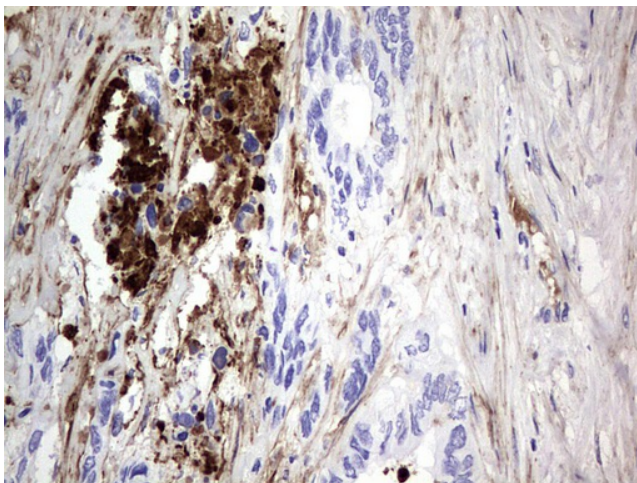
**Protein Pathways:**

ECM-receptor interaction, Focal adhesion, Pathways in cancer, Regulation of actin cytoskeleton, Small cell lung cancer

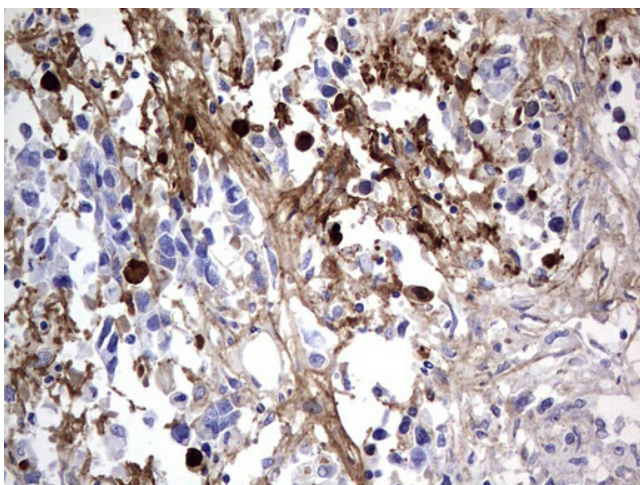
**Product images:**



HEK293T cells were transfected with the pCMV6-ENTRY control (Left lane) or pCMV6-ENTRY FN1 ([RC212860], Right lane) cDNA for 48 hrs and lysed. Equivalent amounts of cell lysates (5 ug per lane) were separated by SDS-PAGE and immunoblotted with anti-FN1. Positive lysates [LY409278] (100ug) and [LC409278] (20ug) can be purchased separately from OriGene.



Immunohistochemical staining of paraffin-embedded Adenocarcinoma of Human colon tissue using anti-FN1 mouse monoclonal antibody. (Heat-induced epitope retrieval by 1mM EDTA in 10mM Tris, pH8.5, 120°C for 3min, [TA803733])



Immunohistochemical staining of paraffin-embedded Adenocarcinoma of Human ovary tissue using anti-FN1 mouse monoclonal antibody. (Heat-induced epitope retrieval by 1mM EDTA in 10mM Tris, pH8.5, 120°C for 3min, [TA803733])