

Product datasheet for **TA803663AM**

A RAF (ARAF) Mouse Monoclonal Antibody (Biotin conjugated) [Clone ID: OTI2G9]

Product data:

Product Type:	Primary Antibodies
Clone Name:	OTI2G9
Applications:	IHC, WB
Recommended Dilution:	WB 1:2000, IHC 1:150
Reactivity:	Human, Mouse, Rat
Host:	Mouse
Isotype:	IgG2a
Clonality:	Monoclonal
Immunogen:	Human recombinant protein fragment corresponding to amino acids 145-365 of human ARAF (NP_001645) produced in E.coli.
Formulation:	PBS (pH 7.3) containing 1% BSA, 50% glycerol and 0.02% sodium azide.
Concentration:	0.5 mg/ml
Purification:	Purified from mouse ascites fluids or tissue culture supernatant by affinity chromatography (protein A/G)
Conjugation:	Biotin
Storage:	Store at -20°C as received.
Stability:	Stable for 12 months from date of receipt.
Gene Name:	A-Raf proto-oncogene, serine/threonine kinase
Database Link:	NP_001645 Entrez Gene 11836 Mouse Entrez Gene 64363 Rat Entrez Gene 369 Human P10398
Background:	This proto-oncogene belongs to the RAF subfamily of the Ser/Thr protein kinase family, and maybe involved in cell growth and development. Alternatively spliced transcript variants encoding different isoforms have been found for this gene. [provided by RefSeq, Jan 2012]
Synonyms:	A-RAF; ARAF1; PKS2; RAFA1
Protein Families:	Druggable Genome, Protein Kinase

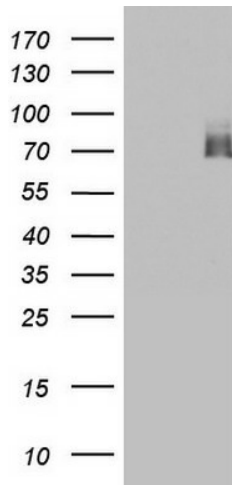


[View online »](#)

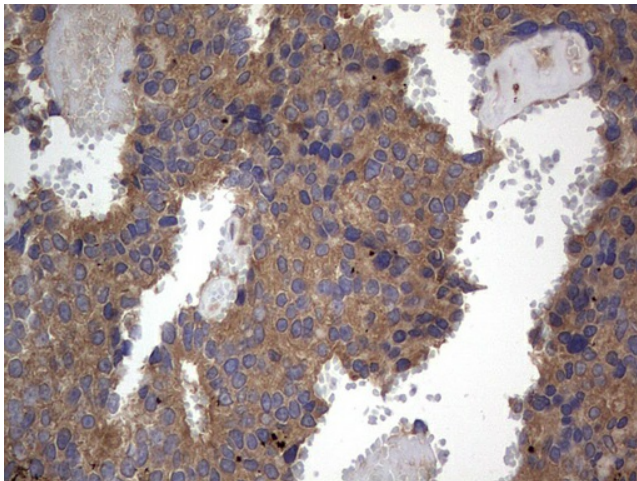
Protein Pathways:

Acute myeloid leukemia, Bladder cancer, Chronic myeloid leukemia, Colorectal cancer, Endometrial cancer, ErbB signaling pathway, Glioma, Insulin signaling pathway, Long-term depression, Long-term potentiation, Melanoma, Natural killer cell mediated cytotoxicity, Non-small cell lung cancer, Pancreatic cancer, Pathways in cancer, Progesterone-mediated oocyte maturation, Prostate cancer, Regulation of actin cytoskeleton, Renal cell carcinoma, Vascular smooth muscle contraction

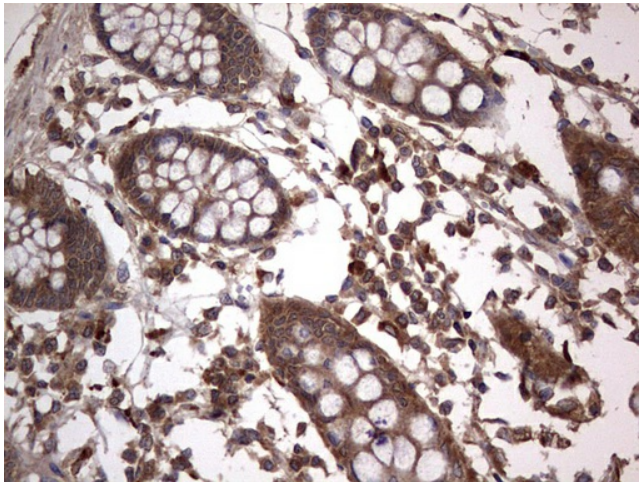
Product images:



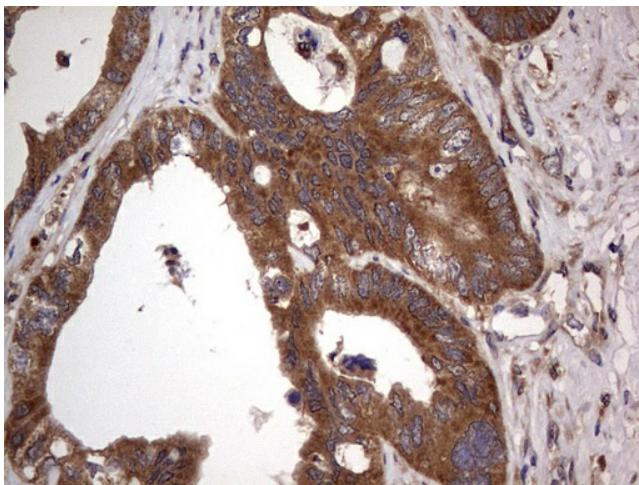
HEK293T cells were transfected with the pCMV6-ENTRY control (Cat# [PS100001], Left lane) or pCMV6-ENTRY ARAF (Cat# [RC200737], Right lane) cDNA for 48 hrs and lysed. Equivalent amounts of cell lysates (5 ug per lane) were separated by SDS-PAGE and immunoblotted with anti-ARAF (Cat# [TA803663]). Positive lysates [LY400623] (100ug) and [LC400623] (20ug) can be purchased separately from OriGene.



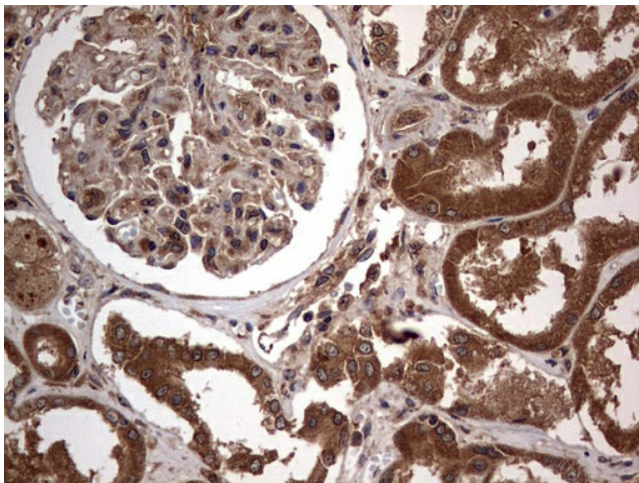
Immunohistochemical staining of paraffin-embedded Adenocarcinoma of Human breast tissue using anti-ARAF mouse monoclonal antibody. (Heat-induced epitope retrieval by 1mM EDTA in 10mM Tris, pH8.5, 120°C for 3min, [TA803663])



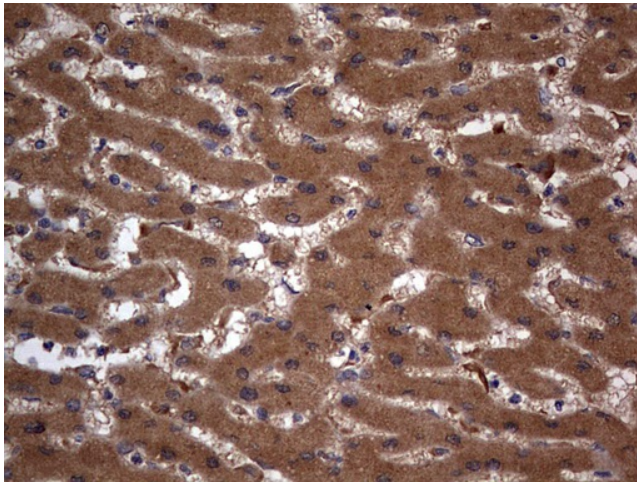
Immunohistochemical staining of paraffin-embedded Human colon tissue within the normal limits using anti-ARAF mouse monoclonal antibody. (Heat-induced epitope retrieval by 1mM EDTA in 10mM Tris, pH8.5, 120°C for 3min, [TA803663])



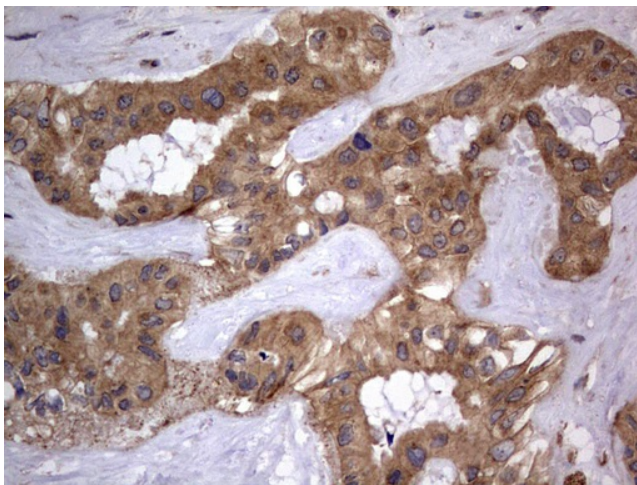
Immunohistochemical staining of paraffin-embedded Adenocarcinoma of Human colon tissue using anti-ARAF mouse monoclonal antibody. (Heat-induced epitope retrieval by 1mM EDTA in 10mM Tris, pH8.5, 120°C for 3min, [TA803663])



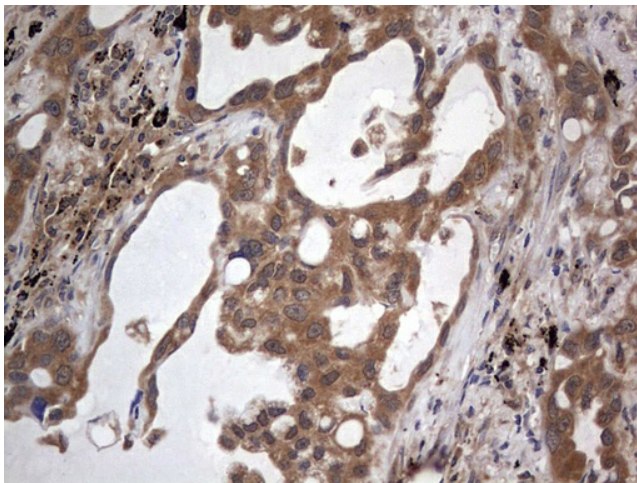
Immunohistochemical staining of paraffin-embedded Human Kidney tissue within the normal limits using anti-ARAF mouse monoclonal antibody. (Heat-induced epitope retrieval by 1mM EDTA in 10mM Tris, pH8.5, 120°C for 3min, [TA803663])



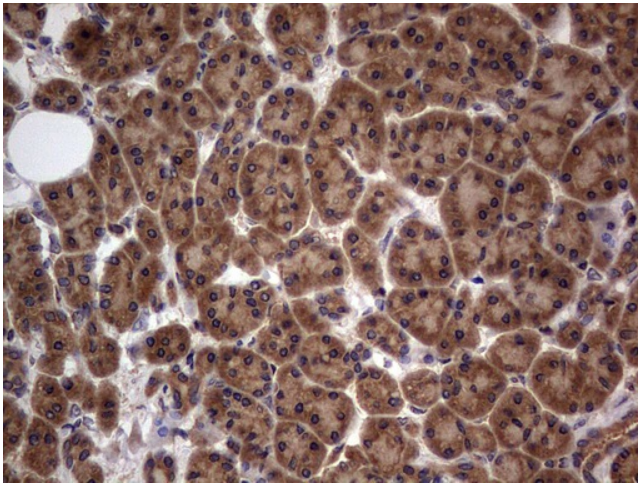
Immunohistochemical staining of paraffin-embedded Human liver tissue within the normal limits using anti-ARAF mouse monoclonal antibody. (Heat-induced epitope retrieval by 1mM EDTA in 10mM Tris, pH8.5, 120°C for 3min, [TA803663])



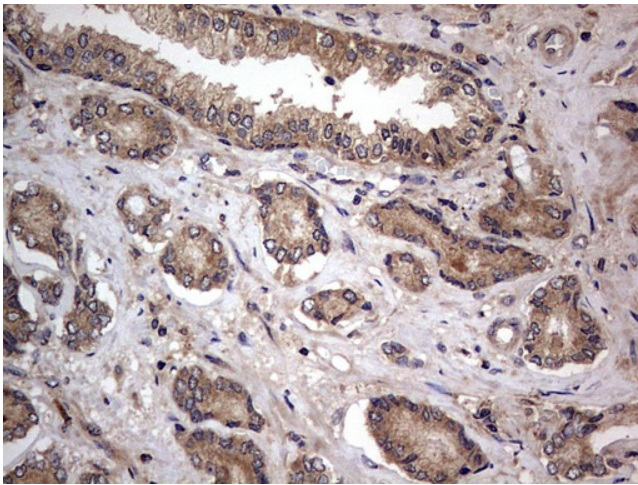
Immunohistochemical staining of paraffin-embedded Carcinoma of Human liver tissue using anti-ARAF mouse monoclonal antibody. (Heat-induced epitope retrieval by 1mM EDTA in 10mM Tris, pH8.5, 120°C for 3min, [TA803663])



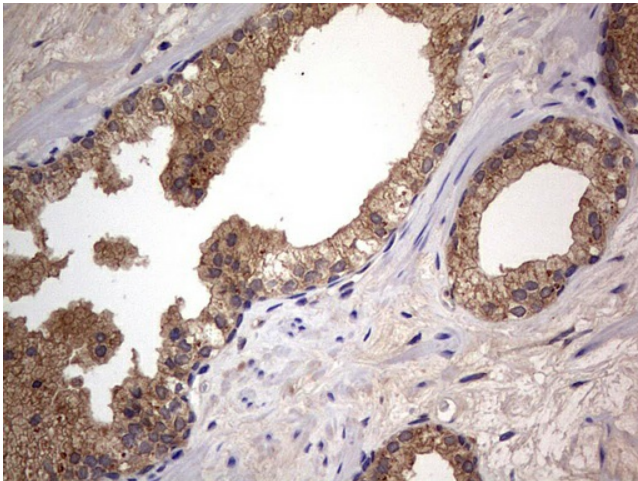
Immunohistochemical staining of paraffin-embedded Carcinoma of Human lung tissue using anti-ARAF mouse monoclonal antibody. (Heat-induced epitope retrieval by 1mM EDTA in 10mM Tris, pH8.5, 120°C for 3min, [TA803663])



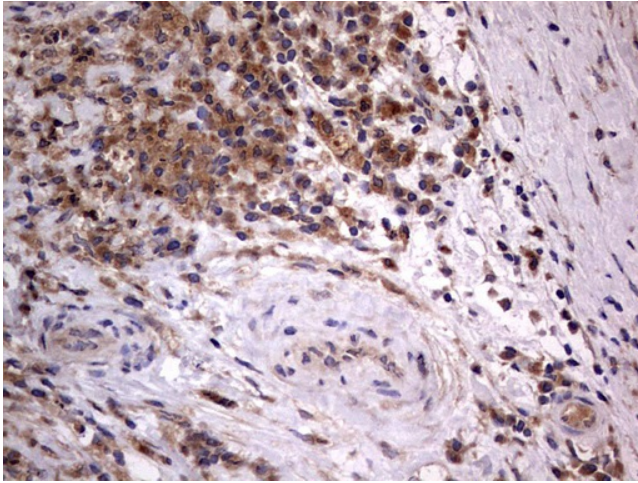
Immunohistochemical staining of paraffin-embedded Human pancreas tissue within the normal limits using anti-ARAF mouse monoclonal antibody. (Heat-induced epitope retrieval by 1mM EDTA in 10mM Tris, pH8.5, 120°C for 3min, [TA803663])



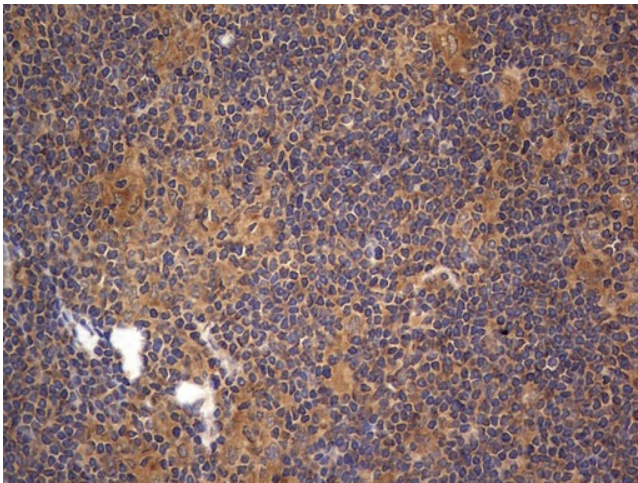
Immunohistochemical staining of paraffin-embedded Human prostate tissue within the normal limits using anti-ARAF mouse monoclonal antibody. (Heat-induced epitope retrieval by 1mM EDTA in 10mM Tris, pH8.5, 120°C for 3min, [TA803663])



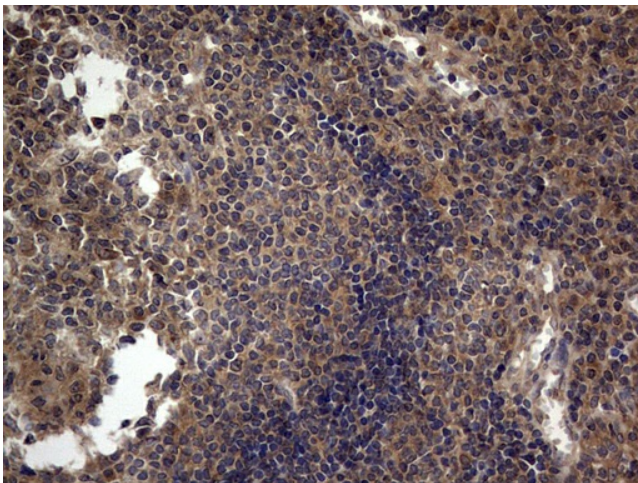
Immunohistochemical staining of paraffin-embedded Carcinoma of Human prostate tissue using anti-ARAF mouse monoclonal antibody. (Heat-induced epitope retrieval by 1mM EDTA in 10mM Tris, pH8.5, 120°C for 3min, [TA803663])



Immunohistochemical staining of paraffin-embedded Human lymph node tissue within the normal limits using anti-ARAF mouse monoclonal antibody. (Heat-induced epitope retrieval by 1mM EDTA in 10mM Tris, pH8.5, 120°C for 3min, [TA803663])



Immunohistochemical staining of paraffin-embedded Human lymphoma tissue using anti-ARAF mouse monoclonal antibody. (Heat-induced epitope retrieval by 1mM EDTA in 10mM Tris, pH8.5, 120°C for 3min, [TA803663])



Immunohistochemical staining of paraffin-embedded Human tonsil within the normal limits using anti-ARAF mouse monoclonal antibody. (Heat-induced epitope retrieval by 1mM EDTA in 10mM Tris, pH8.5, 120°C for 3min, [TA803663])