

Product datasheet for **TA803659S**

Acid sphingomyelinase (SMPD1) Mouse Monoclonal Antibody [Clone ID: OTI3H7]

Product data:

Product Type:	Primary Antibodies
Clone Name:	OTI3H7
Applications:	IHC, WB
Recommended Dilution:	WB 1:2000, IHC 1:150
Reactivity:	Human
Host:	Mouse
Isotype:	IgG1
Clonality:	Monoclonal
Immunogen:	Human recombinant protein fragment corresponding to amino acids 62-341 of human SMPD1 (NP_000534) produced in E.coli.
Formulation:	PBS (pH 7.3) containing 1% BSA, 50% glycerol and 0.02% sodium azide.
Concentration:	1 mg/ml
Purification:	Purified from mouse ascites fluids or tissue culture supernatant by affinity chromatography (protein A/G)
Conjugation:	Unconjugated
Storage:	Store at -20°C as received.
Stability:	Stable for 12 months from date of receipt.
Gene Name:	sphingomyelin phosphodiesterase 1
Database Link:	NP_000534 Entrez Gene 6609 Human P17405
Background:	The protein encoded by this gene is a lysosomal acid sphingomyelinase that converts sphingomyelin to ceramide. The encoded protein also has phospholipase C activity. Defects in this gene are a cause of Niemann-Pick disease type A (NPA) and Niemann-Pick disease type B (NPB). Multiple transcript variants encoding different isoforms have been identified. [provided by RefSeq, Jul 2010]
Synonyms:	ASM; ASMASE; NPD

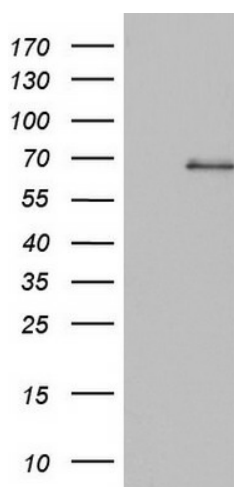


[View online »](#)

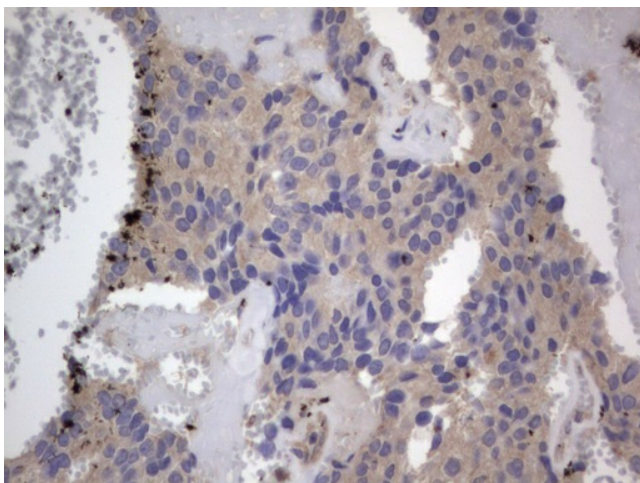
Protein Families: Druggable Genome, Transmembrane

Protein Pathways: Lysosome, Metabolic pathways, Sphingolipid metabolism

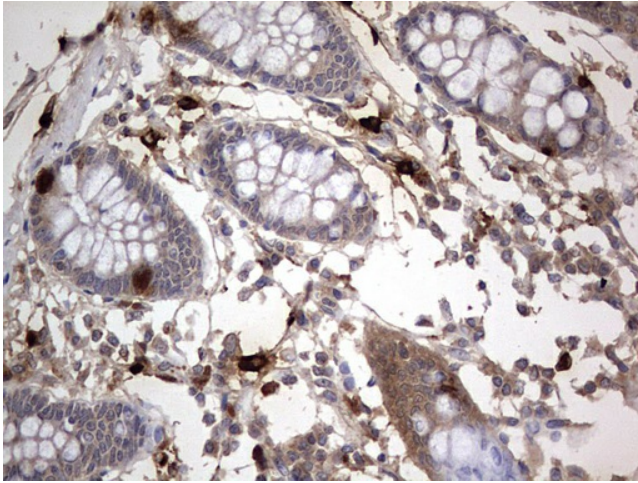
Product images:



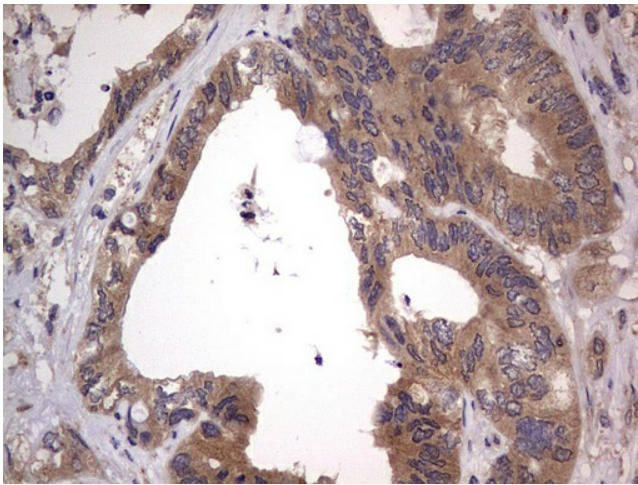
HEK293T cells were transfected with the pCMV6-ENTRY control (Cat# [PS100001], Left lane) or pCMV6-ENTRY SMPD1 (Cat# [RC219758], Right lane) cDNA for 48 hrs and lysed. Equivalent amounts of cell lysates (5 ug per lane) were separated by SDS-PAGE and immunoblotted with anti-SMPD1 (Cat# [TA803659]). Positive lysates [LY400191] (100ug) and [LC400191] (20ug) can be purchased separately from OriGene.



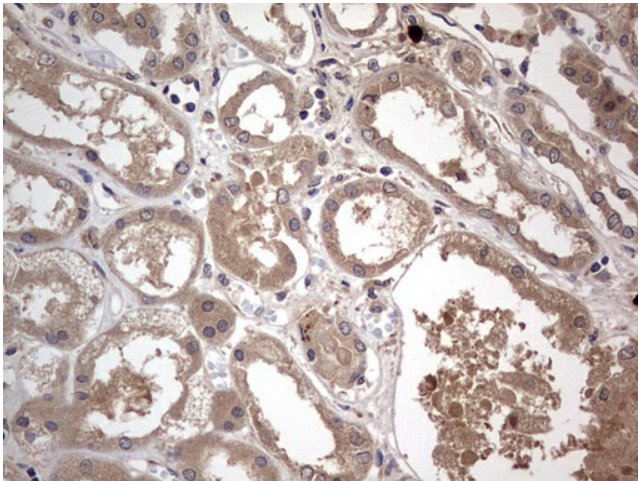
Immunohistochemical staining of paraffin-embedded Adenocarcinoma of Human breast tissue using anti-SMPD1 mouse monoclonal antibody. (Heat-induced epitope retrieval by 1mM EDTA in 10mM Tris, pH8.5, 120°C for 3min, [TA803659])



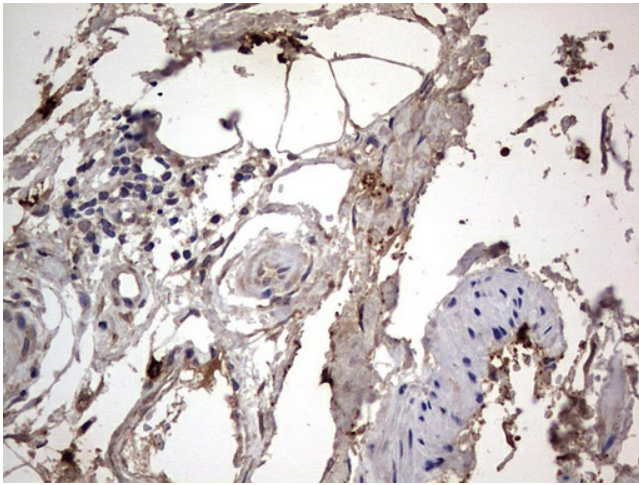
Immunohistochemical staining of paraffin-embedded Human colon tissue within the normal limits using anti-SMPD1 mouse monoclonal antibody. (Heat-induced epitope retrieval by 1mM EDTA in 10mM Tris, pH8.5, 120°C for 3min, [TA803659])



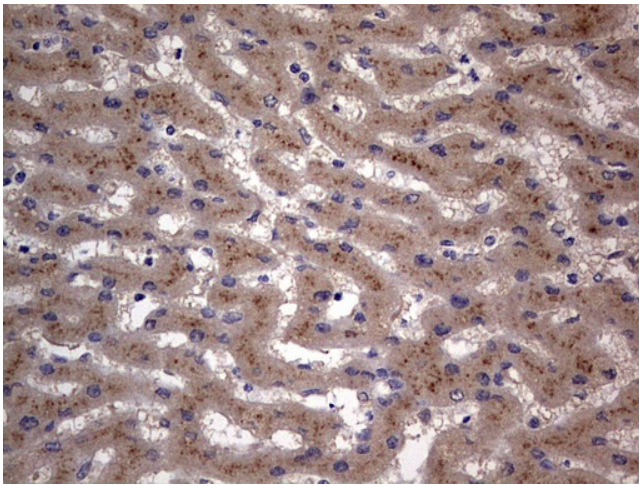
Immunohistochemical staining of paraffin-embedded Adenocarcinoma of Human colon tissue using anti-SMPD1 mouse monoclonal antibody. (Heat-induced epitope retrieval by 1mM EDTA in 10mM Tris, pH8.5, 120°C for 3min, [TA803659])



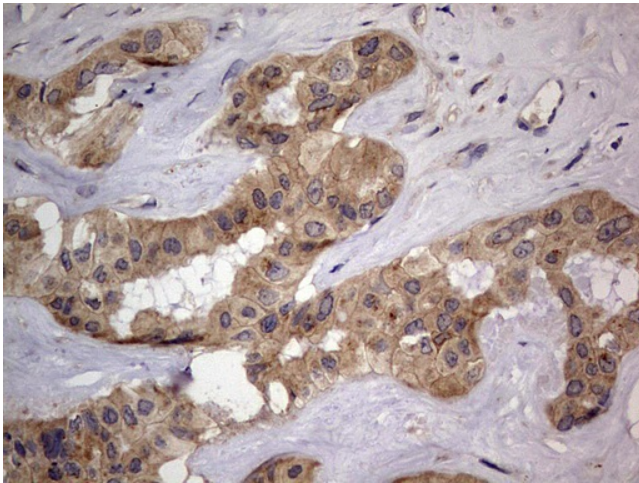
Immunohistochemical staining of paraffin-embedded Human Kidney tissue within the normal limits using anti-SMPD1 mouse monoclonal antibody. (Heat-induced epitope retrieval by 1mM EDTA in 10mM Tris, pH8.5, 120°C for 3min, [TA803659])



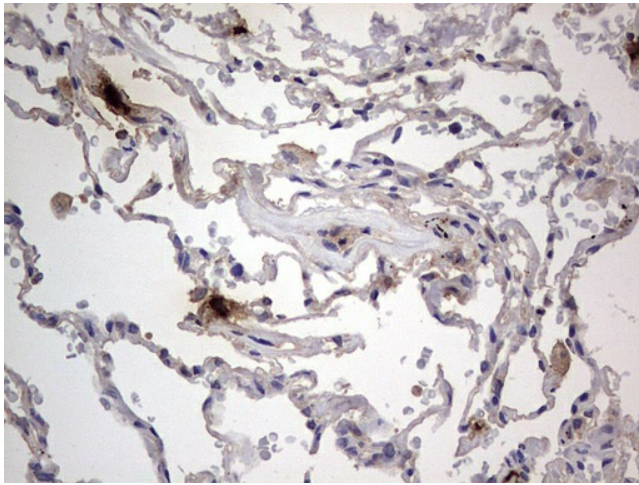
Immunohistochemical staining of paraffin-embedded Carcinoma of Human kidney tissue using anti-SMPD1 mouse monoclonal antibody. (Heat-induced epitope retrieval by 1mM EDTA in 10mM Tris, pH8.5, 120°C for 3min, [TA803659])



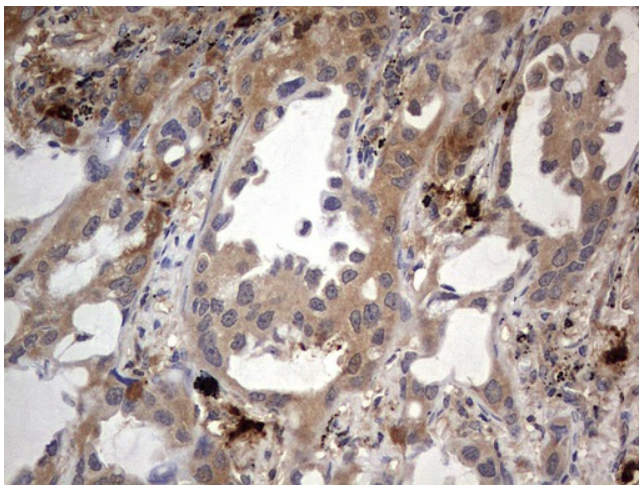
Immunohistochemical staining of paraffin-embedded Human liver tissue within the normal limits using anti-SMPD1 mouse monoclonal antibody. (Heat-induced epitope retrieval by 1mM EDTA in 10mM Tris, pH8.5, 120°C for 3min, [TA803659])



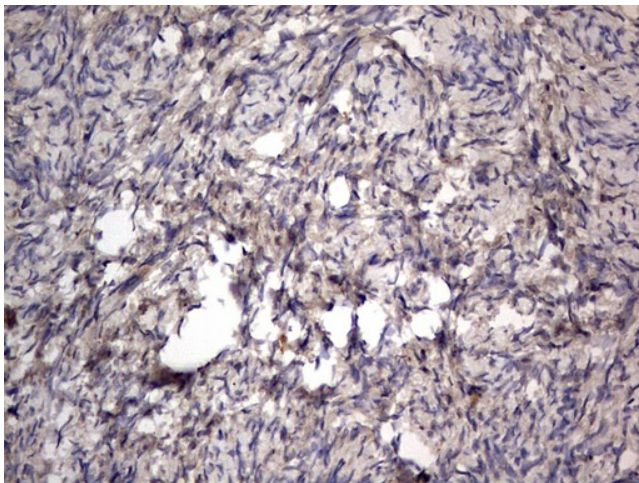
Immunohistochemical staining of paraffin-embedded Carcinoma of Human liver tissue using anti-SMPD1 mouse monoclonal antibody. (Heat-induced epitope retrieval by 1mM EDTA in 10mM Tris, pH8.5, 120°C for 3min, [TA803659])



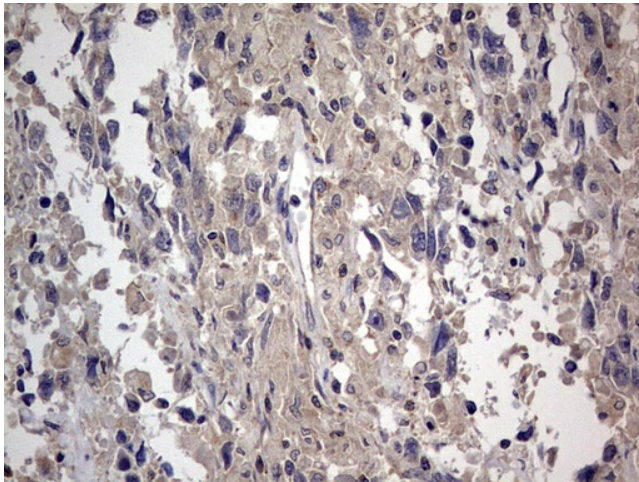
Immunohistochemical staining of paraffin-embedded Human lung tissue within the normal limits using anti-SMPD1 mouse monoclonal antibody. (Heat-induced epitope retrieval by 1mM EDTA in 10mM Tris, pH8.5, 120°C for 3min, [TA803659])



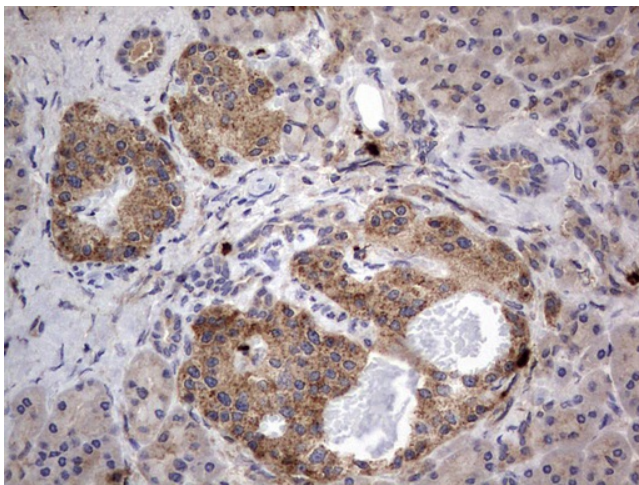
Immunohistochemical staining of paraffin-embedded Carcinoma of Human lung tissue using anti-SMPD1 mouse monoclonal antibody. (Heat-induced epitope retrieval by 1mM EDTA in 10mM Tris, pH8.5, 120°C for 3min, [TA803659])



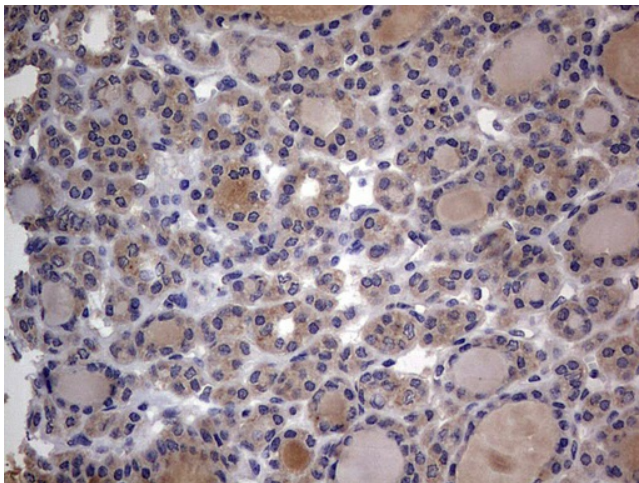
Immunohistochemical staining of paraffin-embedded Human Ovary tissue within the normal limits using anti-SMPD1 mouse monoclonal antibody. (Heat-induced epitope retrieval by 1mM EDTA in 10mM Tris, pH8.5, 120°C for 3min, [TA803659])



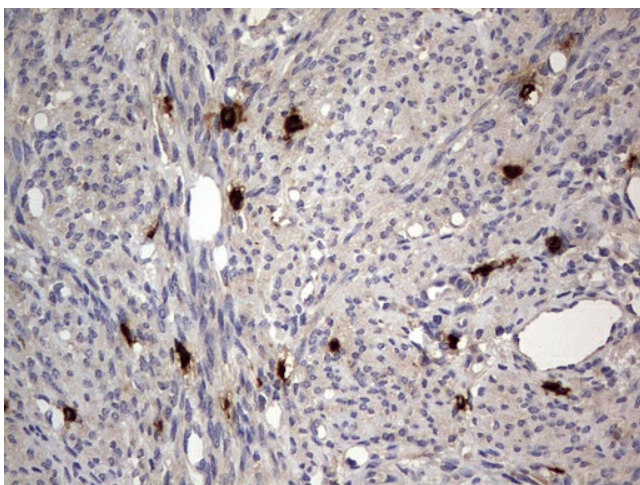
Immunohistochemical staining of paraffin-embedded Adenocarcinoma of Human ovary tissue using anti-SMPD1 mouse monoclonal antibody. (Heat-induced epitope retrieval by 1mM EDTA in 10mM Tris, pH8.5, 120°C for 3min, [TA803659])



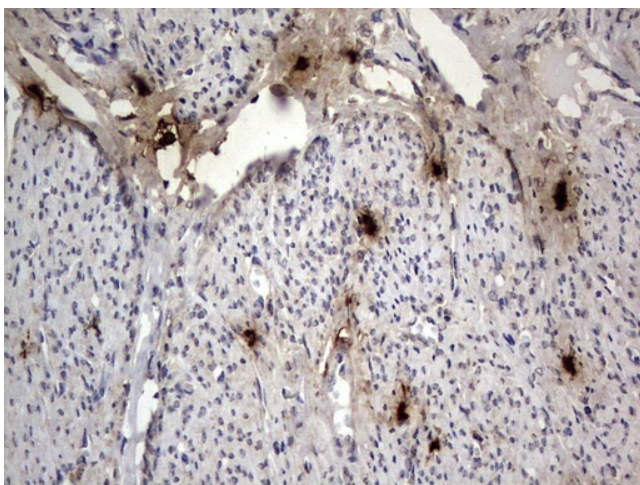
Immunohistochemical staining of paraffin-embedded Human pancreas tissue within the normal limits using anti-SMPD1 mouse monoclonal antibody. (Heat-induced epitope retrieval by 1mM EDTA in 10mM Tris, pH8.5, 120°C for 3min, [TA803659])



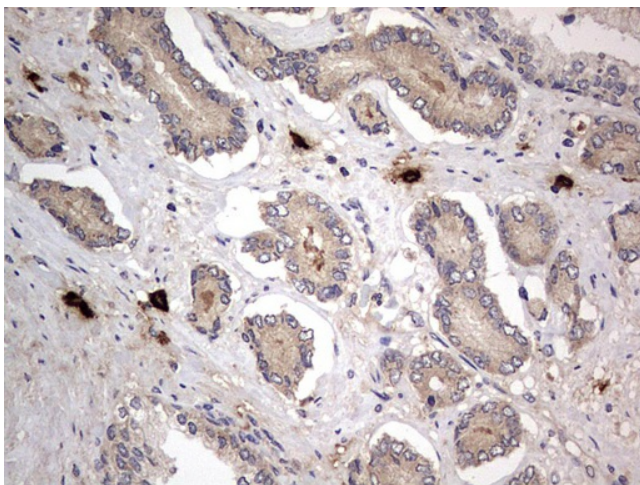
Immunohistochemical staining of paraffin-embedded Carcinoma of Human thyroid tissue using anti-SMPD1 mouse monoclonal antibody. (Heat-induced epitope retrieval by 1mM EDTA in 10mM Tris, pH8.5, 120°C for 3min, [TA803659])



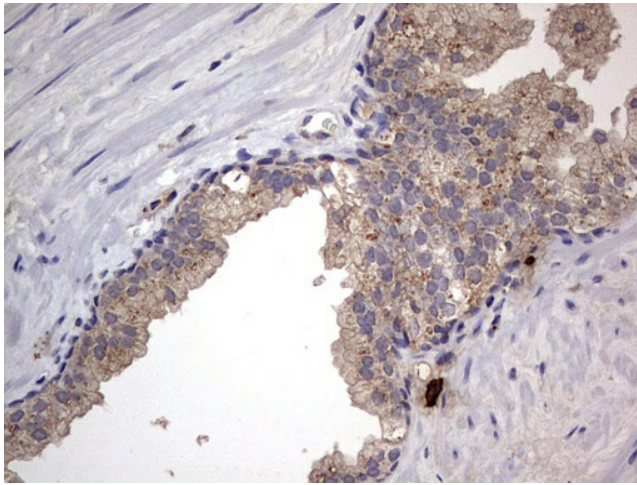
Immunohistochemical staining of paraffin-embedded Human endometrium tissue within the normal limits using anti-SMPD1 mouse monoclonal antibody. (Heat-induced epitope retrieval by 1mM EDTA in 10mM Tris, pH8.5, 120°C for 3min, [TA803659])



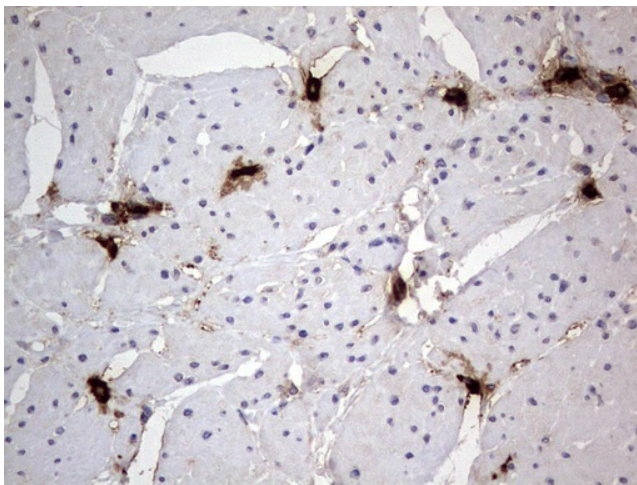
Immunohistochemical staining of paraffin-embedded Adenocarcinoma of Human endometrium tissue using anti-SMPD1 mouse monoclonal antibody. (Heat-induced epitope retrieval by 1mM EDTA in 10mM Tris, pH8.5, 120°C for 3min, [TA803659])



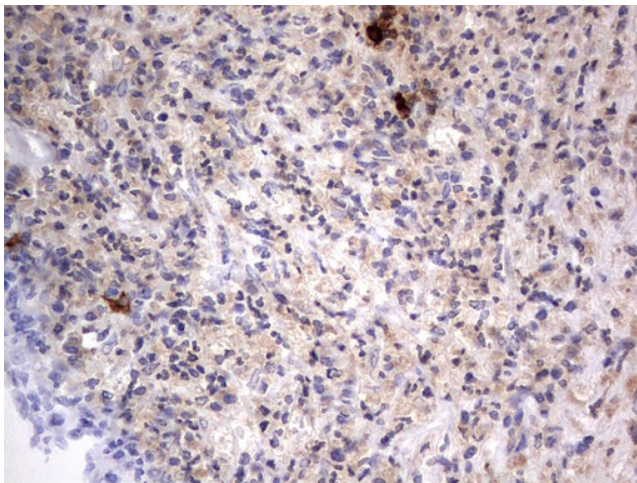
Immunohistochemical staining of paraffin-embedded Human prostate tissue within the normal limits using anti-SMPD1 mouse monoclonal antibody. (Heat-induced epitope retrieval by 1mM EDTA in 10mM Tris, pH8.5, 120°C for 3min, [TA803659])



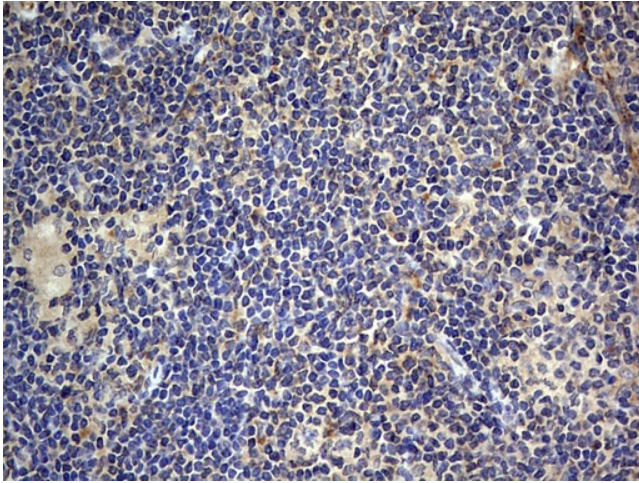
Immunohistochemical staining of paraffin-embedded Carcinoma of Human prostate tissue using anti-SMPD1 mouse monoclonal antibody. (Heat-induced epitope retrieval by 1mM EDTA in 10mM Tris, pH8.5, 120°C for 3min, [TA803659])



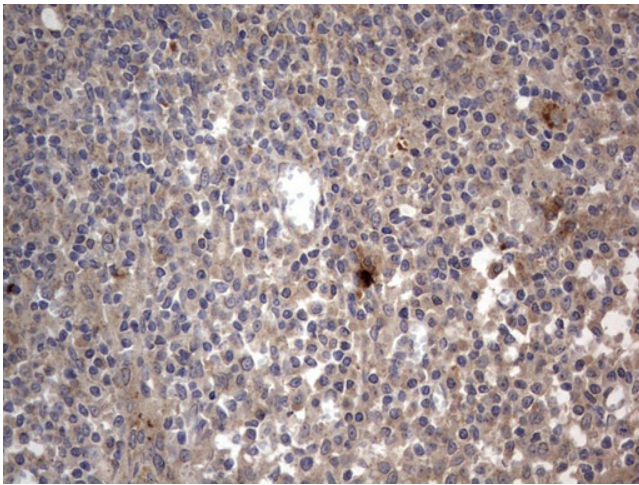
Immunohistochemical staining of paraffin-embedded Human bladder tissue within the normal limits using anti-SMPD1 mouse monoclonal antibody. (Heat-induced epitope retrieval by 1mM EDTA in 10mM Tris, pH8.5, 120°C for 3min, [TA803659])



Immunohistochemical staining of paraffin-embedded Human lymph node tissue within the normal limits using anti-SMPD1 mouse monoclonal antibody. (Heat-induced epitope retrieval by 1mM EDTA in 10mM Tris, pH8.5, 120°C for 3min, [TA803659])



Immunohistochemical staining of paraffin-embedded Human lymphoma tissue using anti-SMPD1 mouse monoclonal antibody. (Heat-induced epitope retrieval by 1mM EDTA in 10mM Tris, pH8.5, 120°C for 3min, [TA803659])



Immunohistochemical staining of paraffin-embedded Human tonsil within the normal limits using anti-SMPD1 mouse monoclonal antibody. (Heat-induced epitope retrieval by 1mM EDTA in 10mM Tris, pH8.5, 120°C for 3min, [TA803659])