

## Product datasheet for **TA803377BM**

### GBA Mouse Monoclonal Antibody (HRP conjugated) [Clone ID: OTI4G4]

#### Product data:

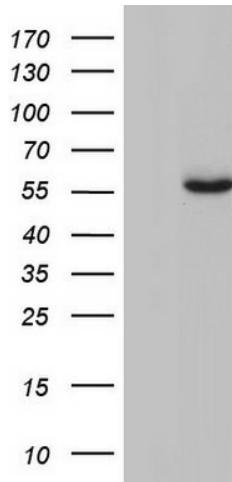
Product Type:	Primary Antibodies
Clone Name:	OTI4G4
Applications:	IHC, WB
Recommended Dilution:	WB 1:500, IHC 1:150
Reactivity:	Human, Mouse, Rat
Host:	Mouse
Isotype:	IgG2a
Clonality:	Monoclonal
Immunogen:	Human recombinant protein fragment corresponding to amino acids 40-315 of human GBA (NP_000148) produced in E.coli.
Formulation:	PBS (pH 7.3) containing 1% BSA, 50% glycerol.
Concentration:	0.5 mg/ml
Purification:	Purified from mouse ascites fluids or tissue culture supernatant by affinity chromatography (protein A/G)
Conjugation:	HRP
Storage:	Store at -20°C as received.
Stability:	Stable for 12 months from date of receipt.
Predicted Protein Size:	55.5 kDa
Gene Name:	glucosylceramidase beta
Database Link:	<a href="#">NP_000148</a> <a href="#">Entrez Gene 14466 Mouse</a> <a href="#">Entrez Gene 2629 Human</a> <a href="#">P04062</a>
Background:	This gene encodes a lysosomal membrane protein that cleaves the beta-glucosidic linkage of glycosylceramide, an intermediate in glycolipid metabolism. Mutations in this gene cause Gaucher disease, a lysosomal storage disease characterized by an accumulation of glucocerebrosides. A related pseudogene is approximately 12 kb downstream of this gene on chromosome 1. Alternative splicing results in multiple transcript variants. [provided by RefSeq, Jan 2010]



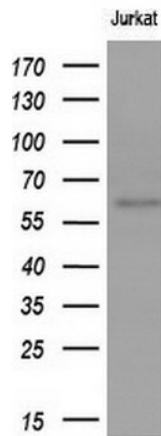
[View online »](#)

**Synonyms:** GBA1; GCB; GLUC  
**Protein Families:** Druggable Genome  
**Protein Pathways:** Lysosome, Metabolic pathways, Other glycan degradation, Sphingolipid metabolism

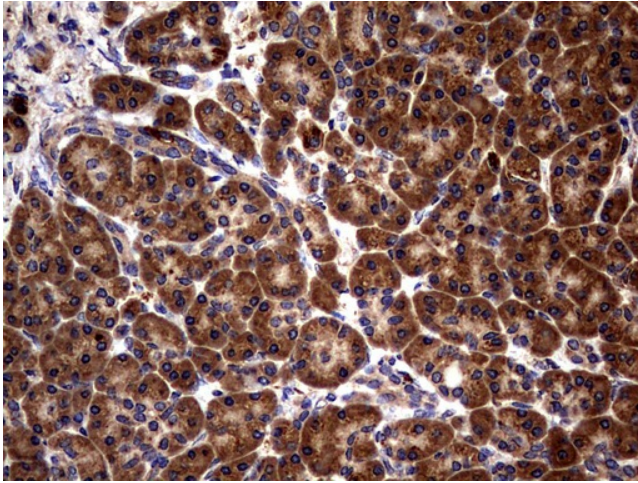
**Product images:**



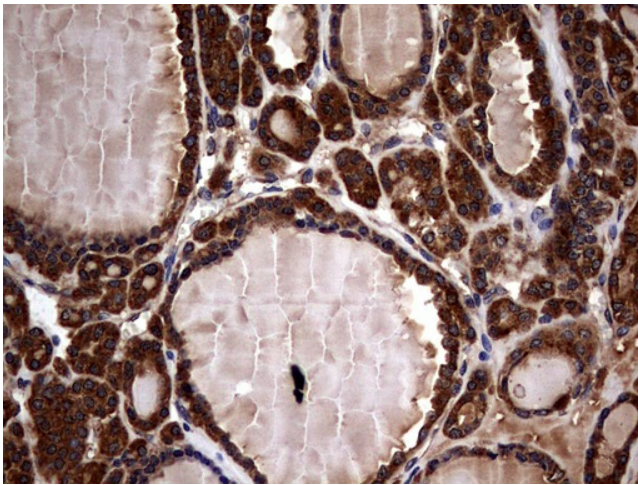
HEK293T cells were transfected with the pCMV6-ENTRY control (Cat# [PS100001], Left lane) or pCMV6-ENTRY GBA (Cat# [RC216061], Right lane) cDNA for 48 hrs and lysed. Equivalent amounts of cell lysates (5 ug per lane) were separated by SDS-PAGE and immunoblotted with anti-GBA (Cat# [TA803377]). Positive lysates [LY400055] (100ug) and [LC400055] (20ug) can be purchased separately from OriGene.



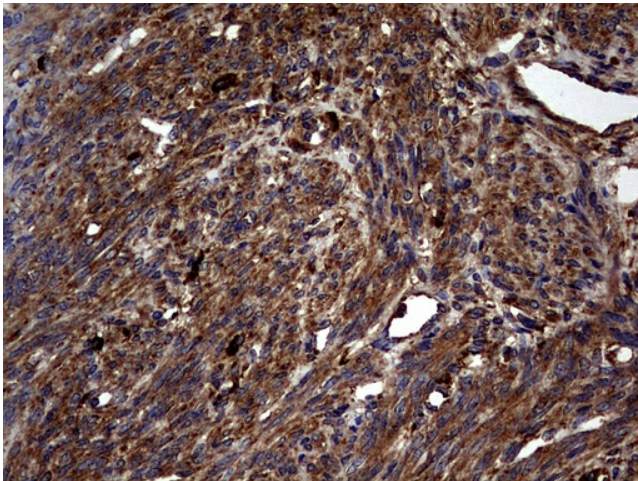
Western blot analysis of extracts (10ug) from 1 cell line by using anti-GBA monoclonal antibody (1:200).



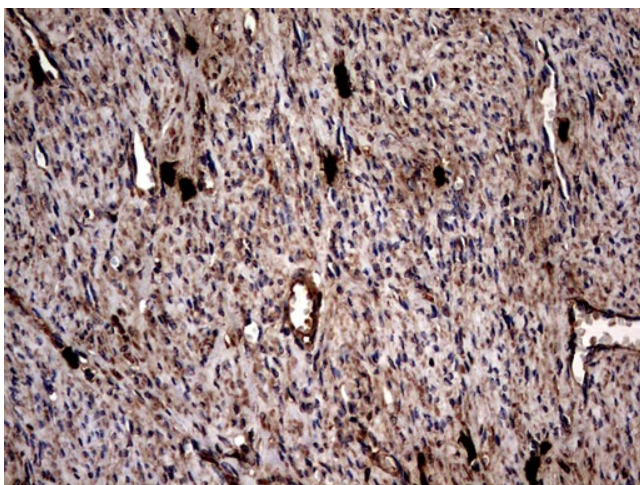
Immunohistochemical staining of paraffin-embedded Human pancreas tissue within the normal limits using anti-GBA mouse monoclonal antibody. (Heat-induced epitope retrieval by 1mM EDTA in 10mM Tris, pH8.5, 120°C for 3min, [TA803377])



Immunohistochemical staining of paraffin-embedded Carcinoma of Human thyroid tissue using anti-GBA mouse monoclonal antibody. (Heat-induced epitope retrieval by 1mM EDTA in 10mM Tris, pH8.5, 120°C for 3min, [TA803377])



Immunohistochemical staining of paraffin-embedded Human endometrium tissue within the normal limits using anti-GBA mouse monoclonal antibody. (Heat-induced epitope retrieval by 1mM EDTA in 10mM Tris, pH8.5, 120°C for 3min, [TA803377])



Immunohistochemical staining of paraffin-embedded Adenocarcinoma of Human endometrium tissue using anti-GBA mouse monoclonal antibody. (Heat-induced epitope retrieval by 1mM EDTA in 10mM Tris, pH8.5, 120°C for 3min, [TA803377])